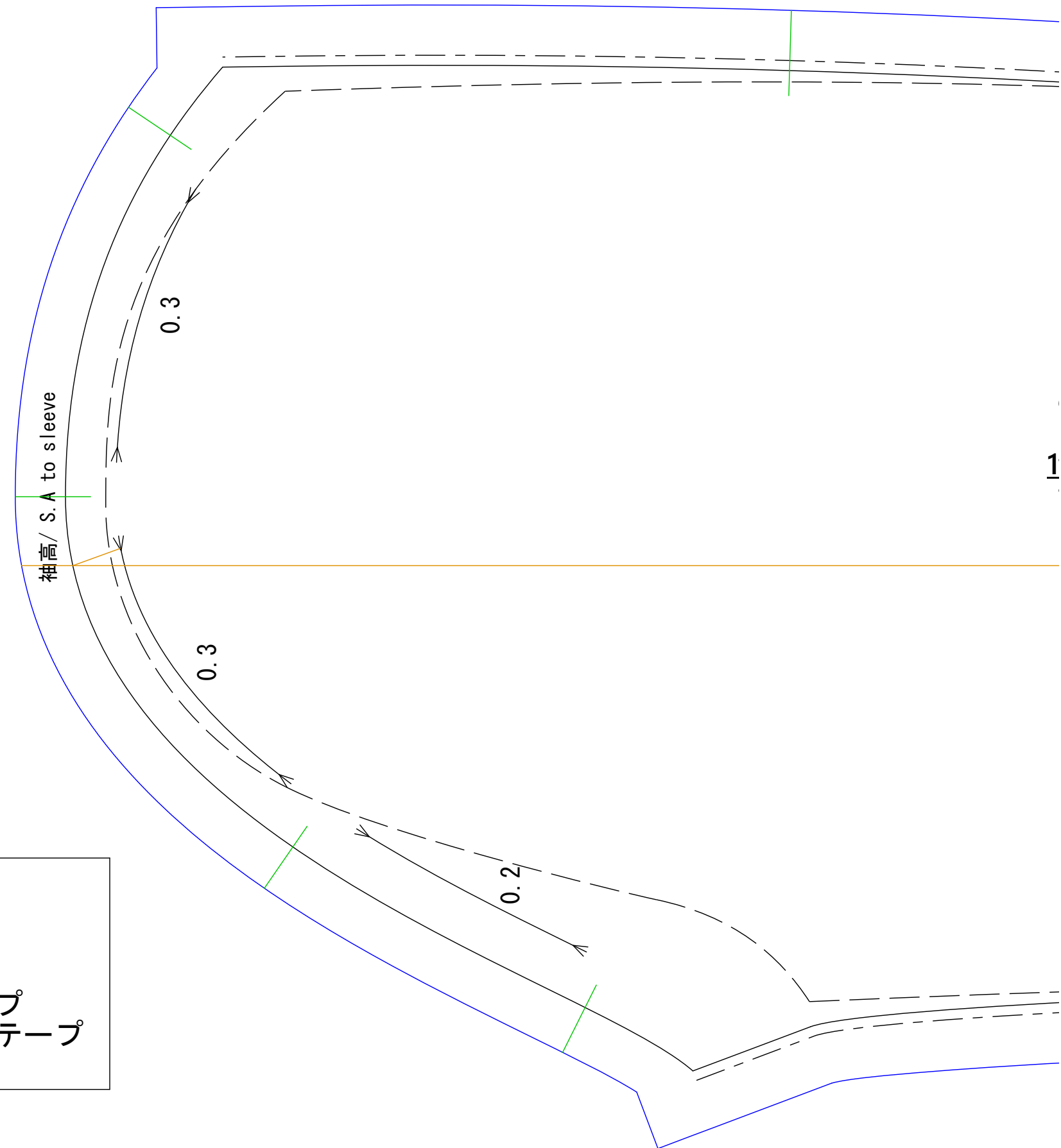
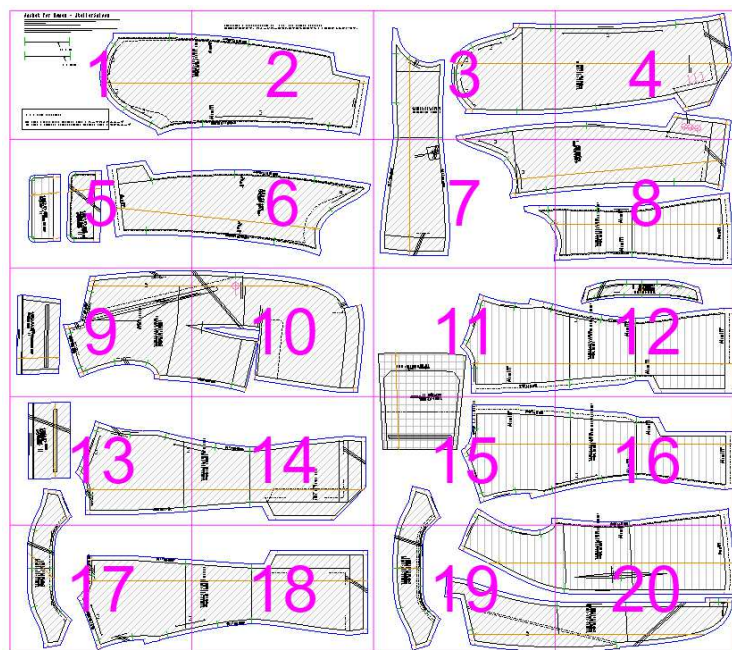
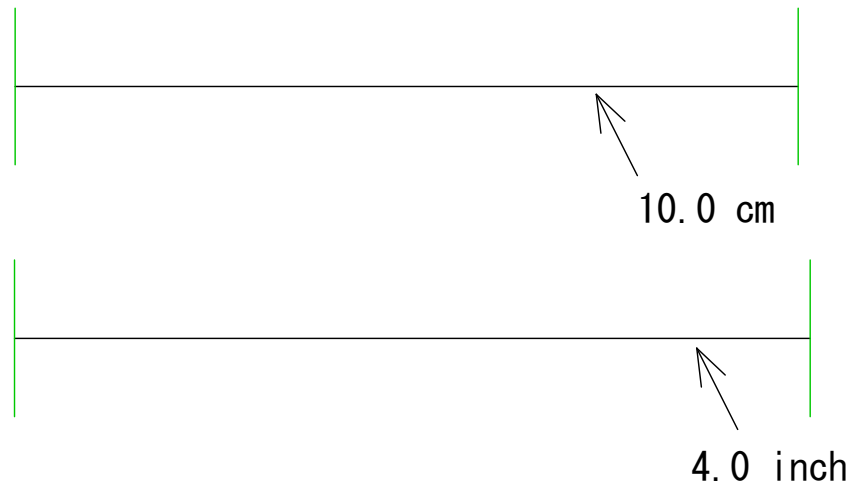


Jacket for Women – AtelierSaison

Be sure to print with "A3 size" and "Page Sizing & Handling – Custom Scale: 96.5%" of Adobe Acrobat Reader.
Please check if it is correctly printed in actual size by measuring the straight line below with a ruler.

*There may be an error of 0.1 to 0.2 mm depending on the scale.

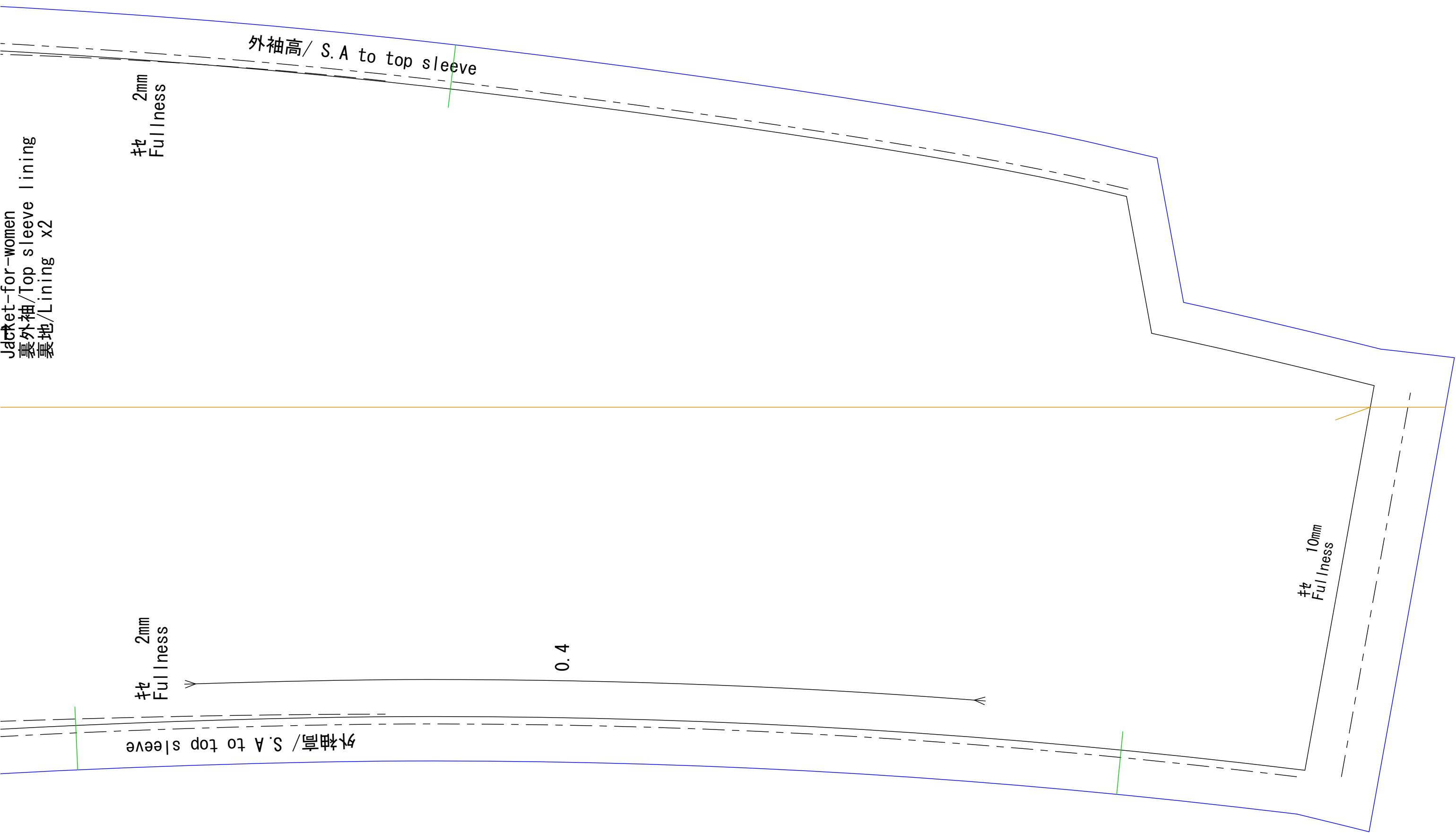
必ずAdobe Acrobat Readerの「A3サイズ」、「ページサイズ処理—カスタム倍率：96.5%」で印刷してください。
正しく実寸で印刷されているかどうかを下の直線を定規で図って確認してください。
※縮尺により0.1~0.2mm程度誤差が生じる事があります。



S. A = Seam Allowance

HB tape = Half bias fusible tape = ハーフバイアステープ
AR tape = Armhole reinforcement fusible tape = 端打ちテープ

Copyright © AtelierSaison Co., Ltd. All rights reserved.
無断転載禁止です。パターンの一部または全部を複製することは禁止されています。



Jacket-for-women
裏外袖/Top sleeve lining
裏地/Lining x2

2mm
Fullness

外袖高 / S. A to top sleeve

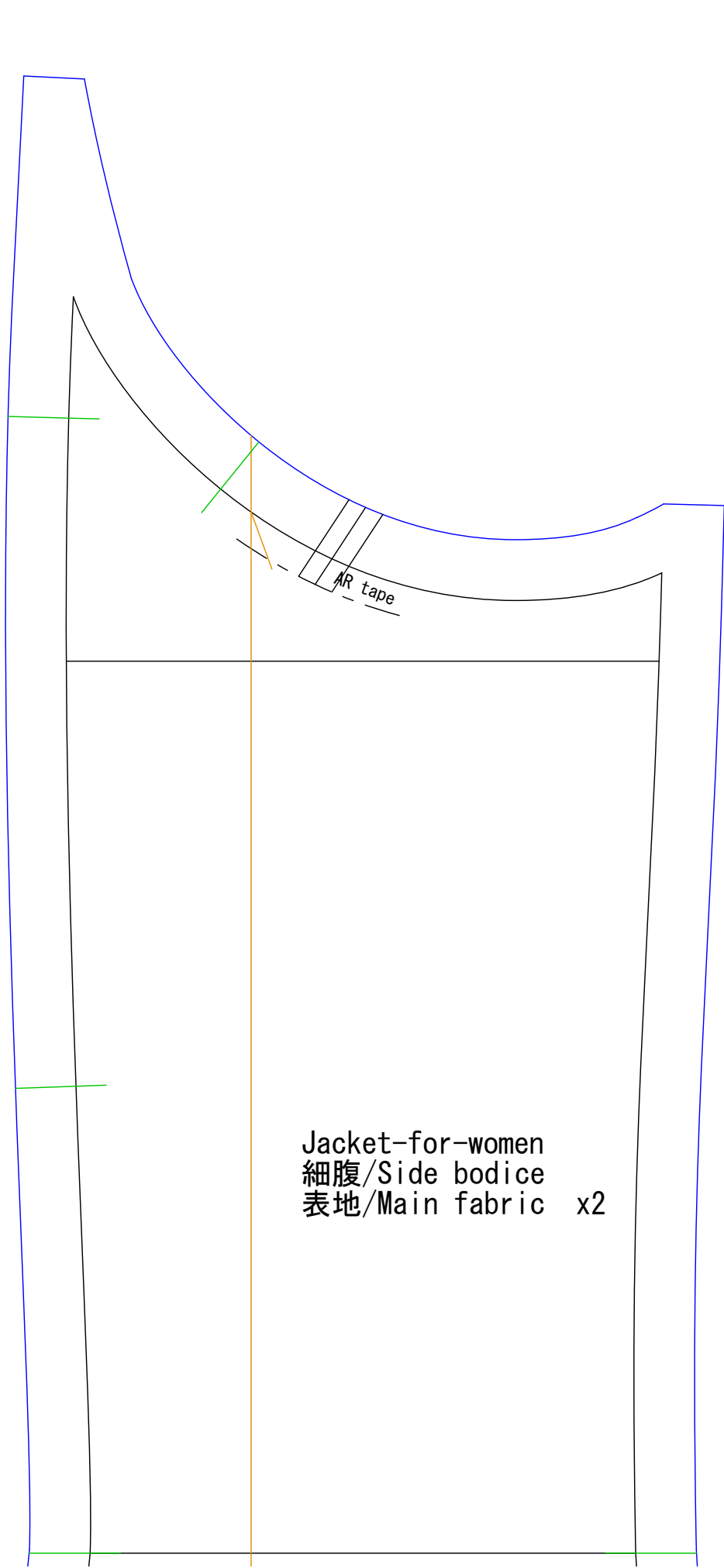
2mm
Fullness

0.4

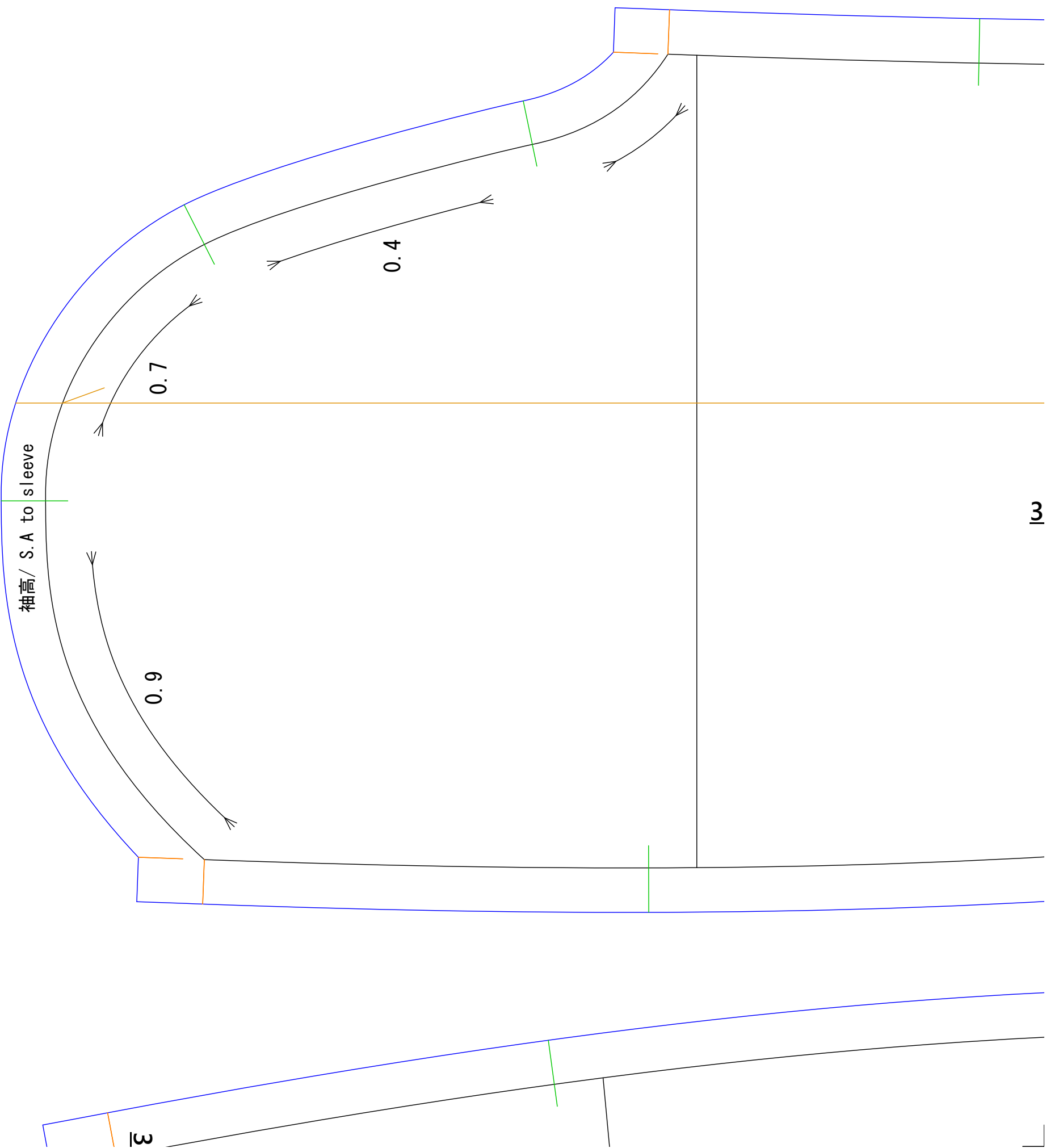
外袖高 / S. A to top sleeve

10mm
Fullness

2



Jacket-for-women
 細腹/Side bodice
 表地/Main fabric x2



袖高 / S. A to sleeve

3

3

3

Jacket-for-women
外袖/Top sleeve
表地/Main fabric x2

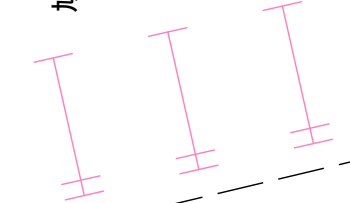
割り / Seam opening

0.5

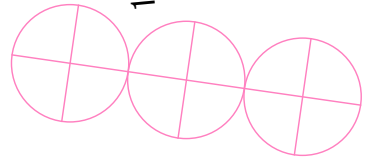
割り / Seam opening

割り / Seam opening

鳩目穴 / Button hole
18mm

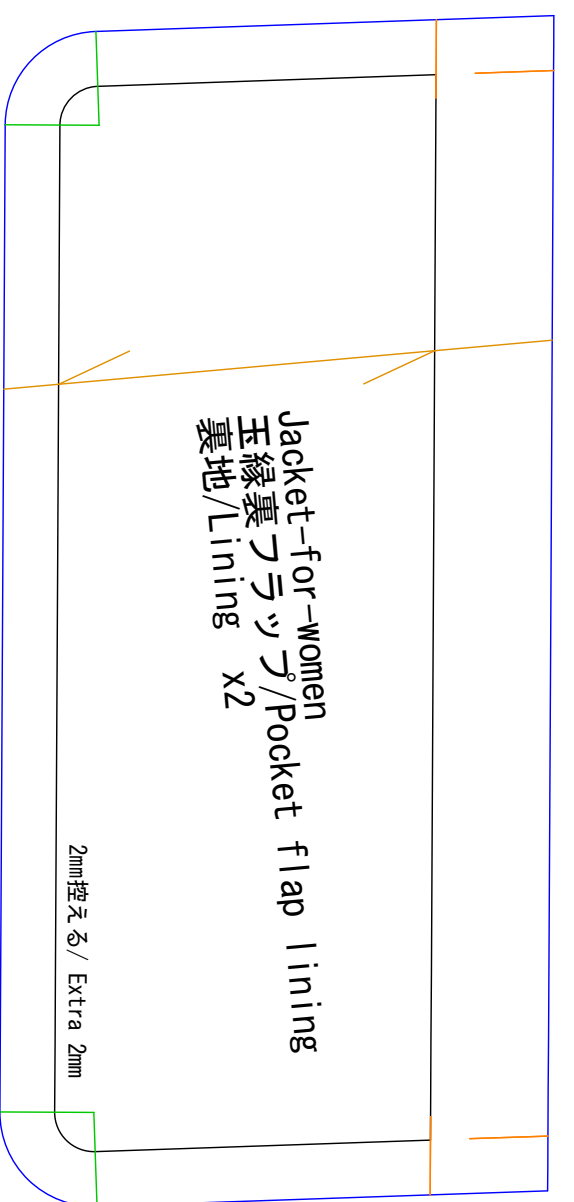
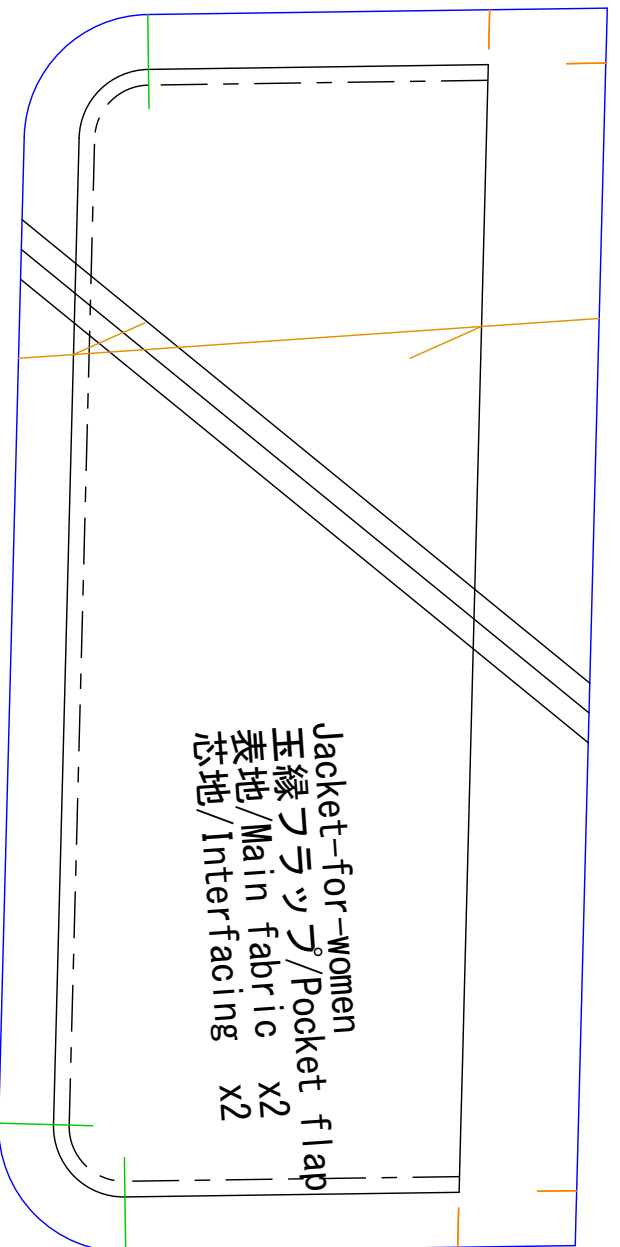
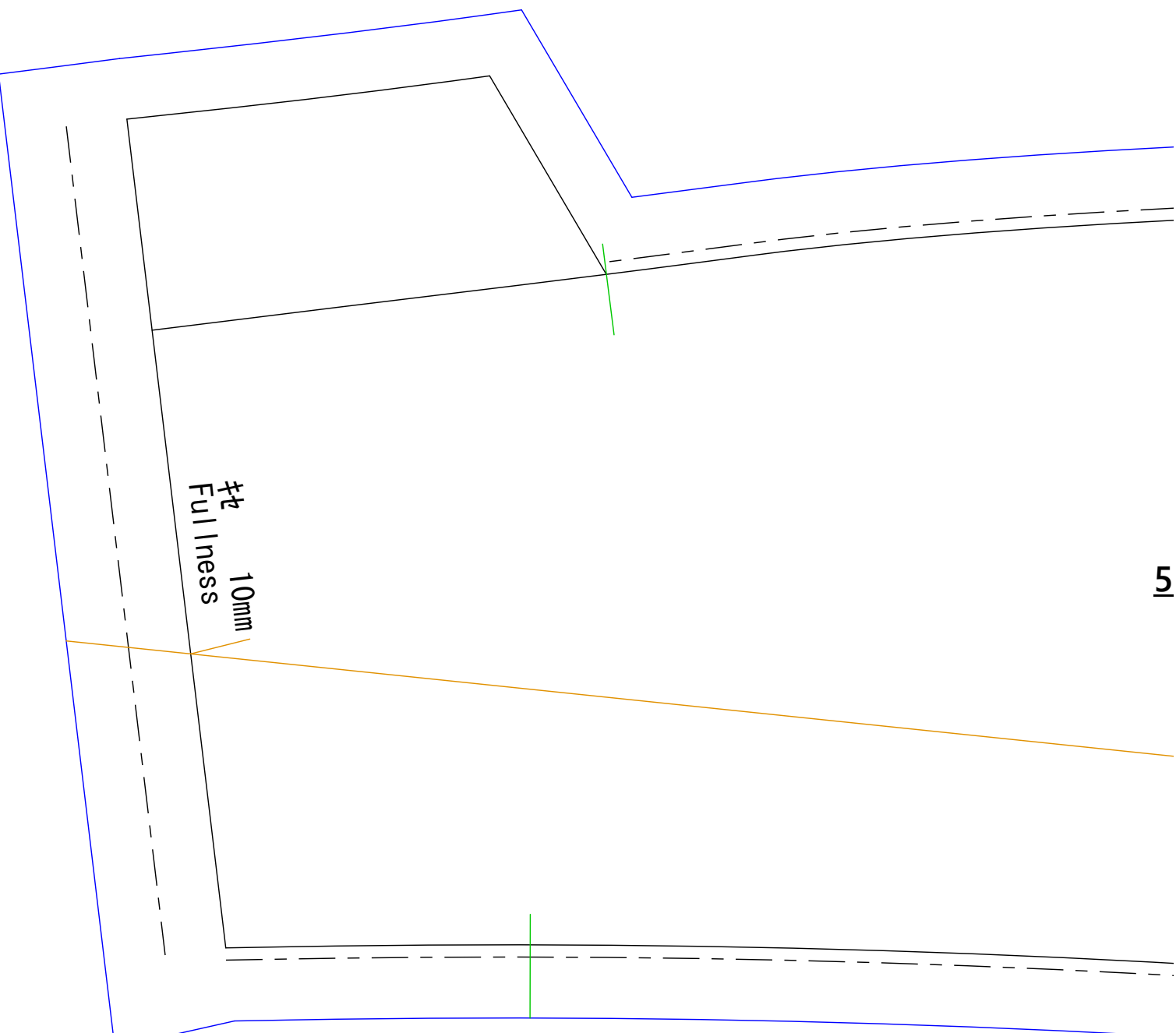


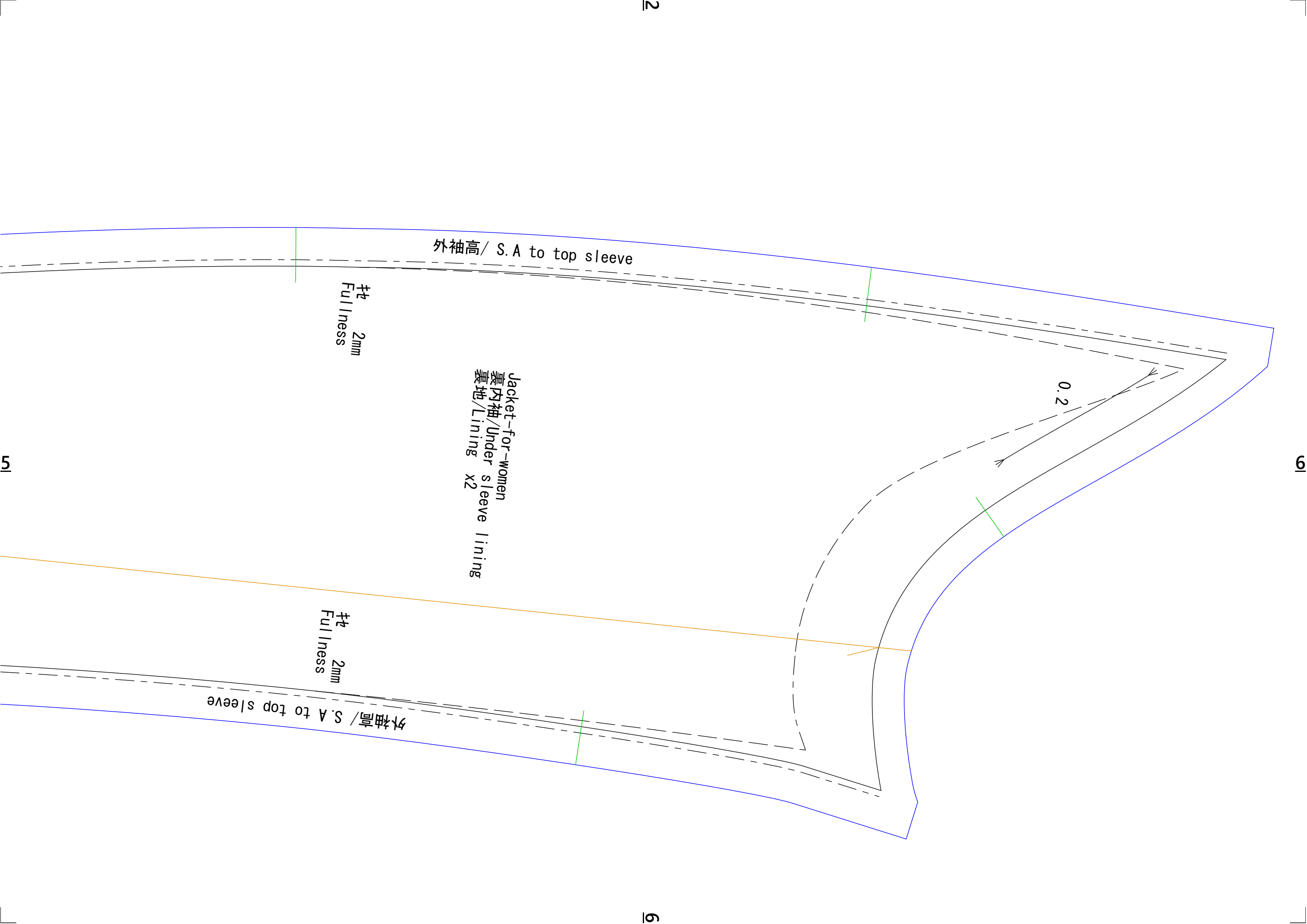
釦 / button
15mm



縫線始末 / Mitered Corner

4





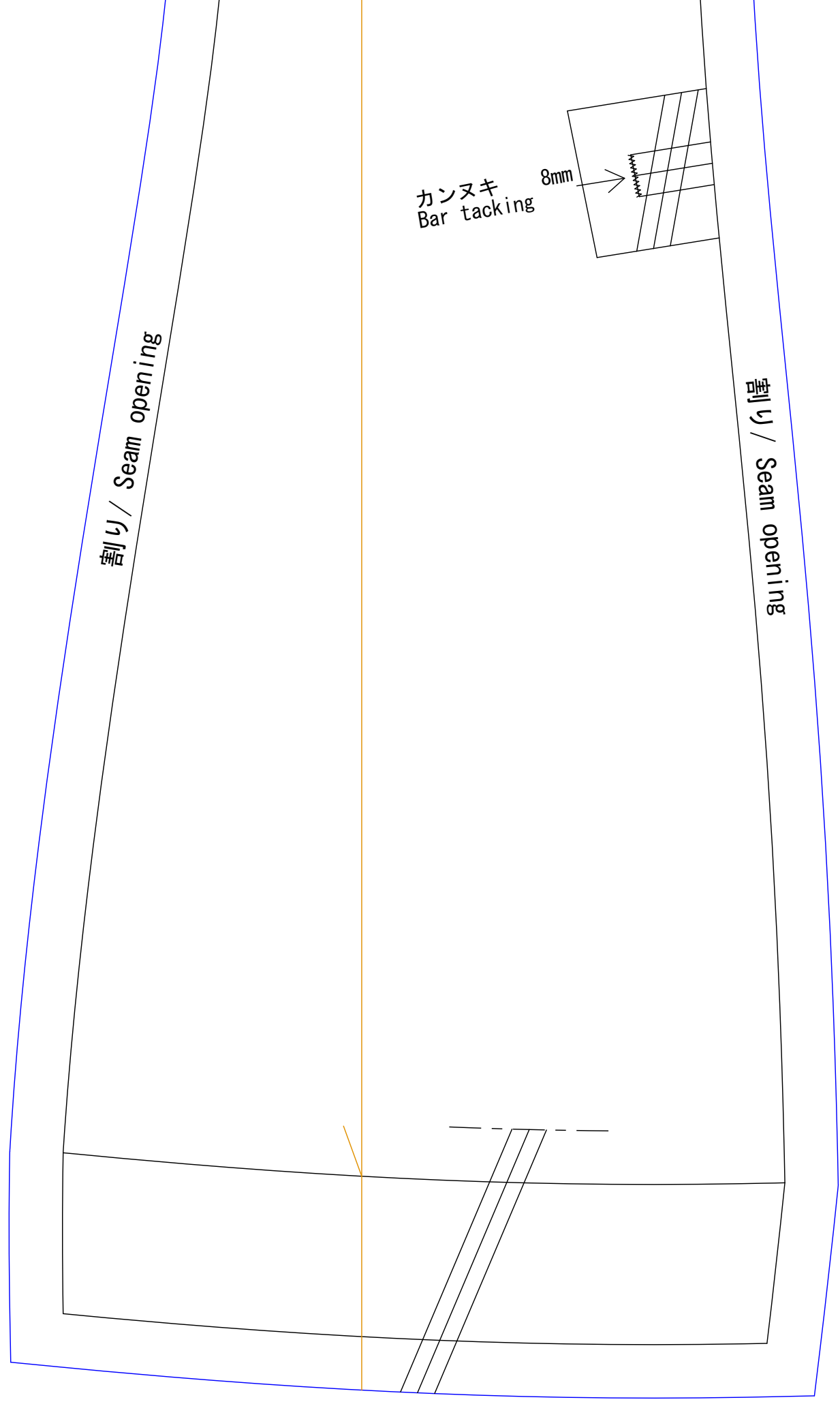
2

9

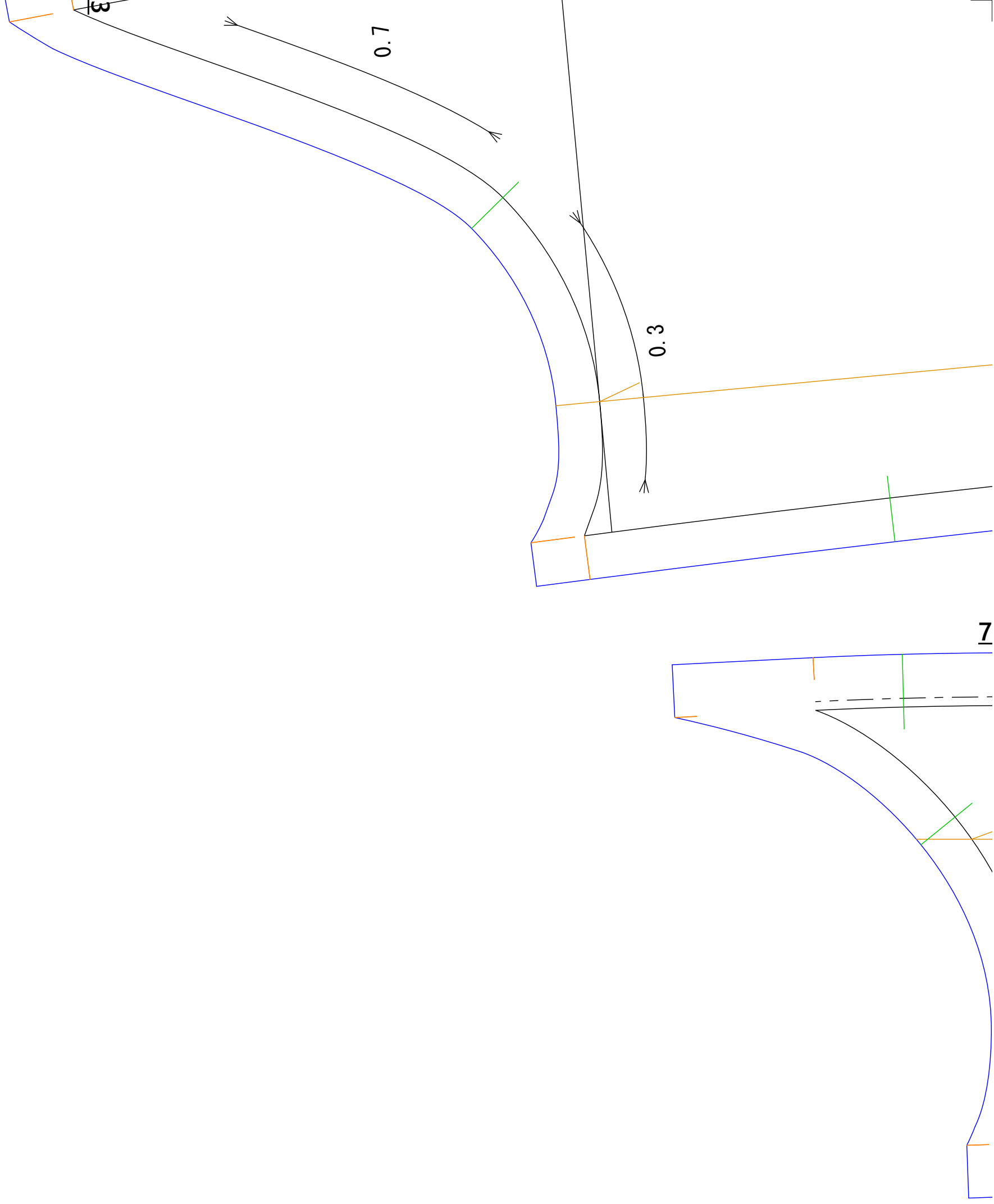
5

6

6



7



Jacket-for-women
内袖/Under sleeve x2
表地/Main fabric x2

割り / Seam opening

7

後高 / S.A to back

Jacket-for-women
裏身頃/Side bodice lining
裏地/Lining x2

前高 / S.A to front

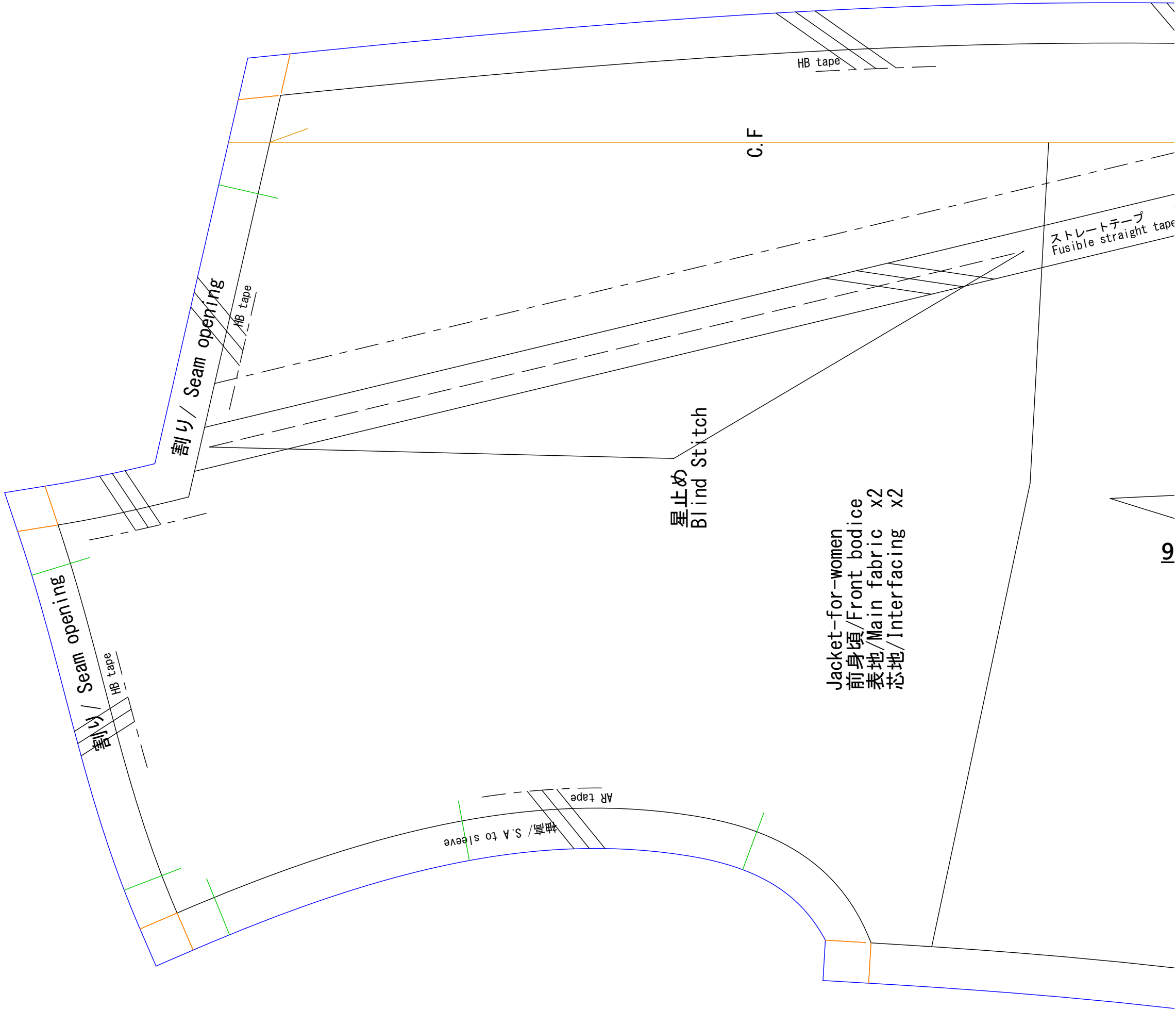
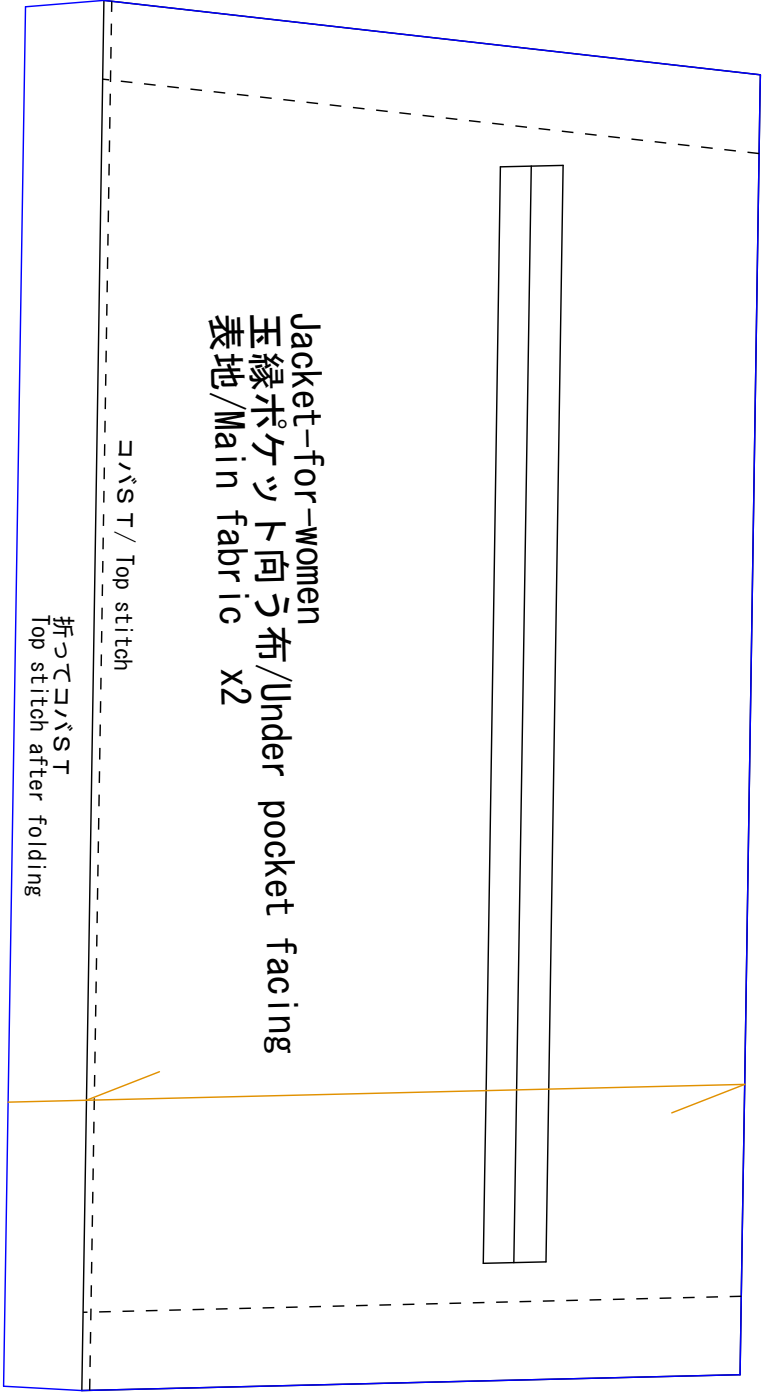
拵 2mm
Fullness

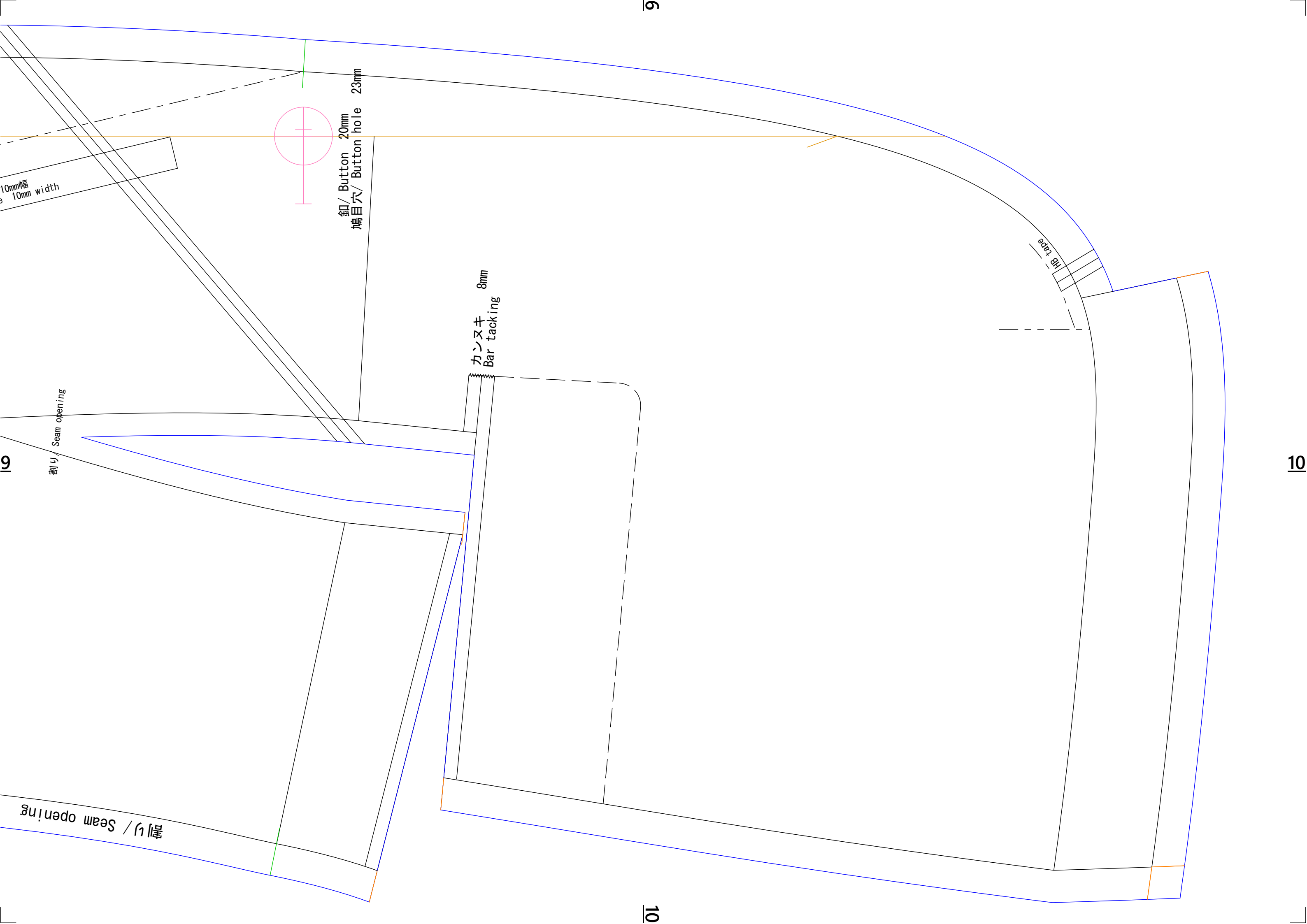
拵 2mm
Fullness

拵 10mm
Fullness

8

4



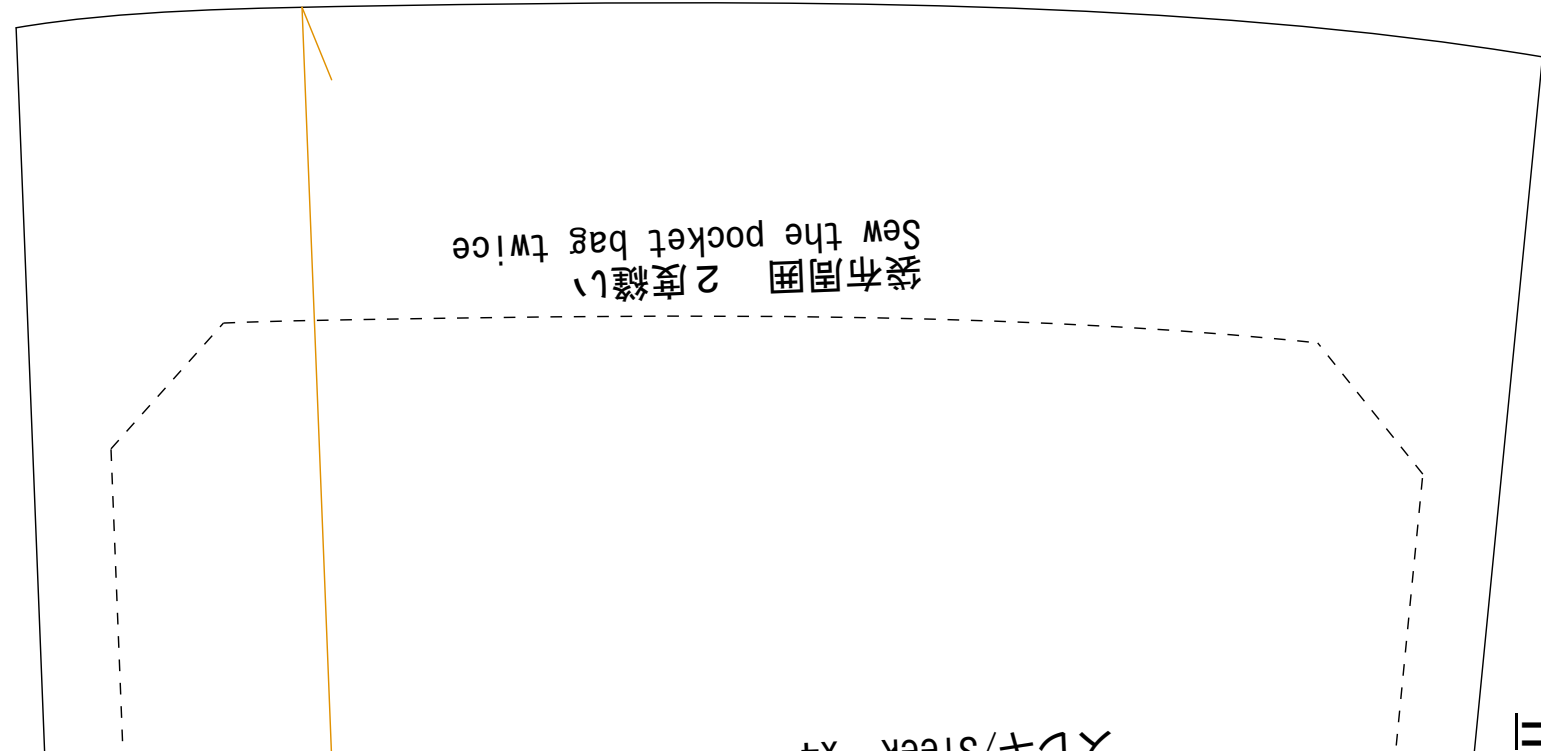


9

10

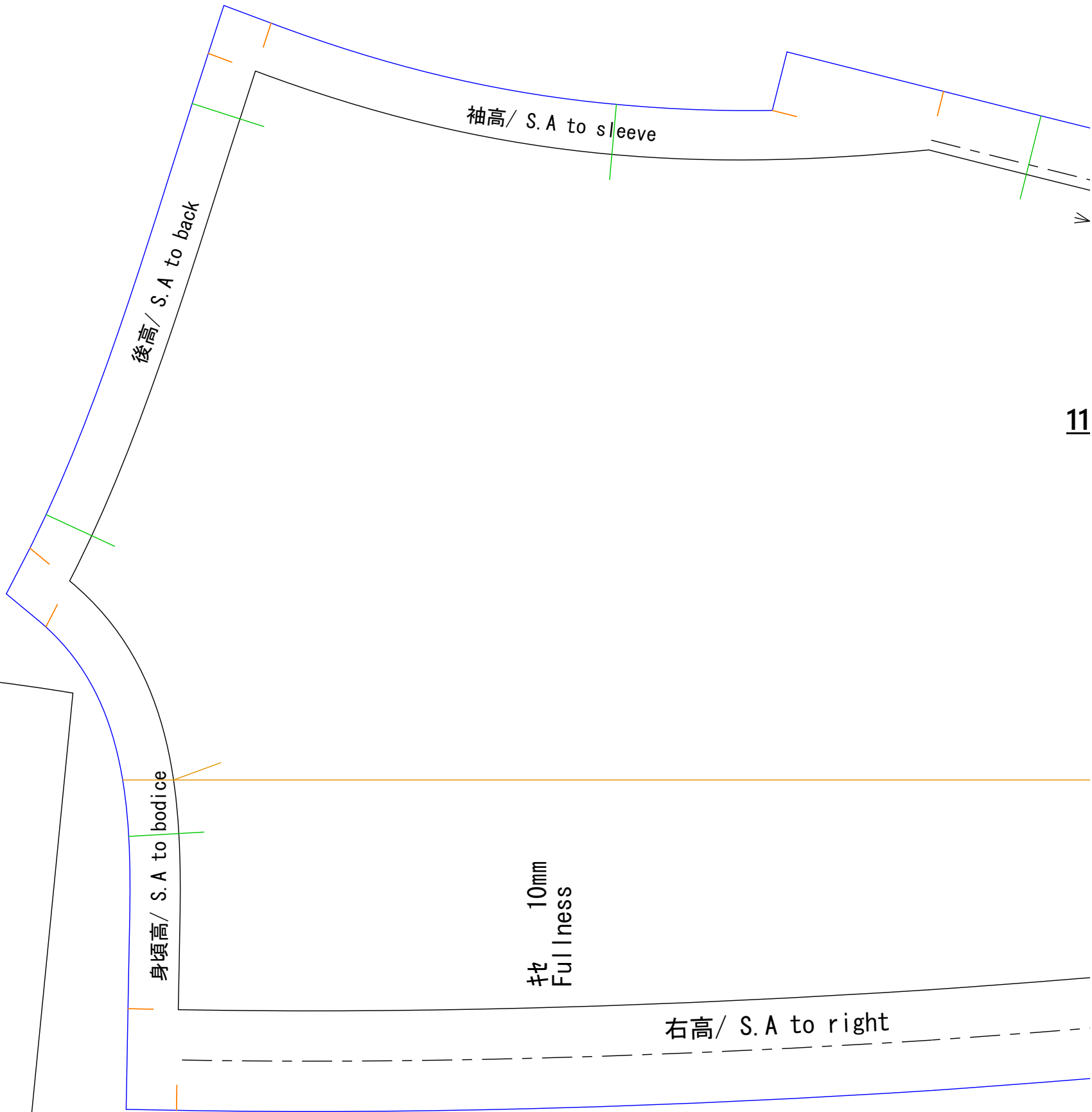
10

10



袋布周囲 2度縫い
Sew the pocket bag twice

11



後高 / S.A to back

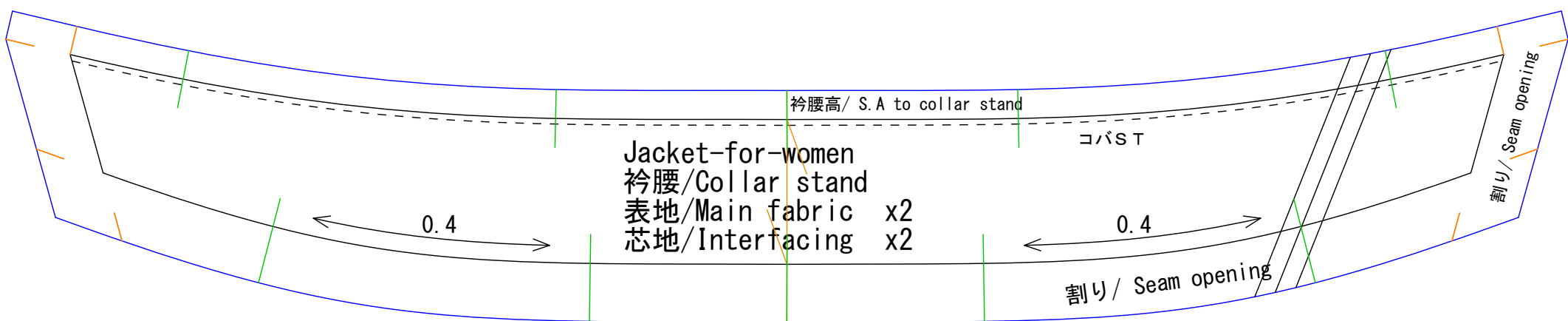
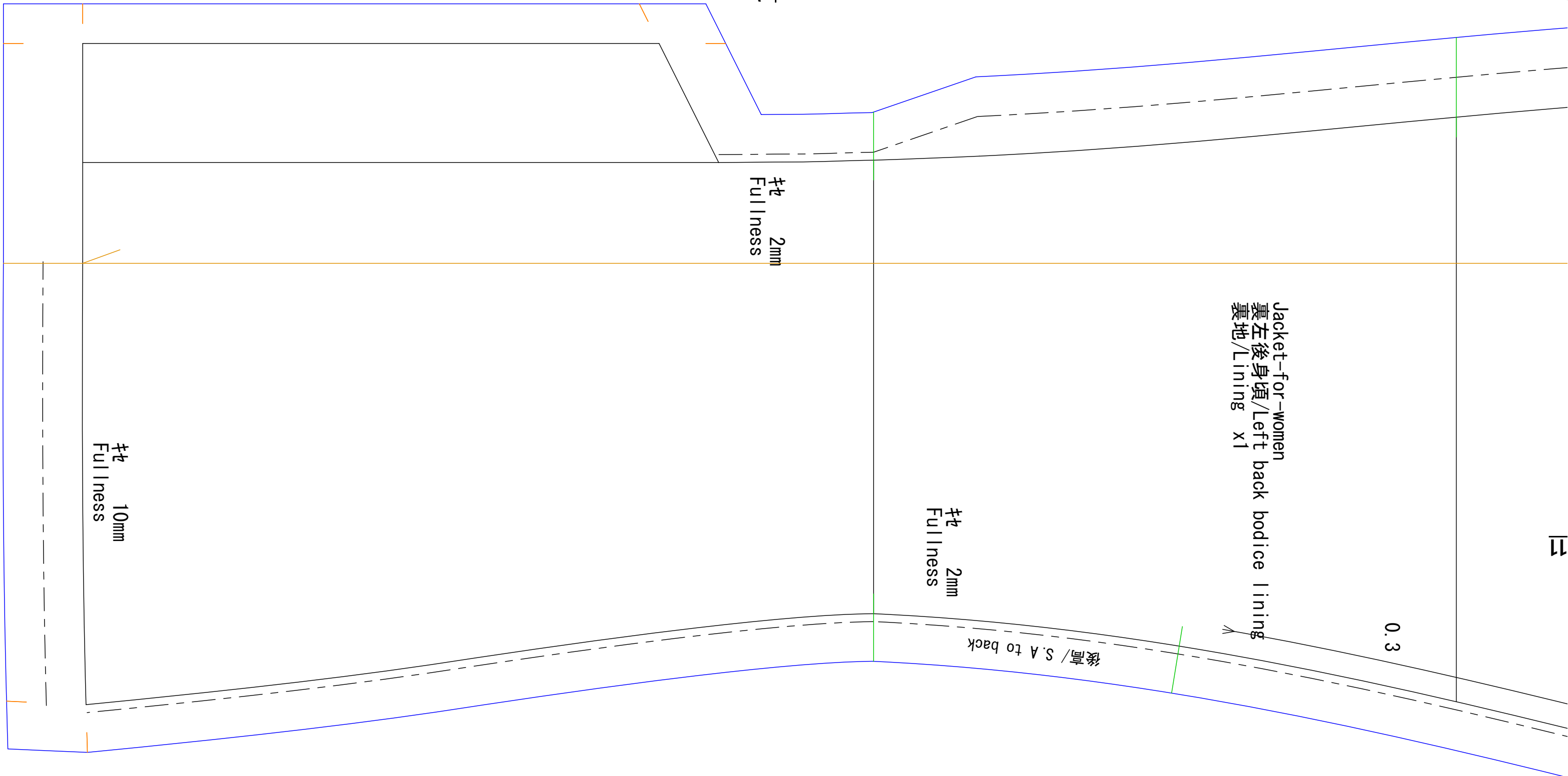
袖高 / S.A to sleeve

身頃高 / S.A to bodice

10mm
Fullness

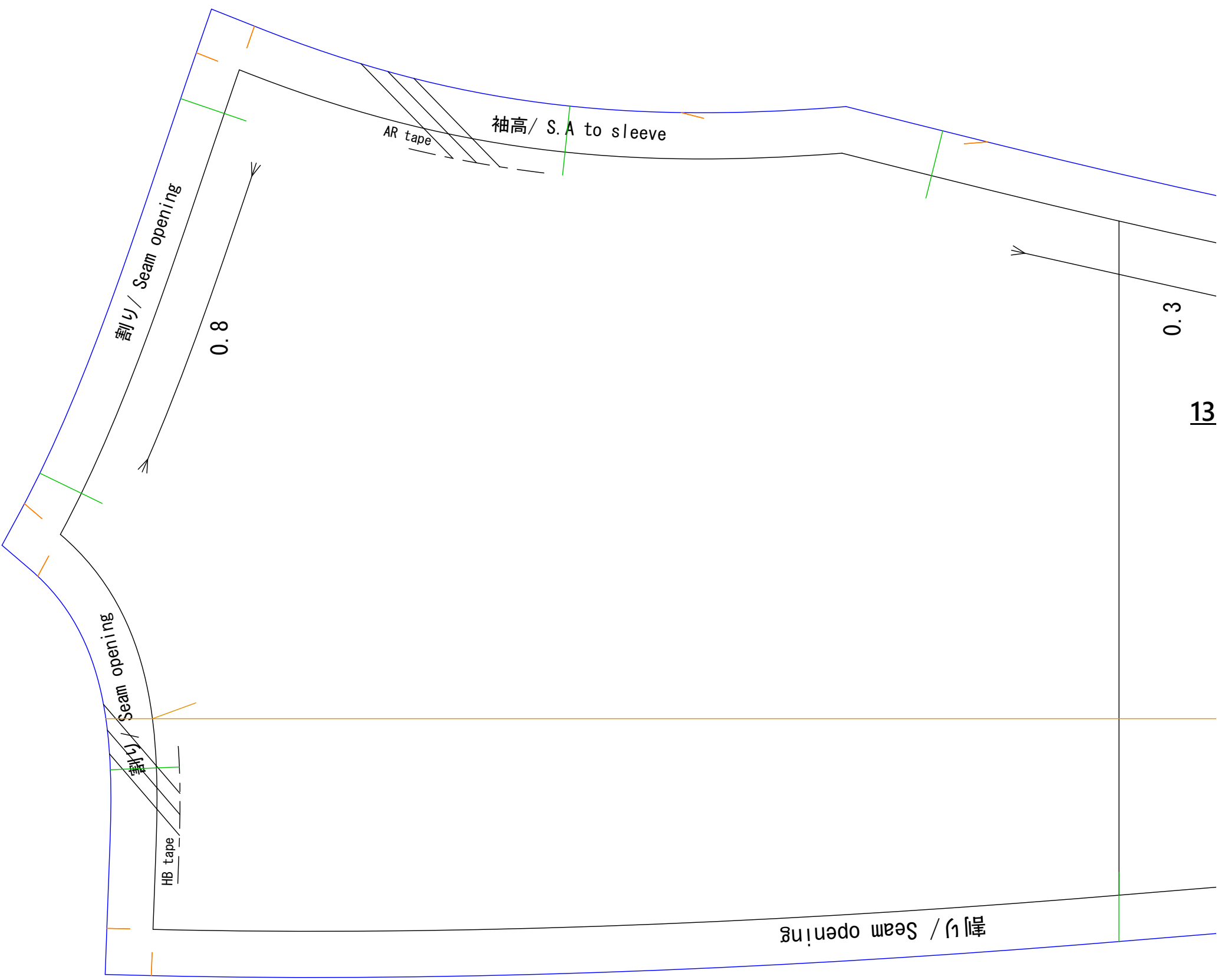
右高 / S.A to right

11

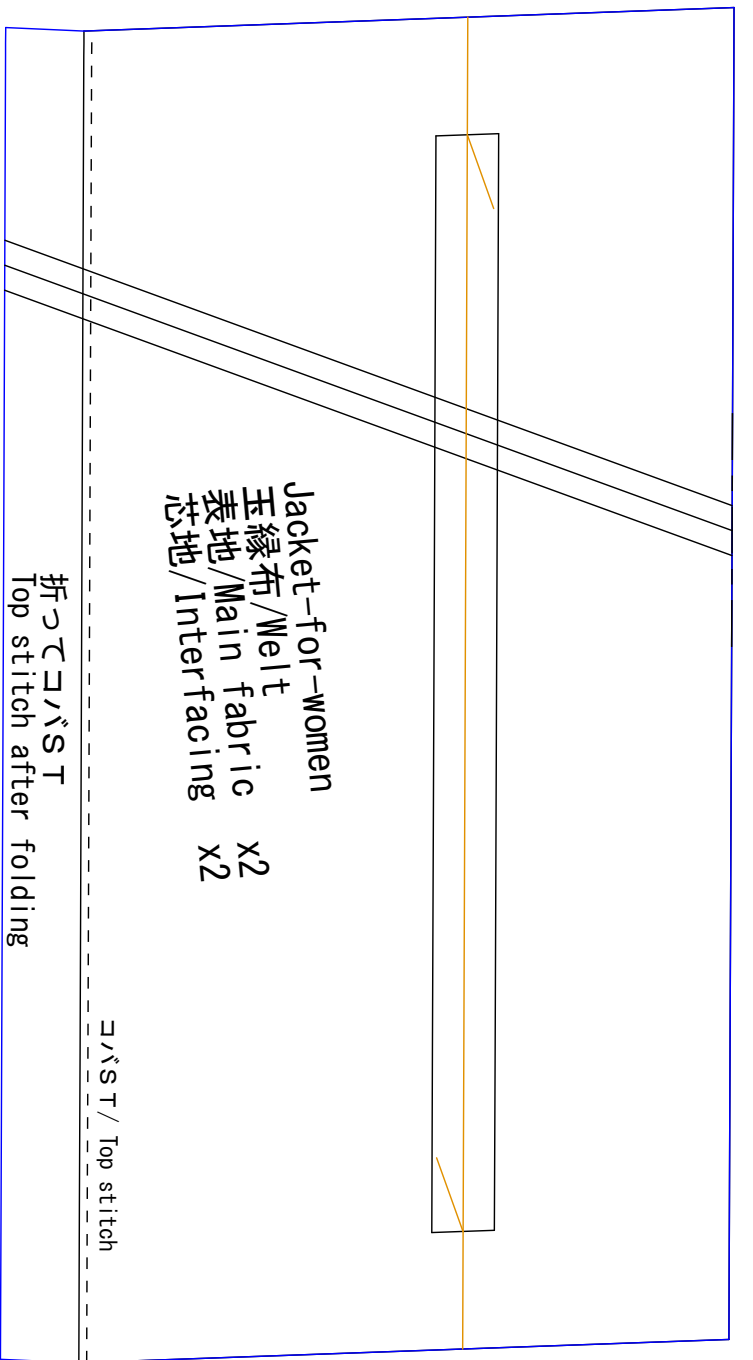


0.3

13



13



9

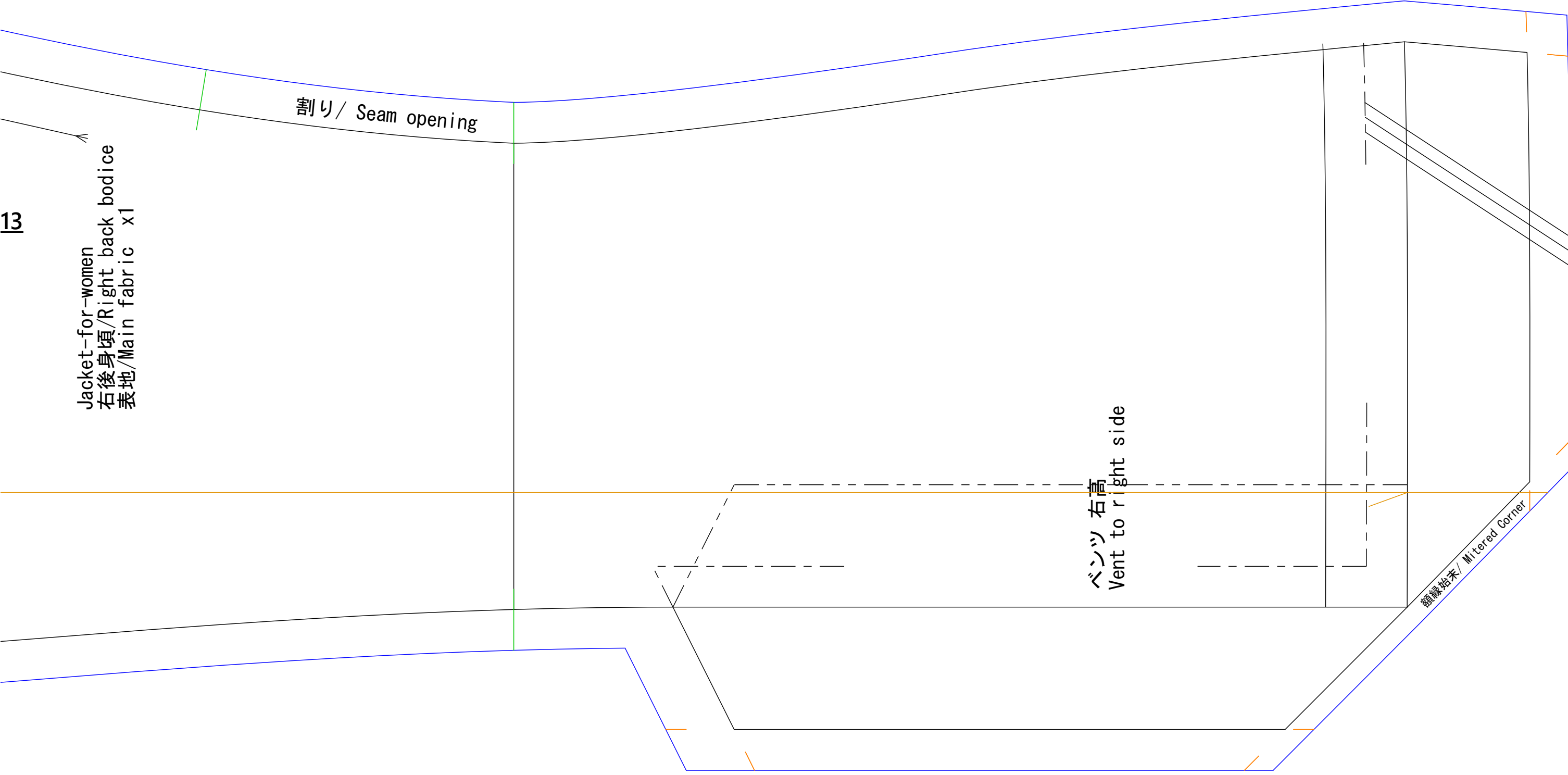
13

Jacket-for-women
右後身頃/Right back bodice
表地/Main fabric x1

割り / Seam opening

ベント 右高
Vent to right side

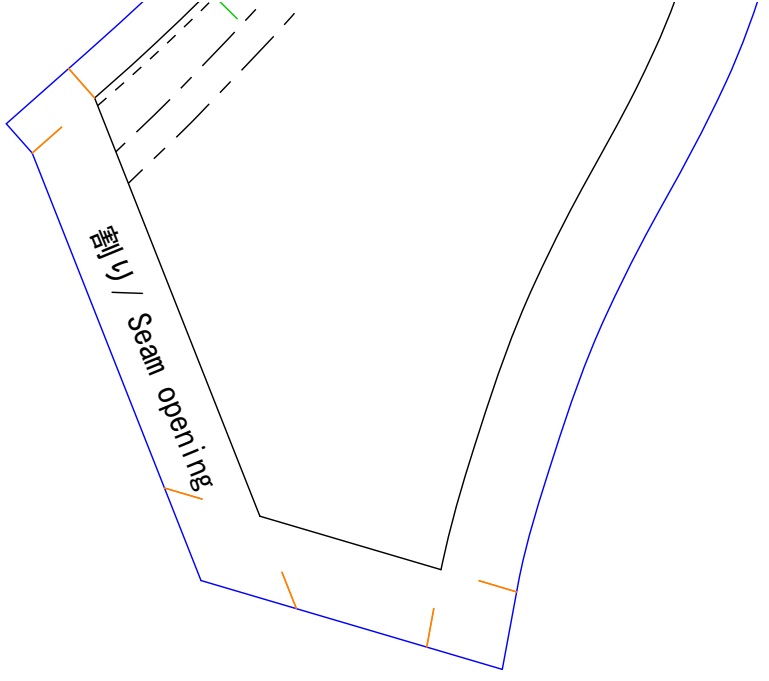
稜線始末 / Mitered Corner



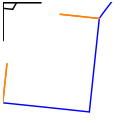
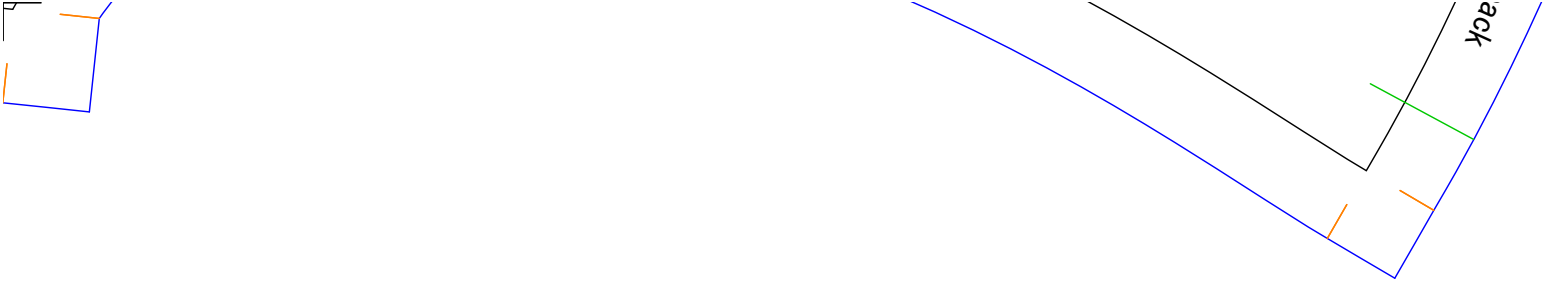
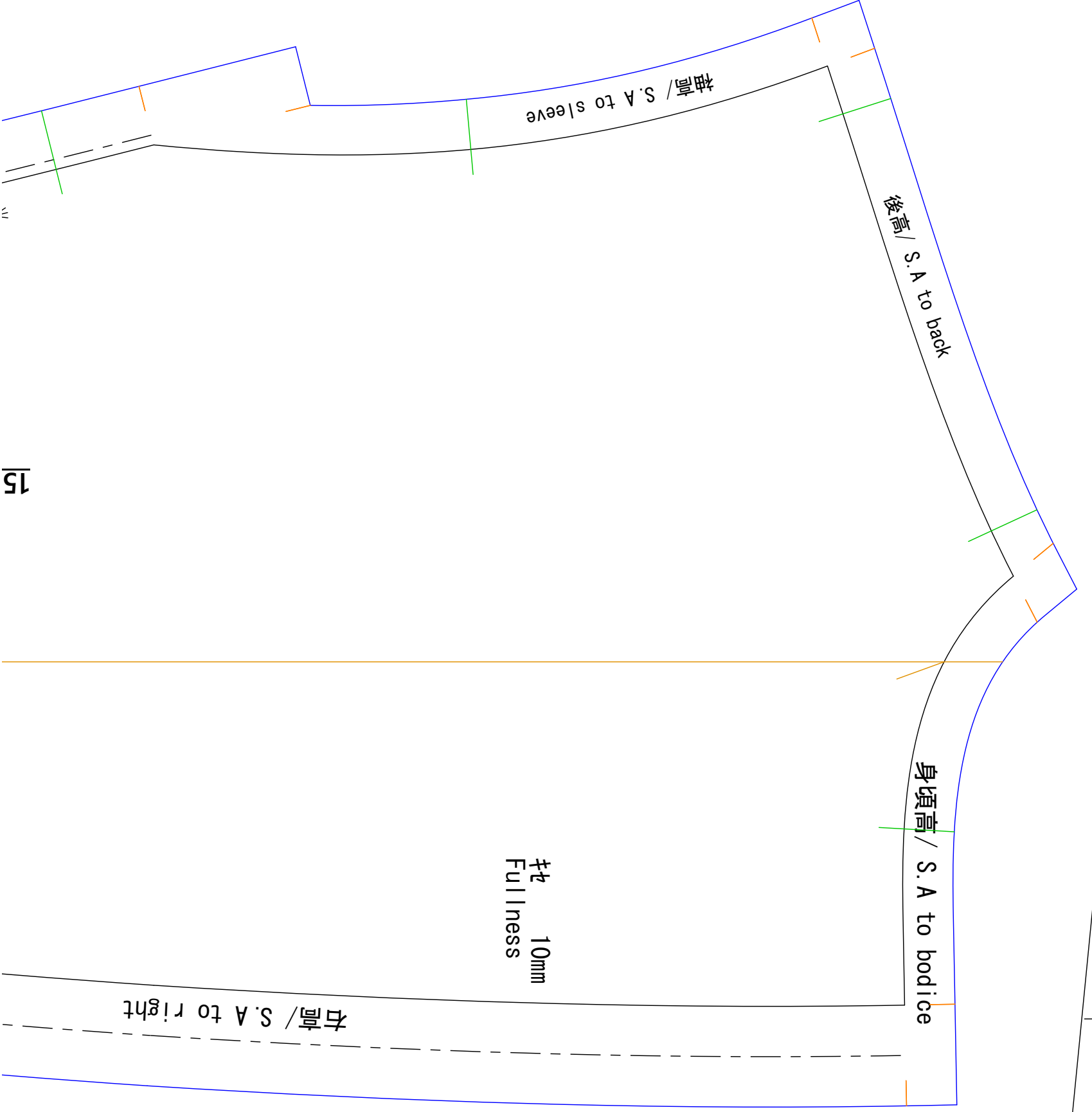
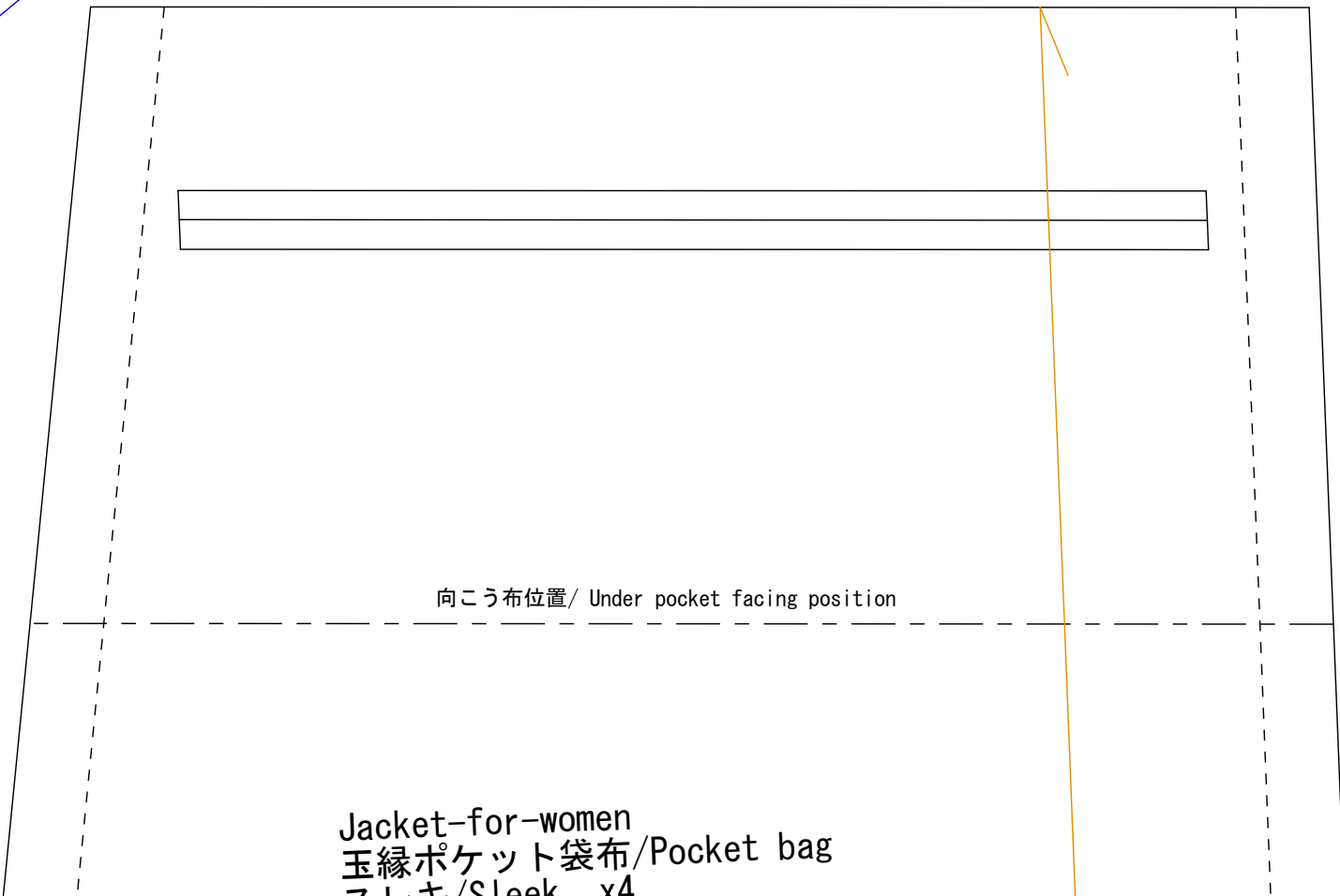
14

10

14



Jacket-for-women
 玉縁ポケット袋布/Pocket bag
 フリス/Slack x4



15

0.3

Jacket-for-women
裏右後身頃/Right back bodice lining
裏地/Lining x1

後高 / S.A to back

裄 2mm
Fullness

16

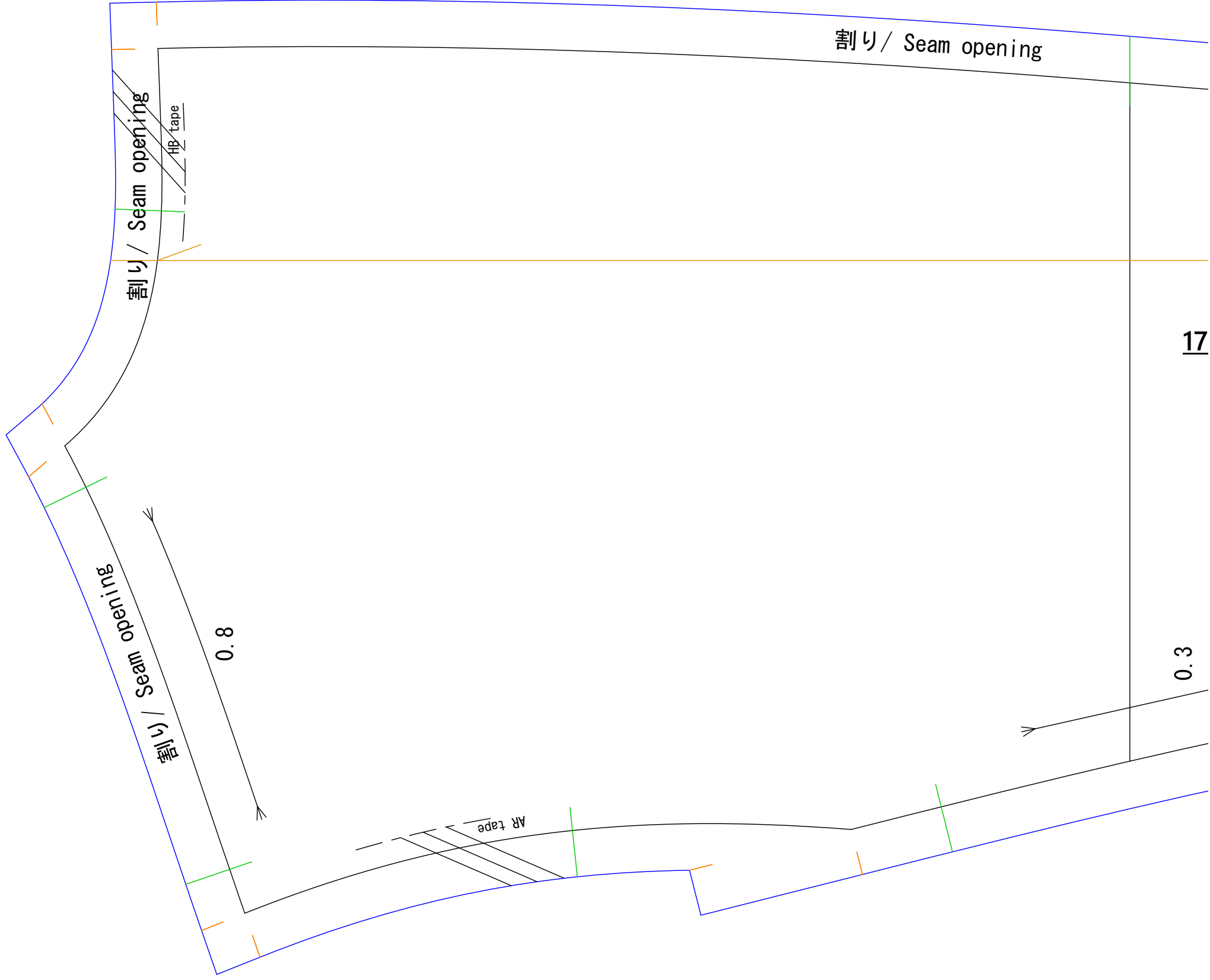
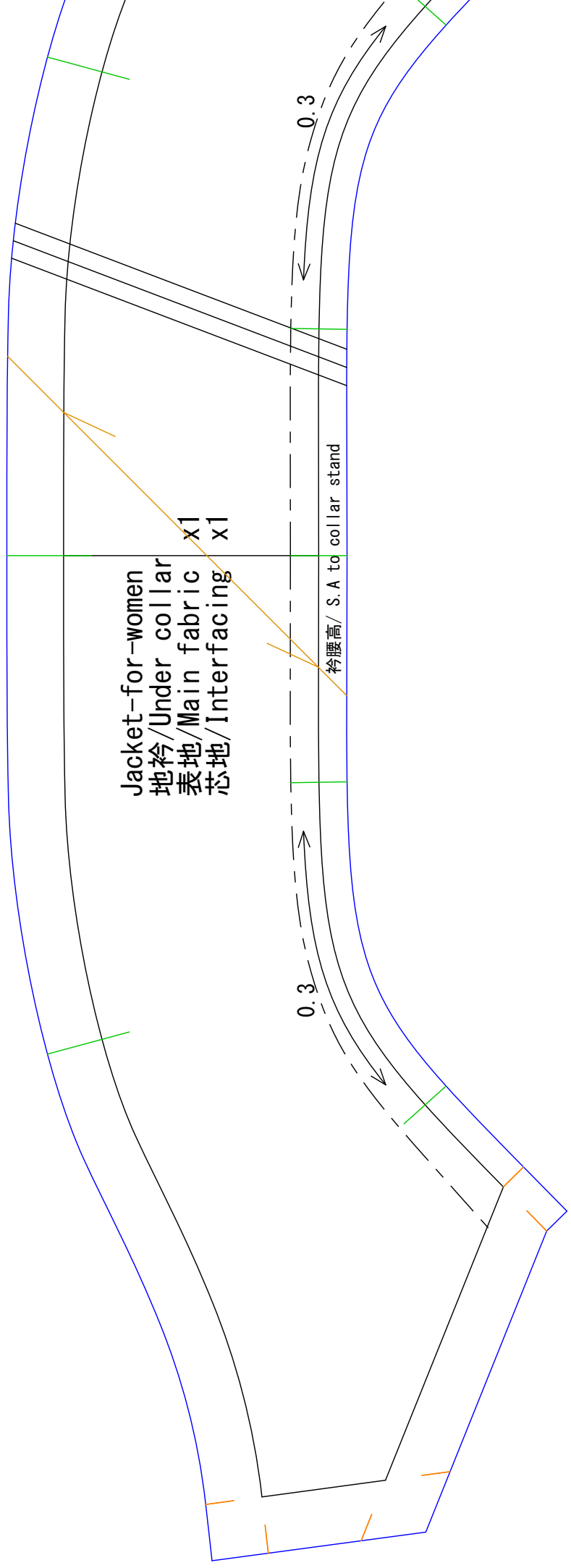
前高 / S.A to front

裄 2mm
Fullness

裄 10mm
Fullness

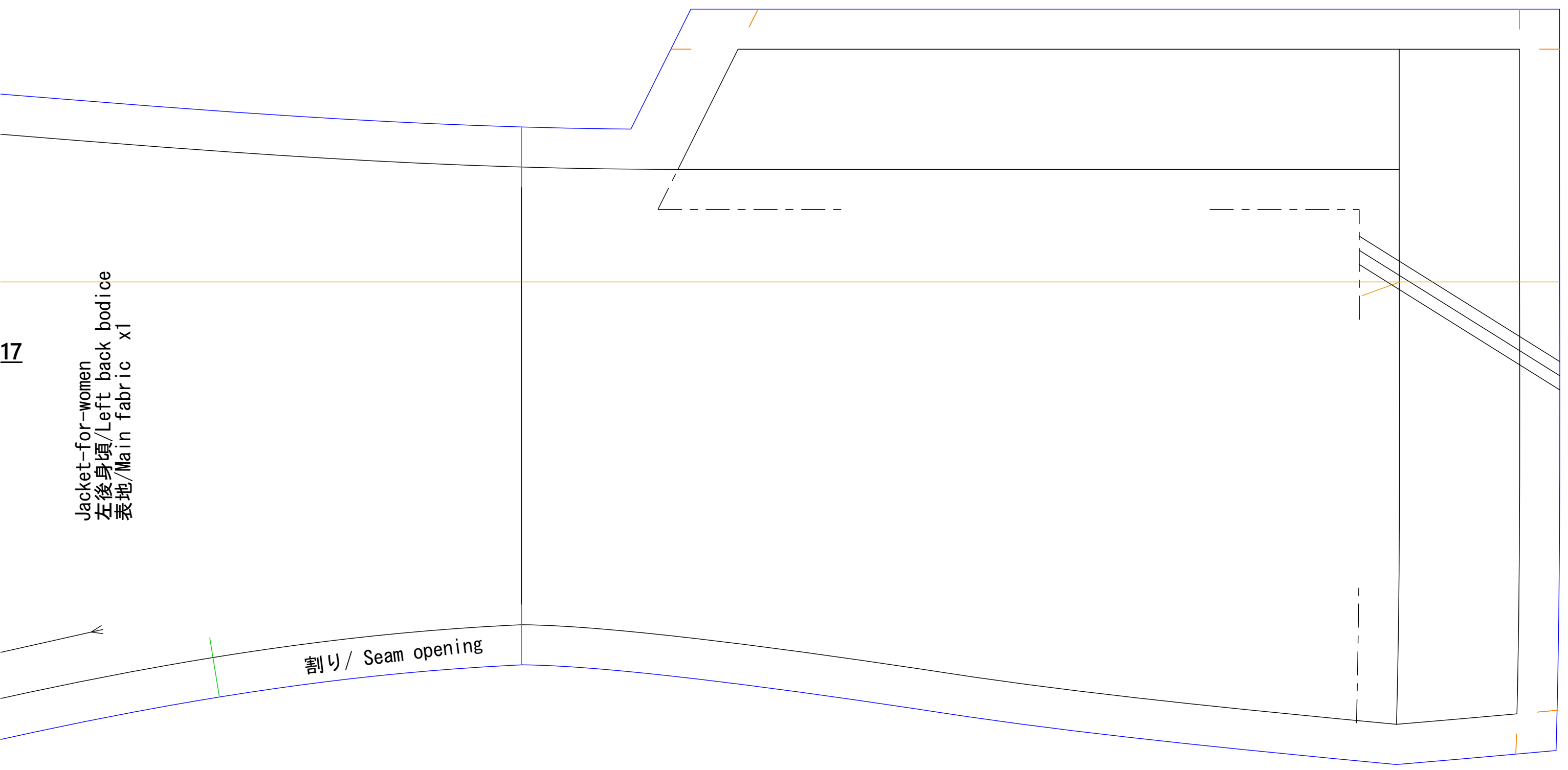
12

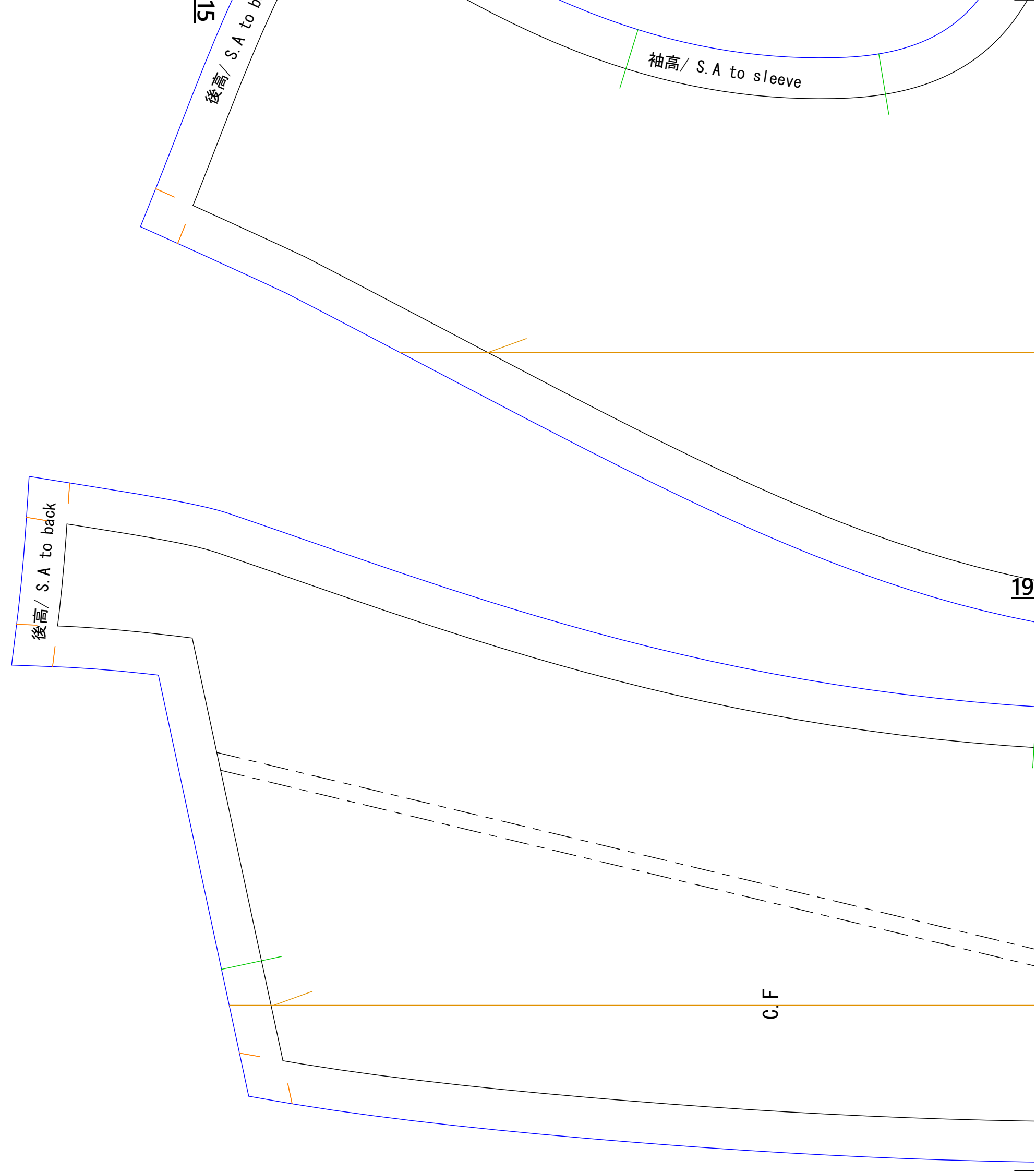
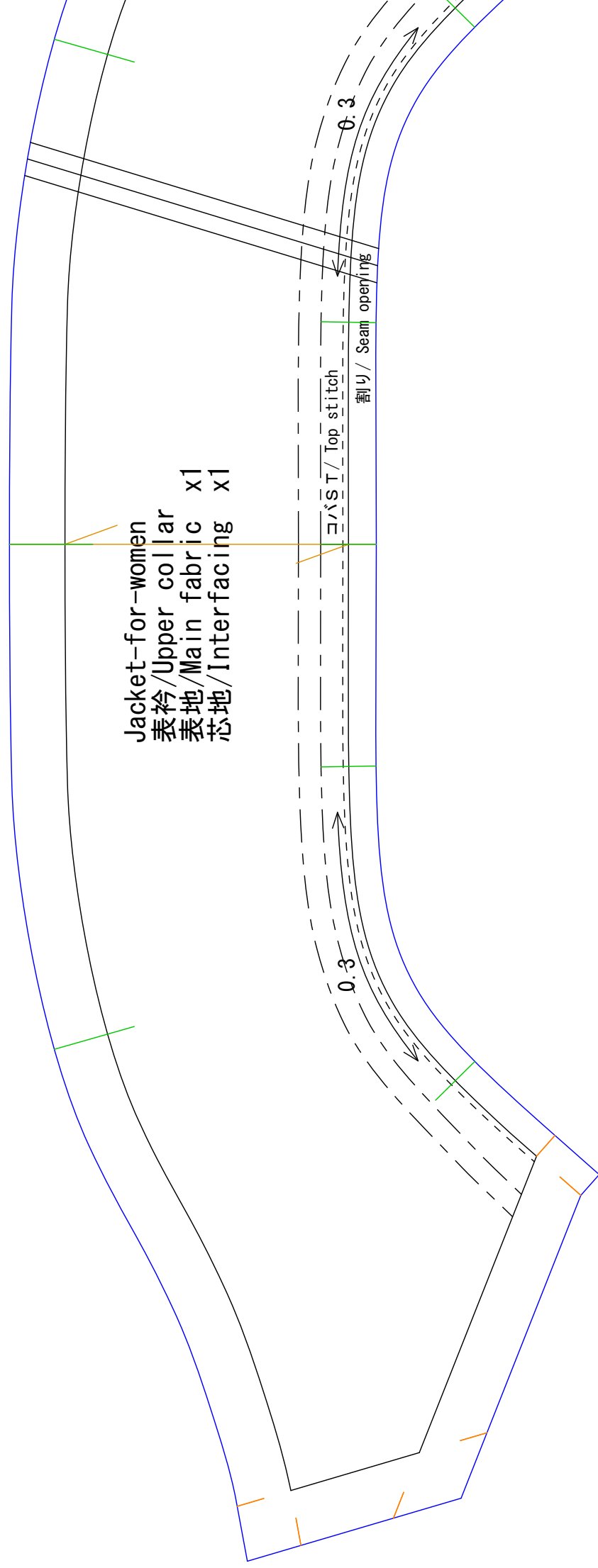




Jacket-for-women
左後身頃/Left back bodice
表地/Main fabric x1

割り / Seam opening





Jacket-for-women
身返し/ Front facing x2
表地/ Main fabric x2
芯地/ Interfacing x2

後高 / S. A to back

後高 / S. A to back

ダーツ 後倒し
Dart to back

裄 2mm
Fullness

Jacket-for-women
裏前身頃/ Front bodice lining
裏地/ Lining x2

裄 10mm
Fullness

折ってまっする
Blind stitch after folding