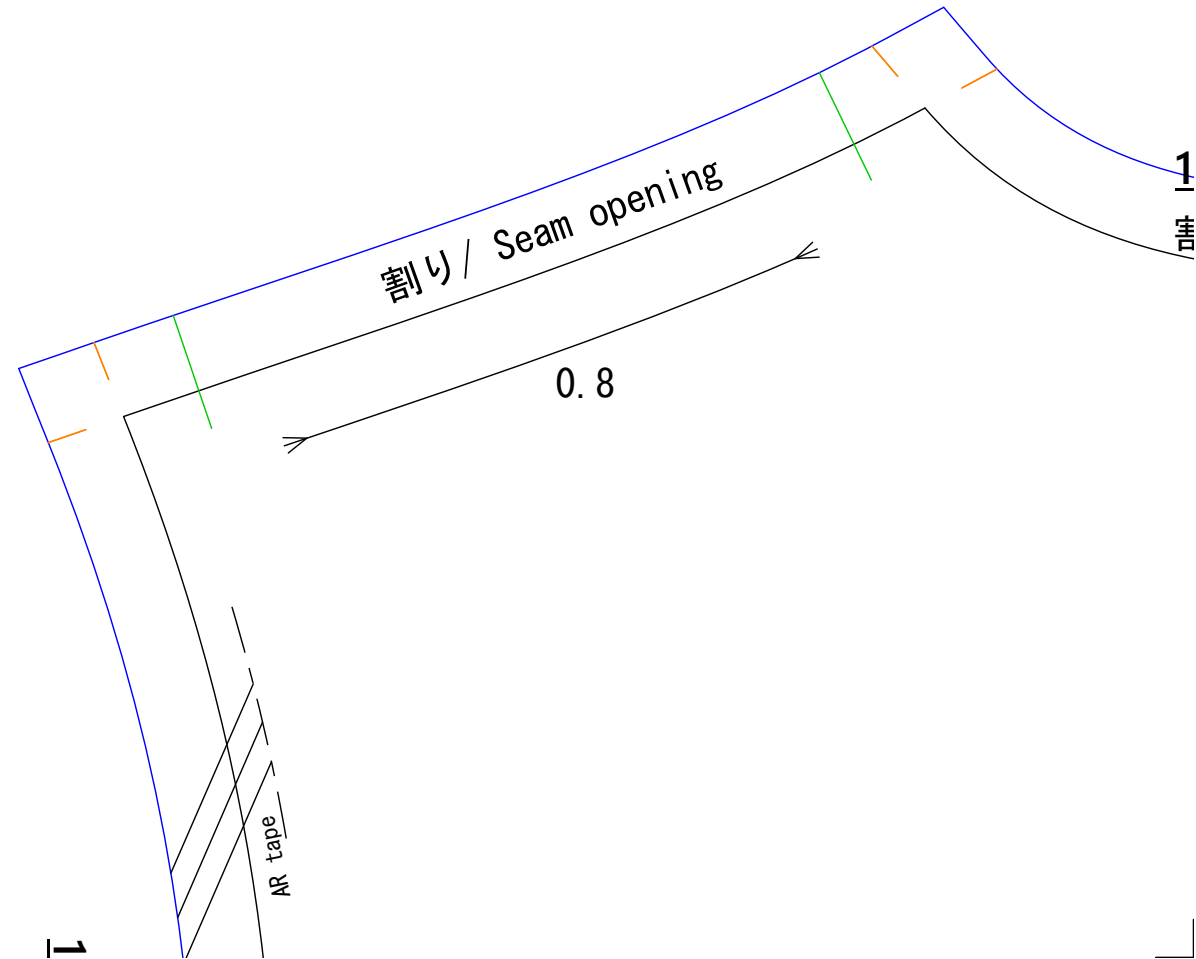
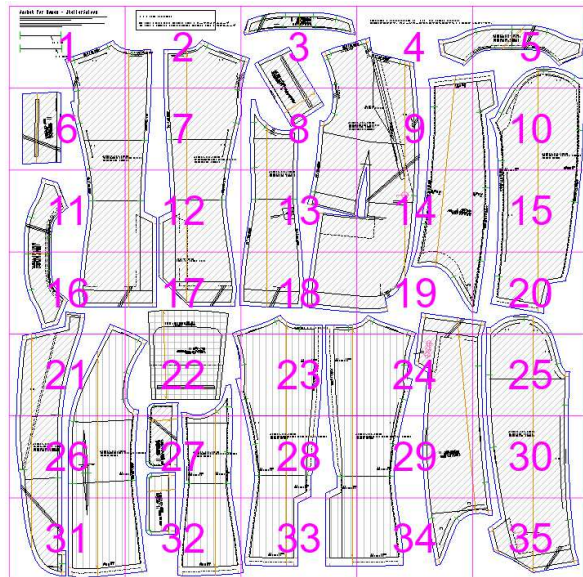
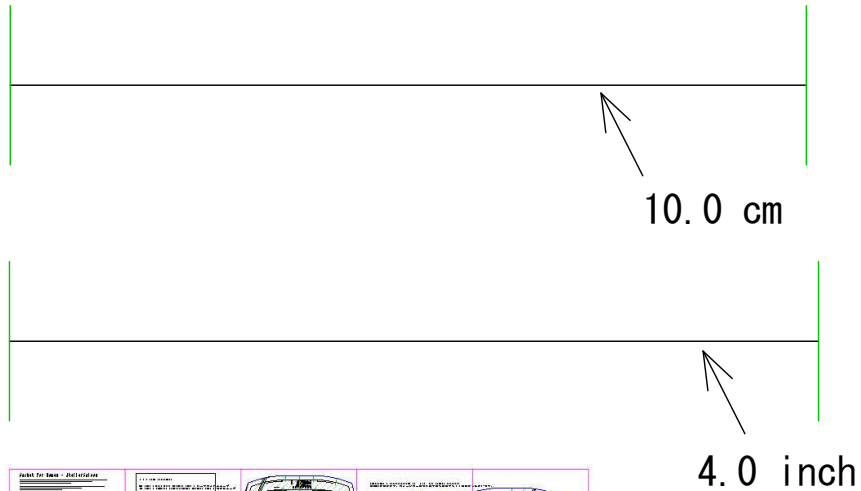


Jacket for Women – AtelierSaison

Please be sure to print in Adobe Acrobat Reader "A4 size" and "Page Sizing & Handling – Custom Scale: 95%".
Measure straight line below with a ruler to make sure it prints correctly at actual size.
*There may be an error of 0.1 to 0.2 mm depending on the scale.

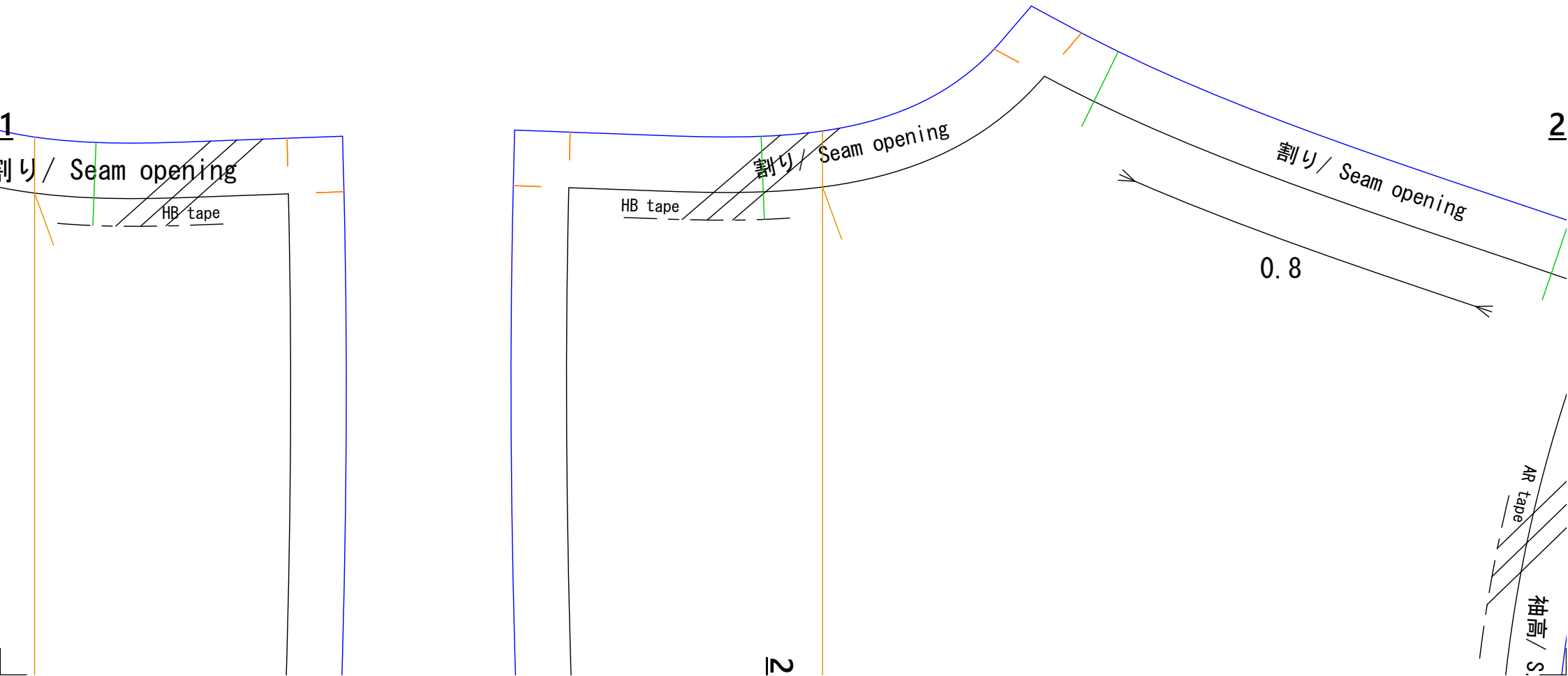
必ずAdobe Acrobat Readerの「A4サイズ」、「ページサイズ処理—カスタム倍率：95%」で印刷してください。
正しく実寸で印刷されているかどうかを下の直線を定規で図って確認してください。
※縮尺により0.1~0.2mm程度誤差が生じる事があります。

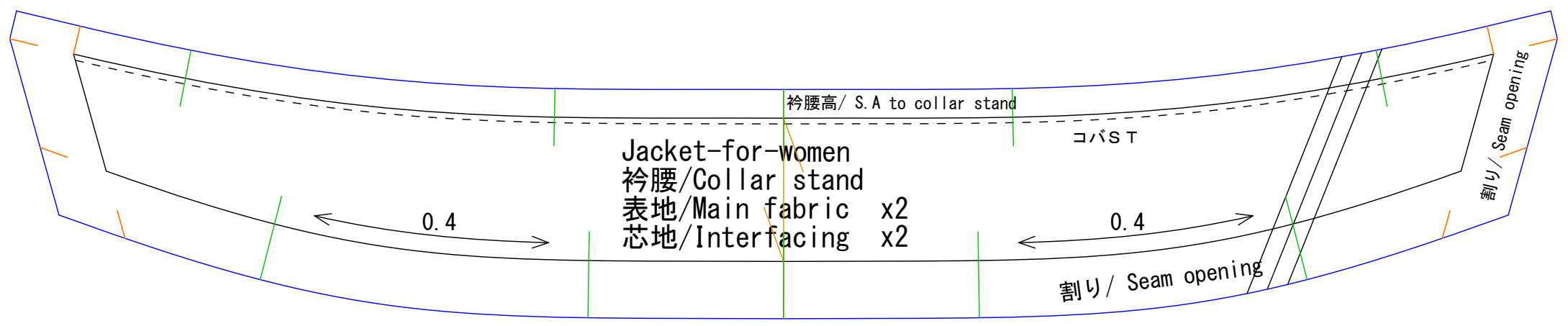
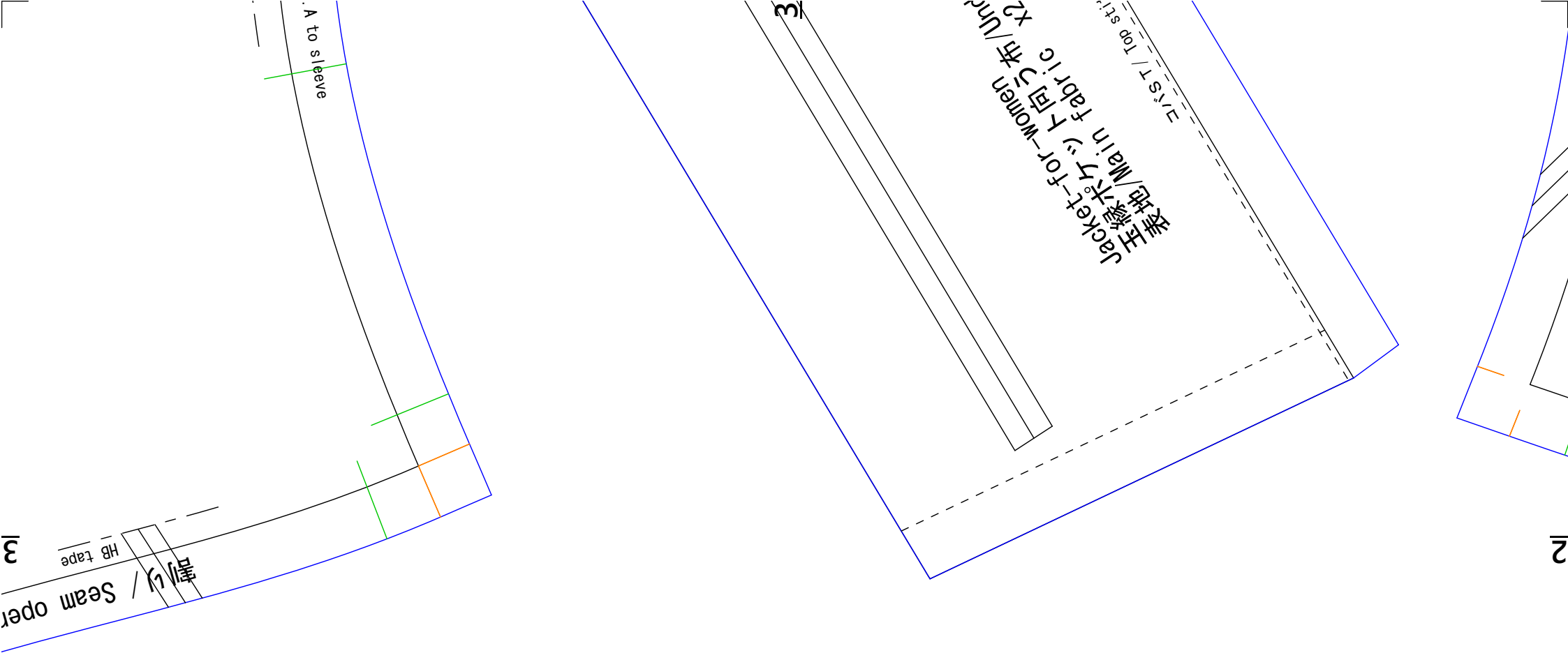


S. A = Seam Allowance

HB tape = Half bias fusible tape = ハーフバイアステープ

AR tape = Armhole reinforcement fusible tape = 端打ちテープ



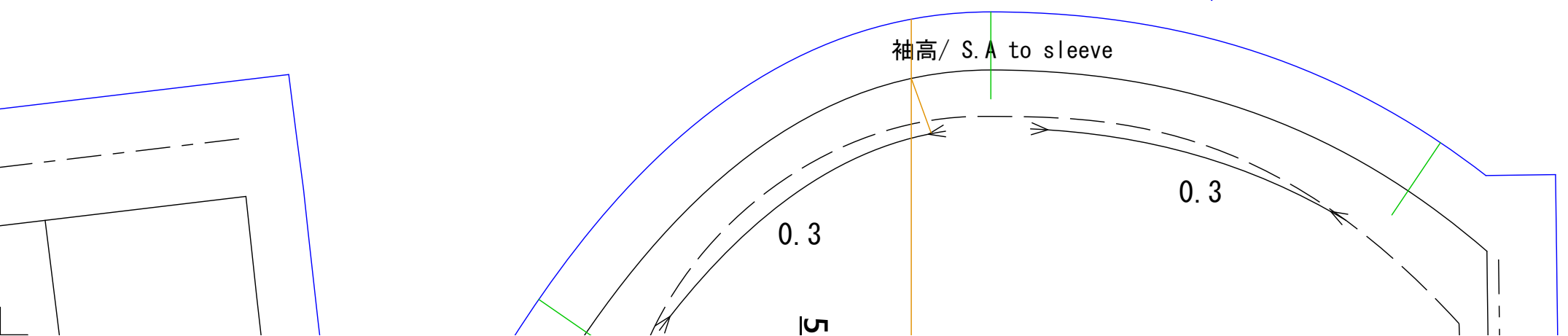
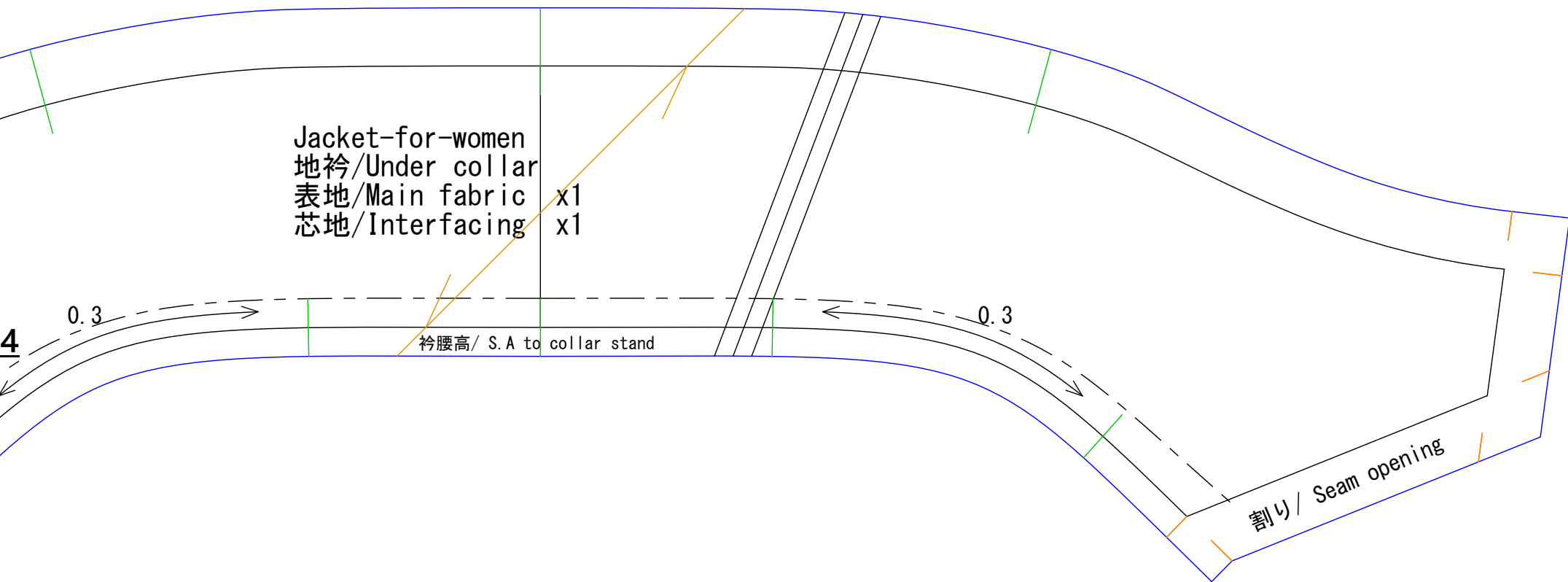


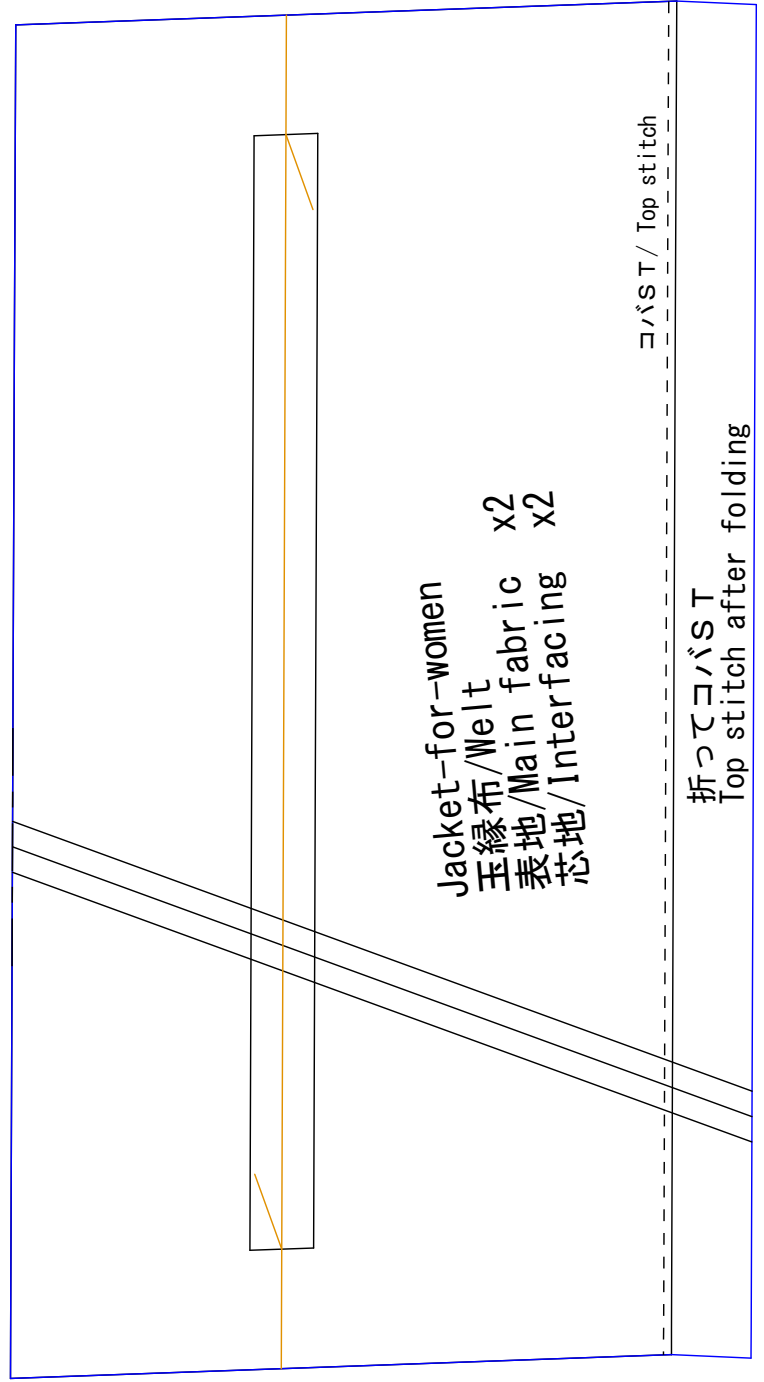
Copyright © AtelierSaison Co., Ltd. All rights reserved.

無断転載禁止です。パターンの一部または全部を複製することは禁止されています。



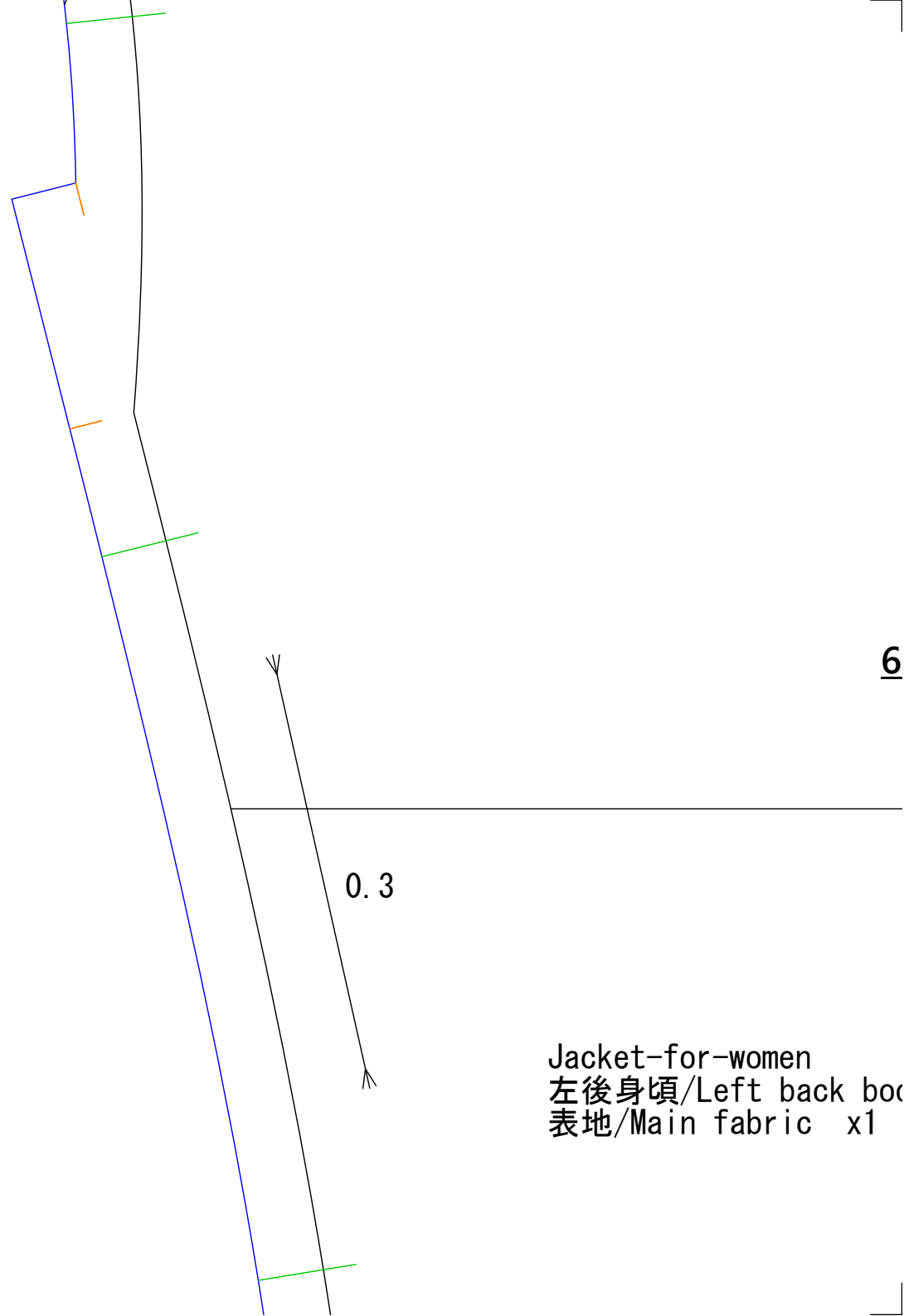
Jacket-for-women
地衿/Under collar x1
表地/Main fabric x1
芯地/Interfacing x1





9

1



6

Jacket-for-women
 左後身頃/Left back bodice
 表地/Main fabric x1

A to sleeve

7

0.3

Jacket-for-women
右後身頃/Right back bodice
表地/Main fabric x1

7

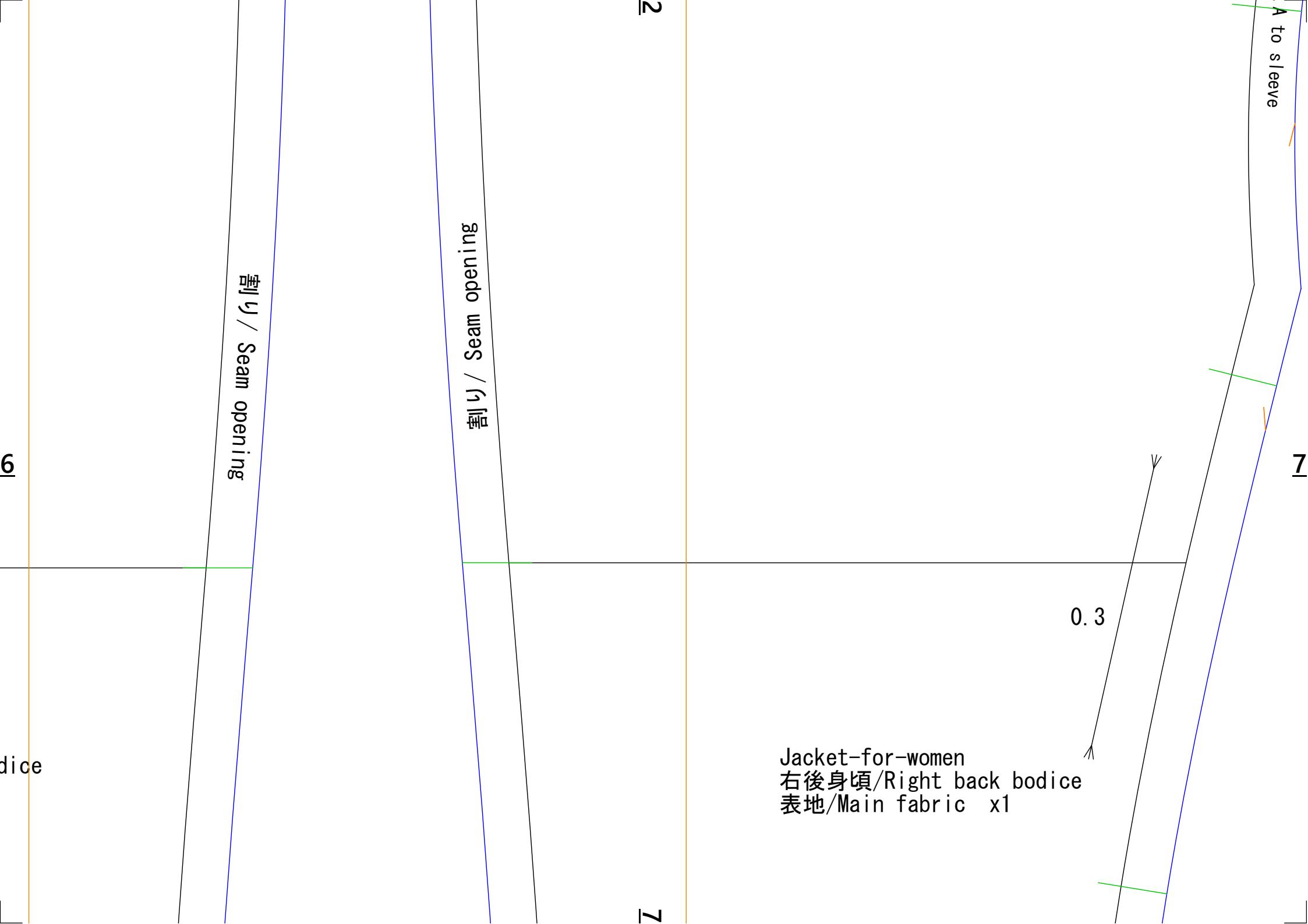
2

割り / Seam opening

割り / Seam opening

6

dice



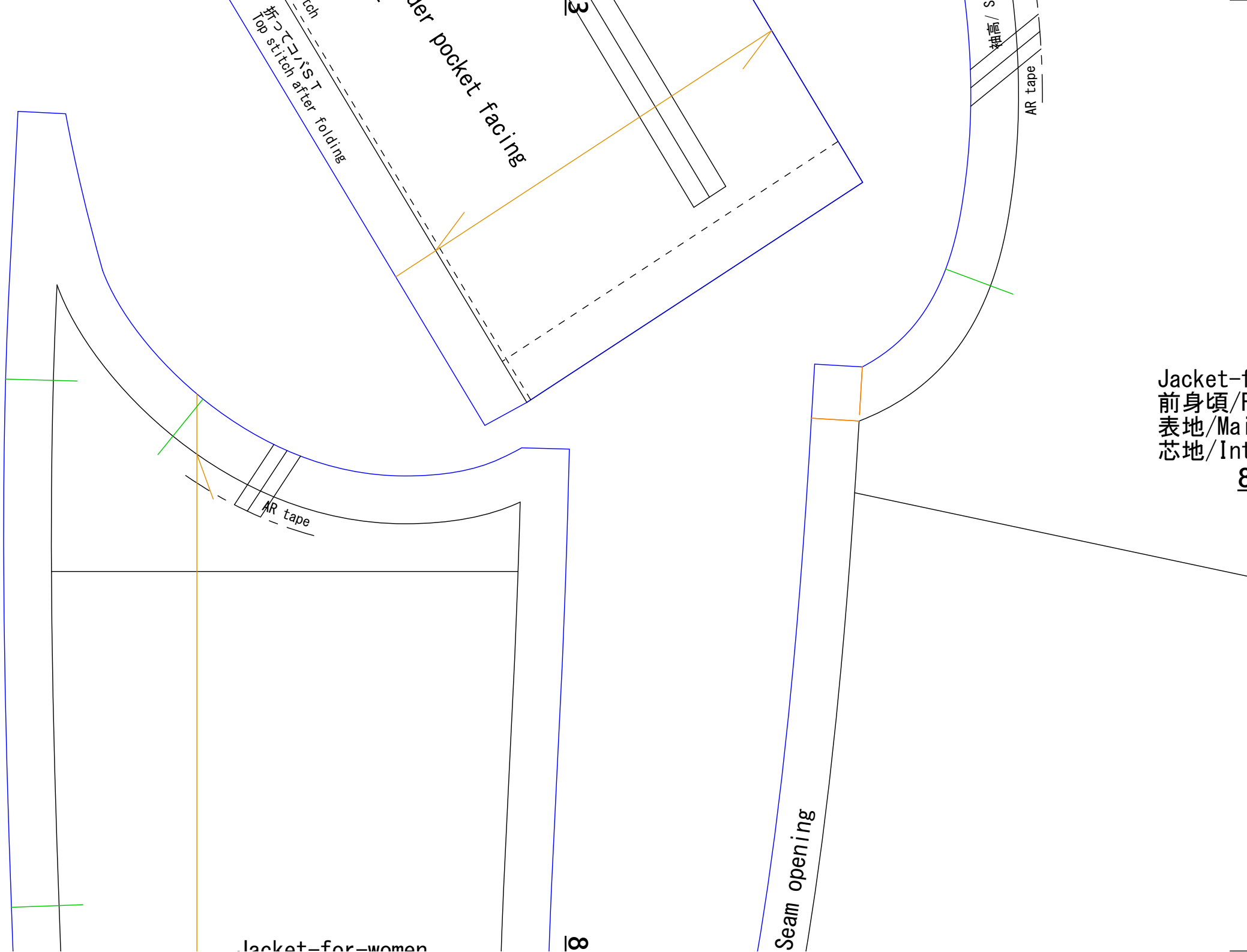
7

Jacket-for-women

8

Seam opening

Jacket-f
前身頃/F
表地/Mai
芯地/Int
8



星止め
Blind Stitch

for-women
front bodice
in fabric x2
interfacing x2
8

C. F

HB tape

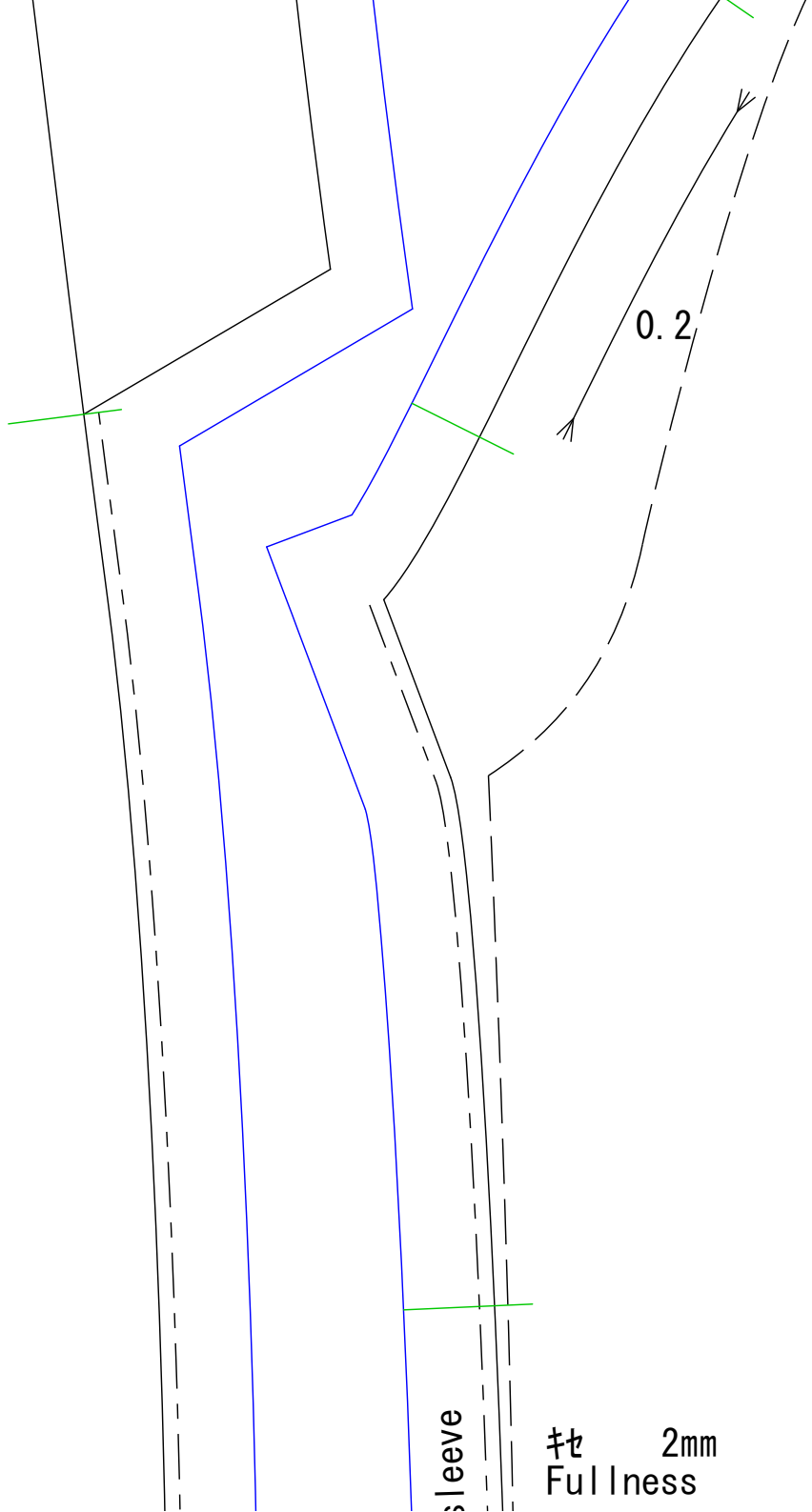
フタテープ
Fusible straight tape
10mm幅
10mm width

割り
Seam opening

9

9

9



sleeve

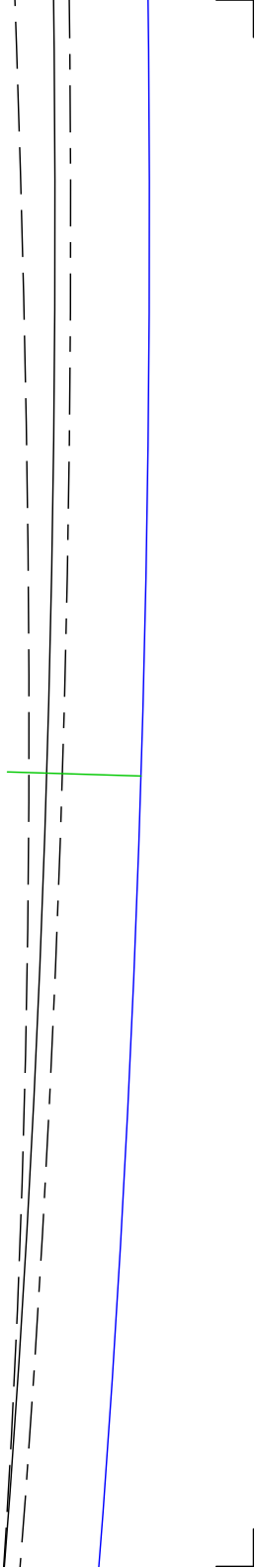
拵 2mm
Fullness

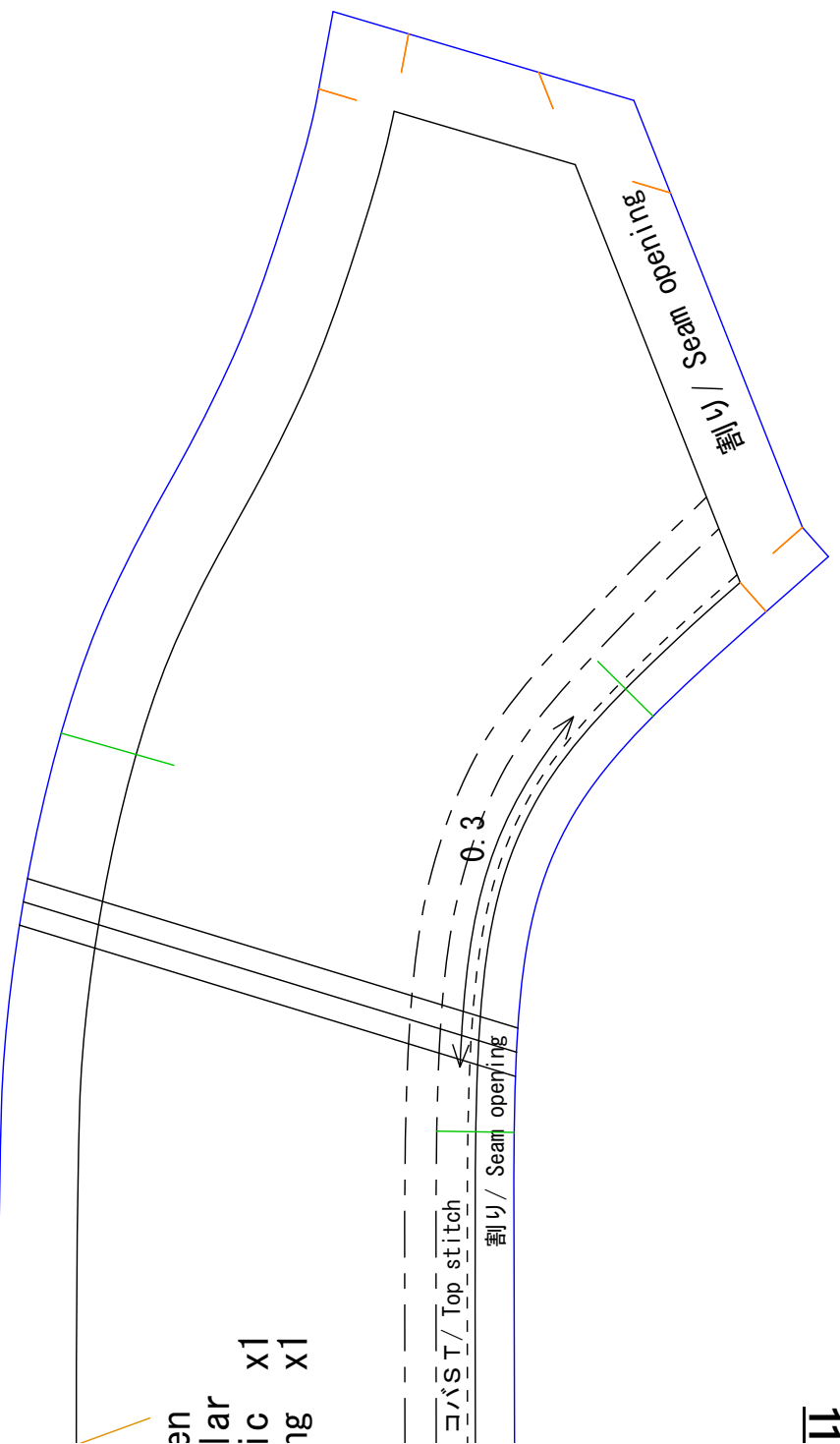
10

5

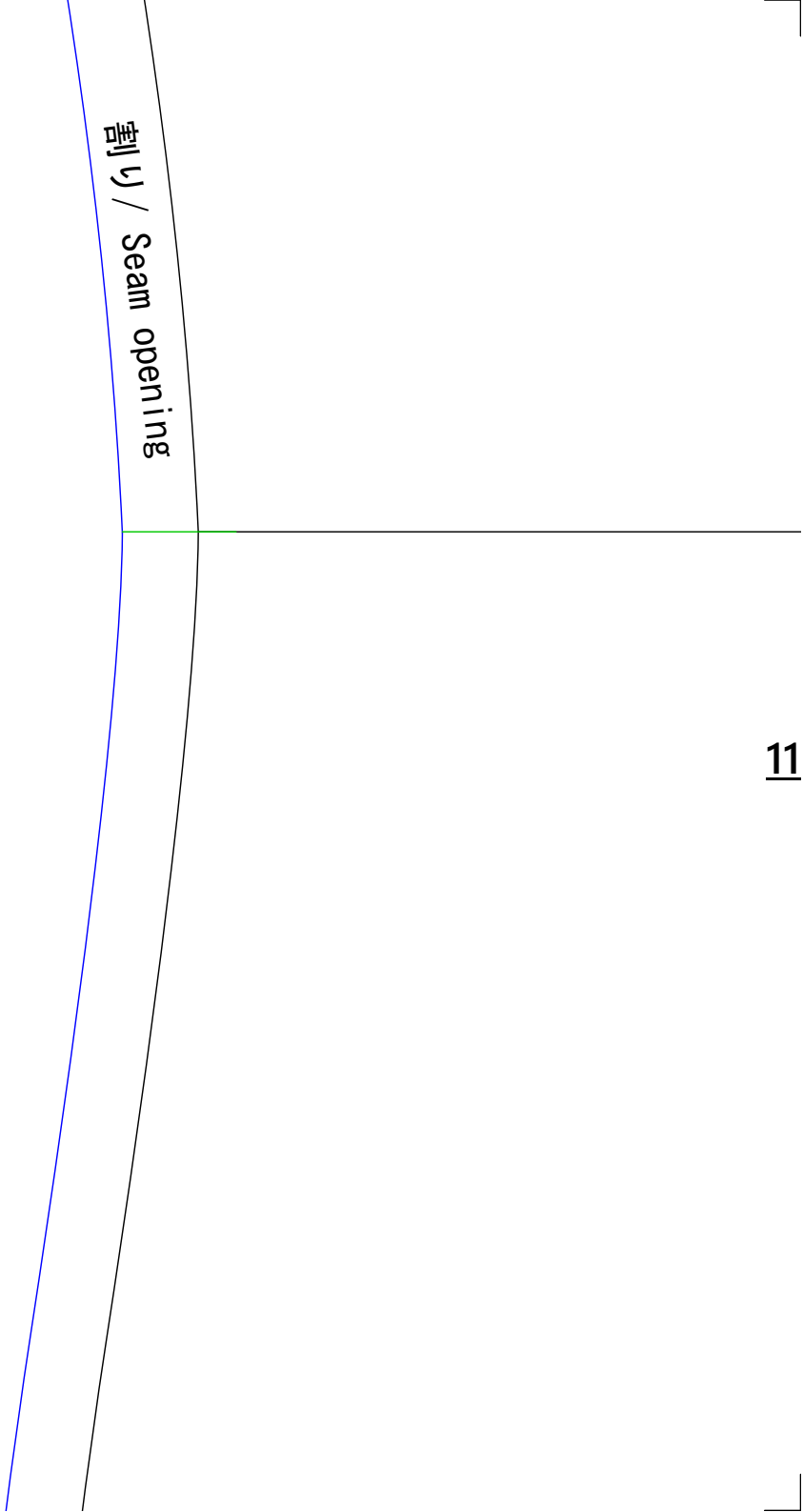
Jacket-for-women
裏外袖/Top sleeve lining
裏地/Lining x2

拵 2mm
Fullness





en
lar x1
lic x1
ng x1



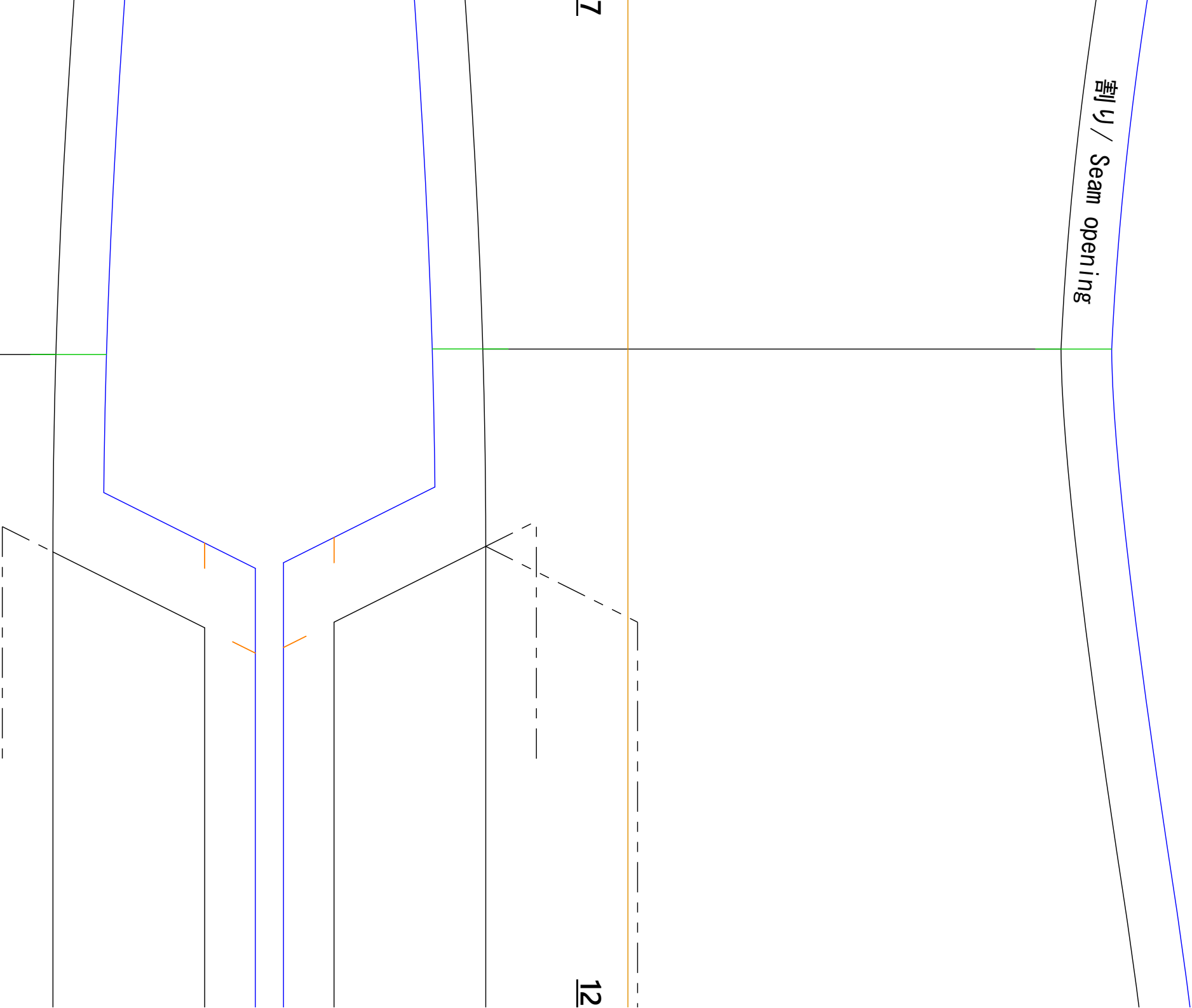
割り / Seam opening

12

12

7

11



JACKET FOR WOMEN
細腹/Side bodice
表地/Main fabric x2

8

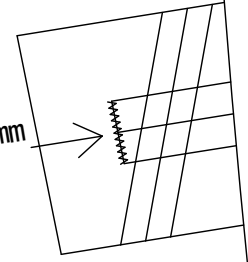
割り /
Seam opening

12

割り / Seam opening

カンヌキ
Bar tacking

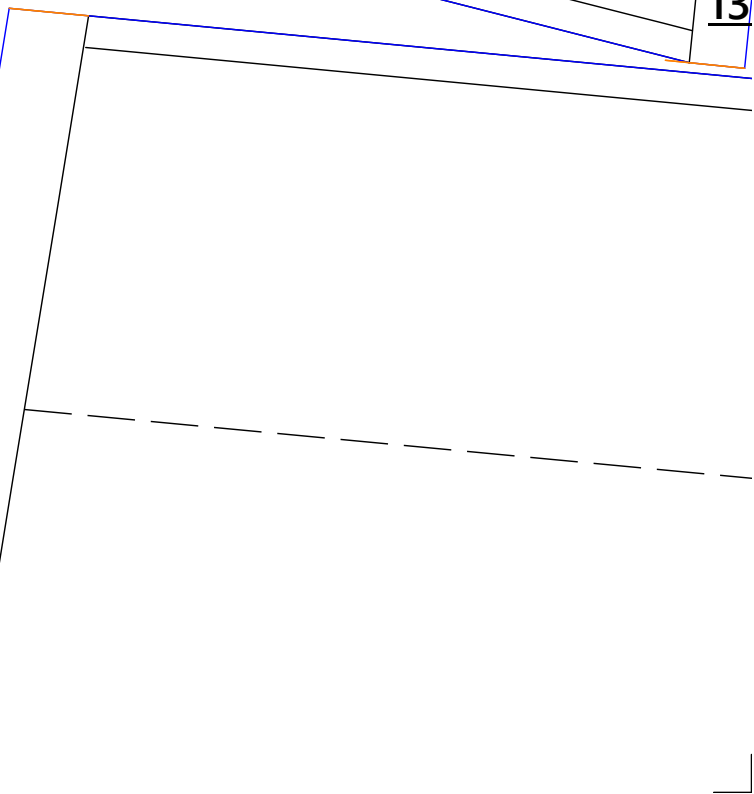
8mm



割り / Seam opening

13

13



Jacket-for-women
裏内袖/Under sleeve lining
裏地/Lining x2

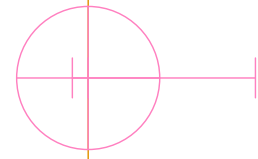
2mm
Fullness
㊦

外袖高 / S. A to top sleeve

6

14

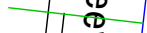
鈕 / Button 20mm
鳩目穴 / Button hole 23mm



カシメキ
8mm
Bar tacking

13

外袖高 / S. A to top sleeve



15

10

0.4

外袖高 / S. A to top sleeve

外袖高 / S. A to top sleeve



Fullness
2mm

14

Jacket-for-wom
表衿/Upper col
表地/Main fabr
芯地/Interfaci

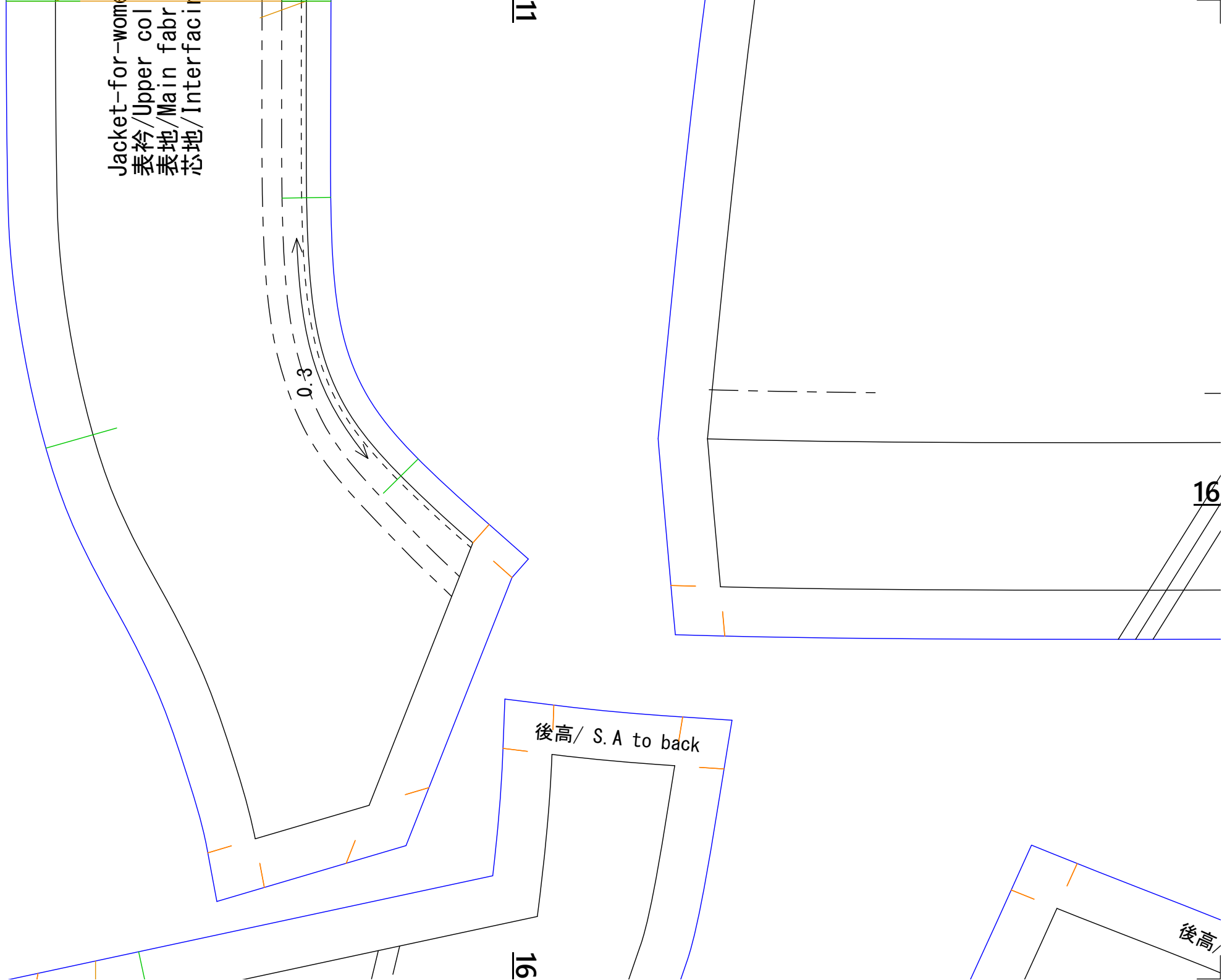
0.3

16

後高/ S.A to back

16

後高



12

ベント 右高
Vent to right side

16

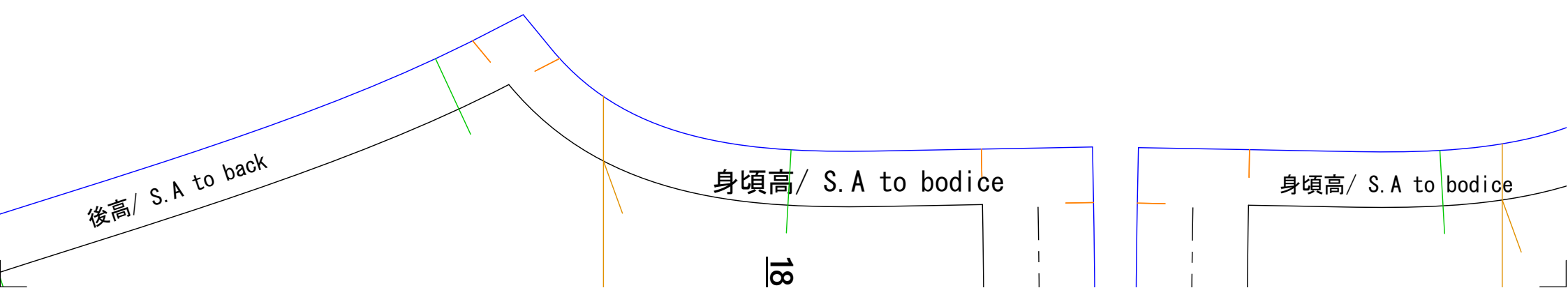
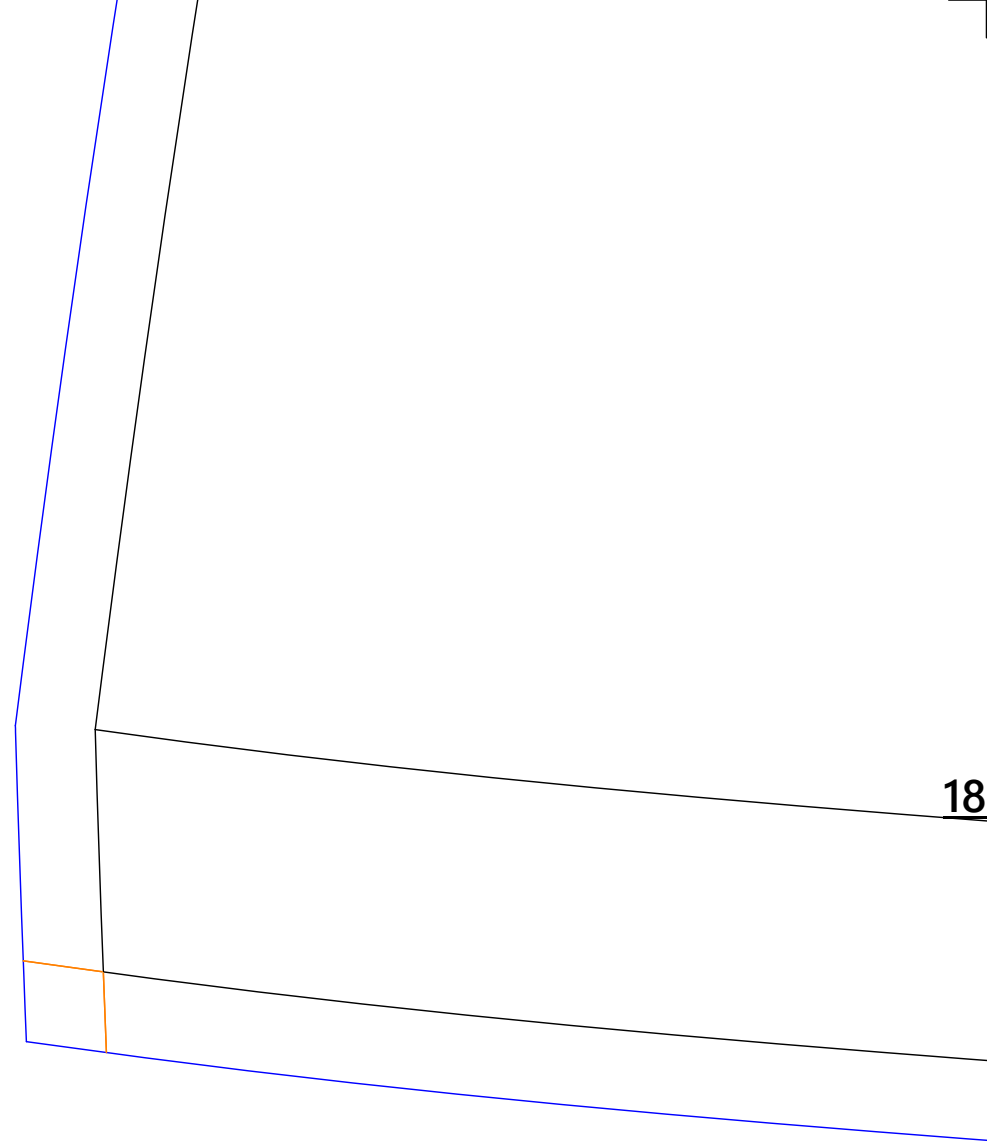
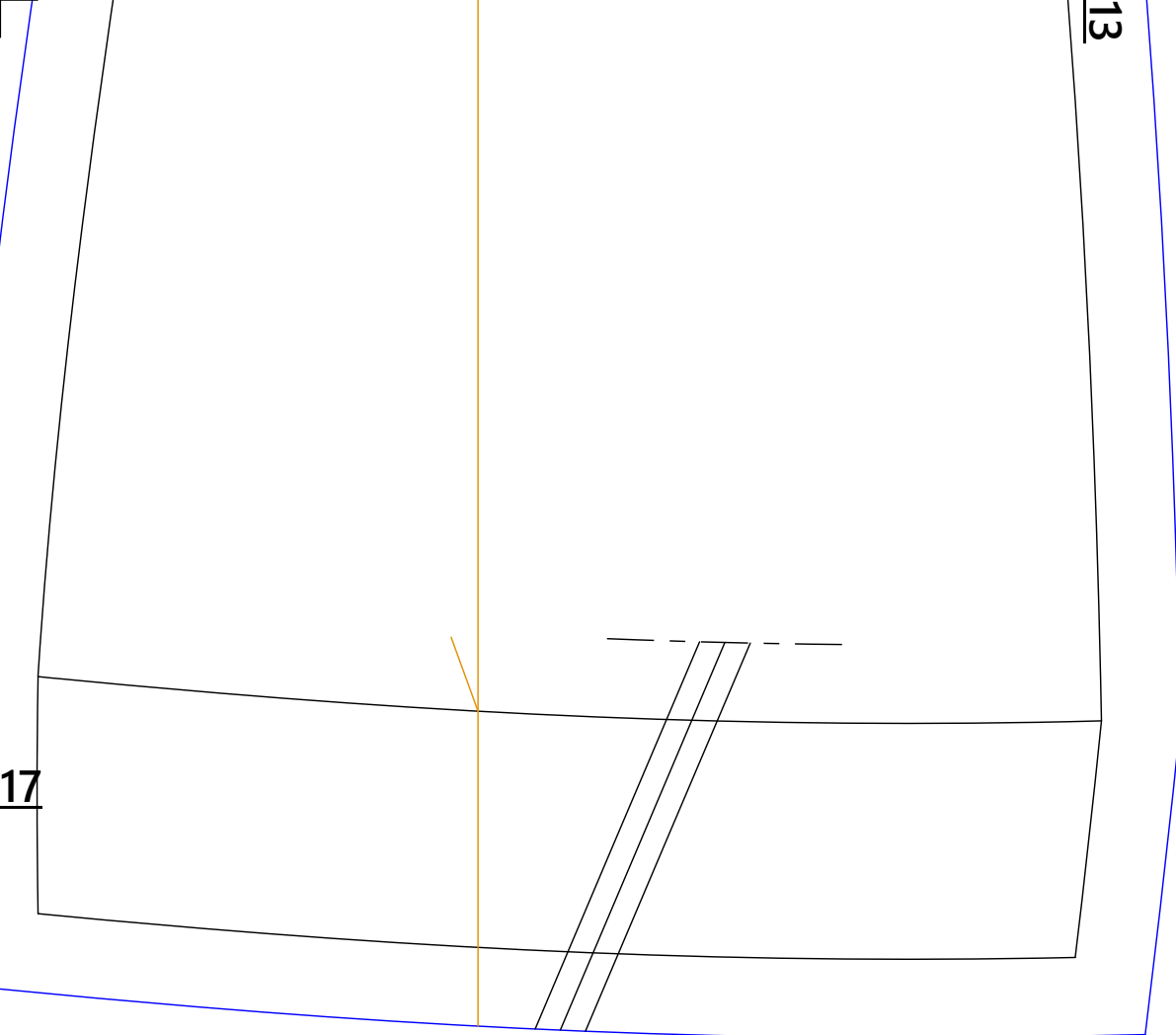
緞縁始末 / Mitered Corner

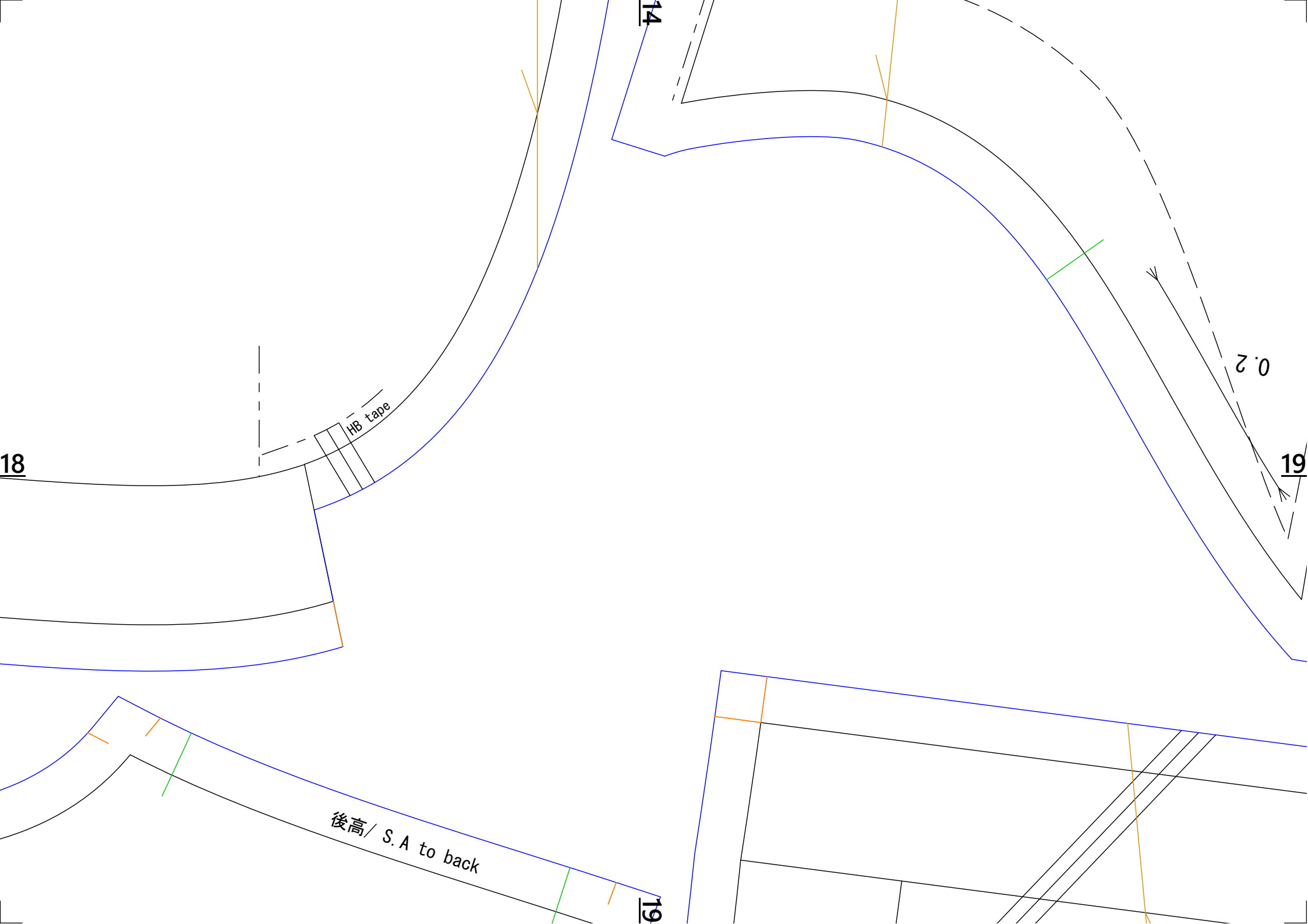
17

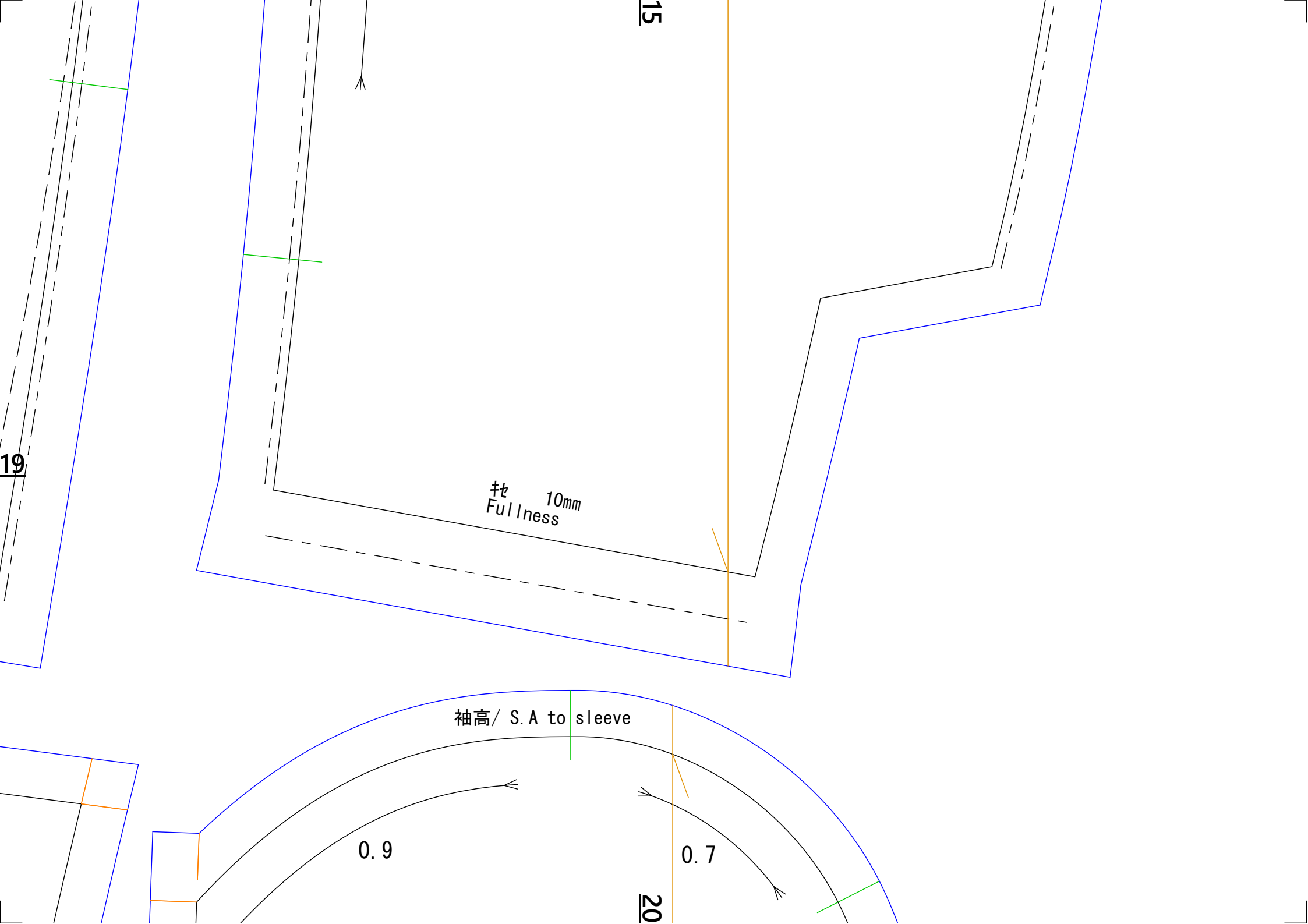
袋布周囲 2度縫い
Sew the pocket bag twice

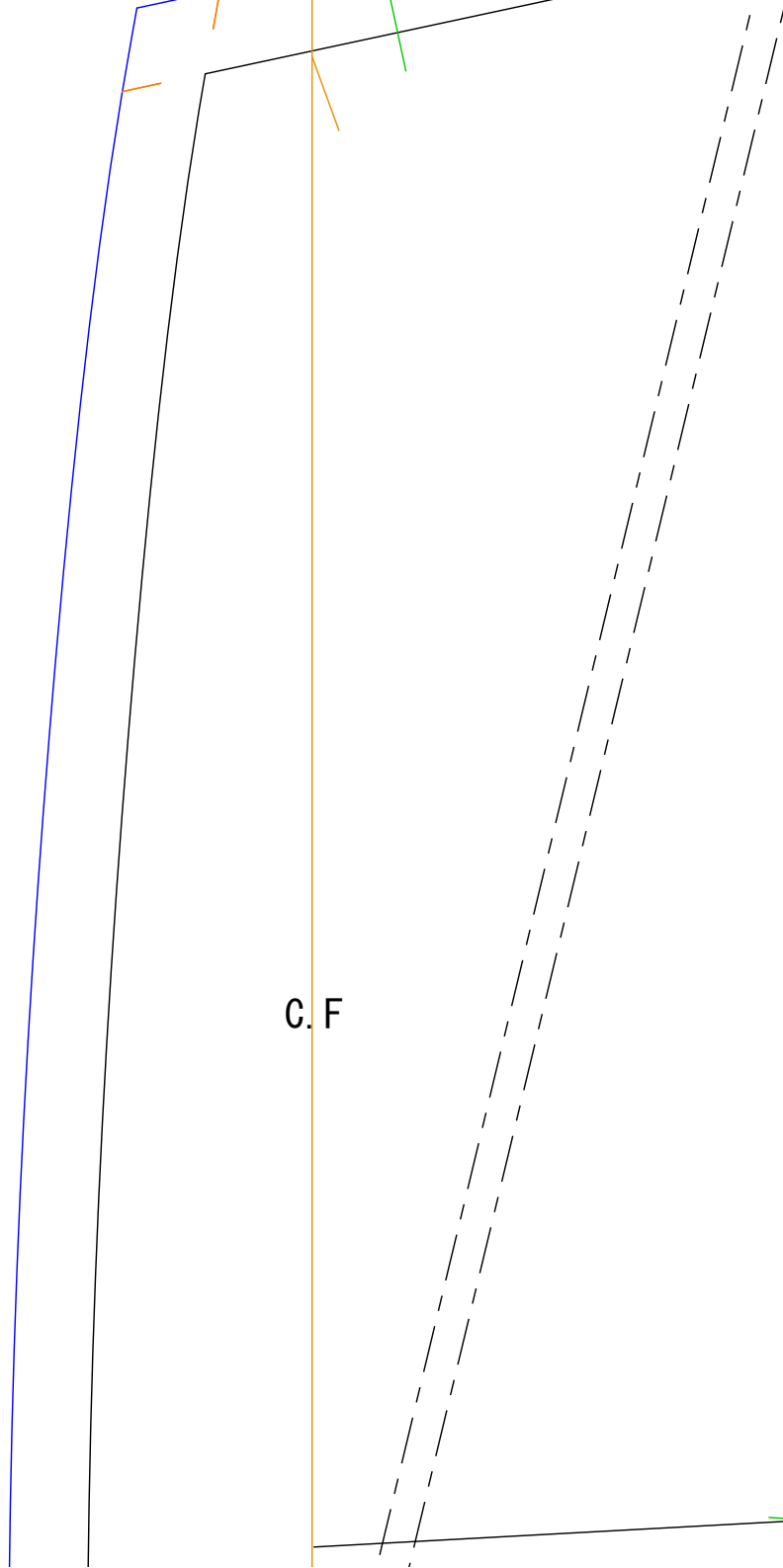
17

S. A to









C. F

21

16



21

TO SLEEVE

袖高 / S. A to sleeve

22

17

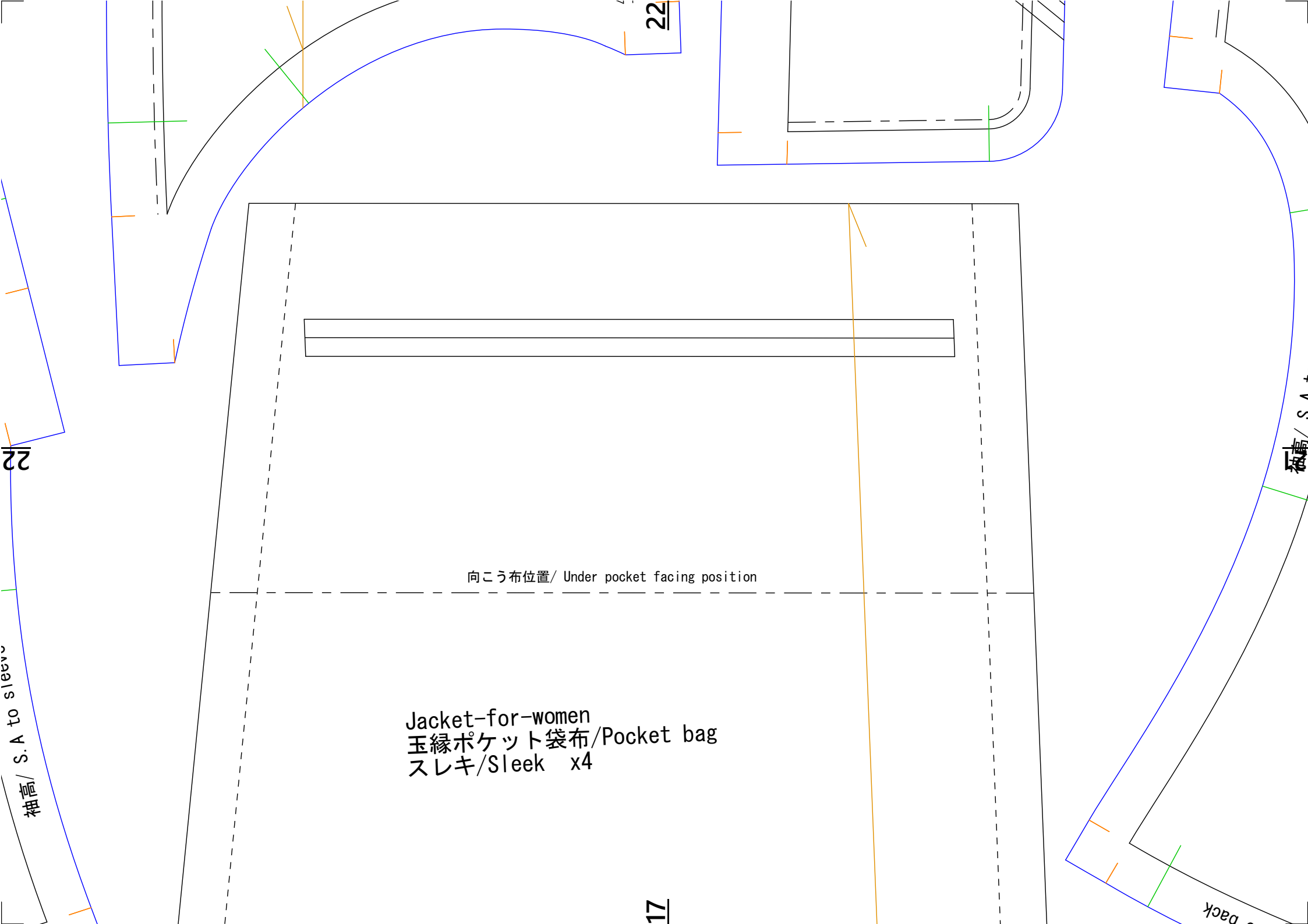
Jacket-for-women
玉縁ポケット袋布/Pocket bag
スレキ/Sleek x4

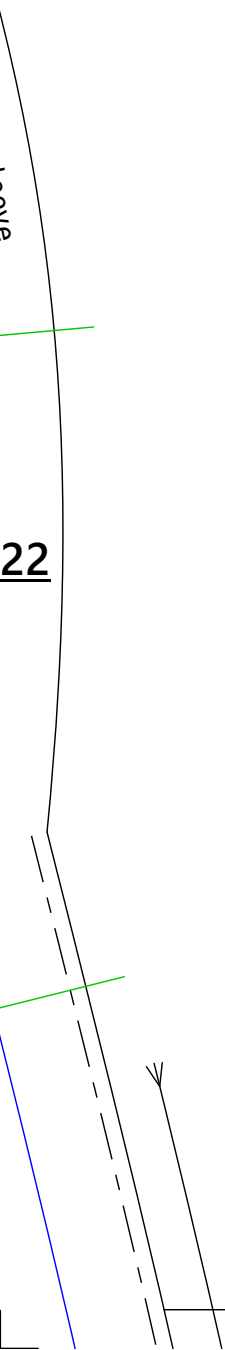
向こう布位置 / Under pocket facing position

22

裾幅 / S. A +

バック





22

18

± 10mm
Fullness

右高 / S. A to right

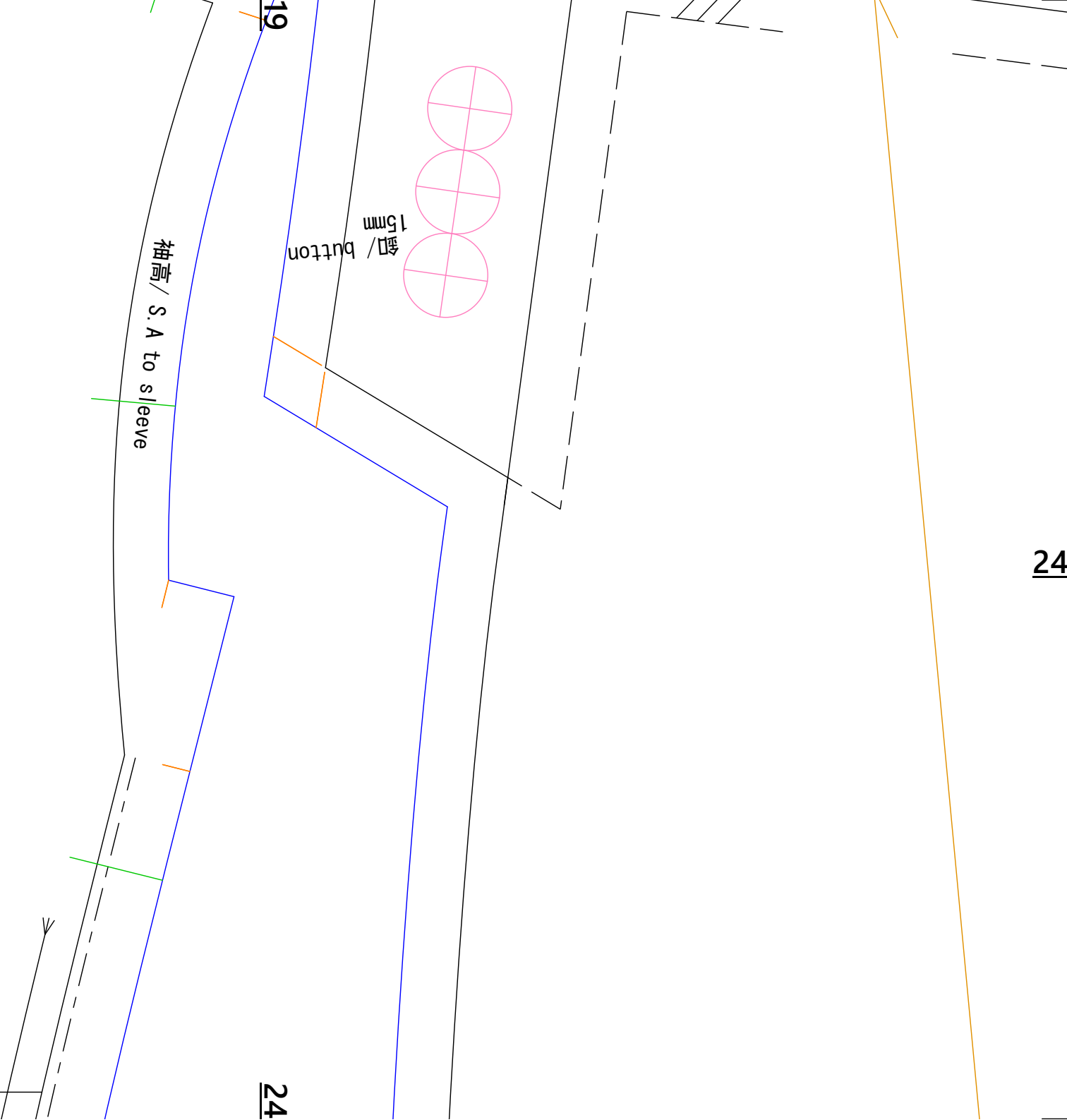
23

± 10mm
Fullness

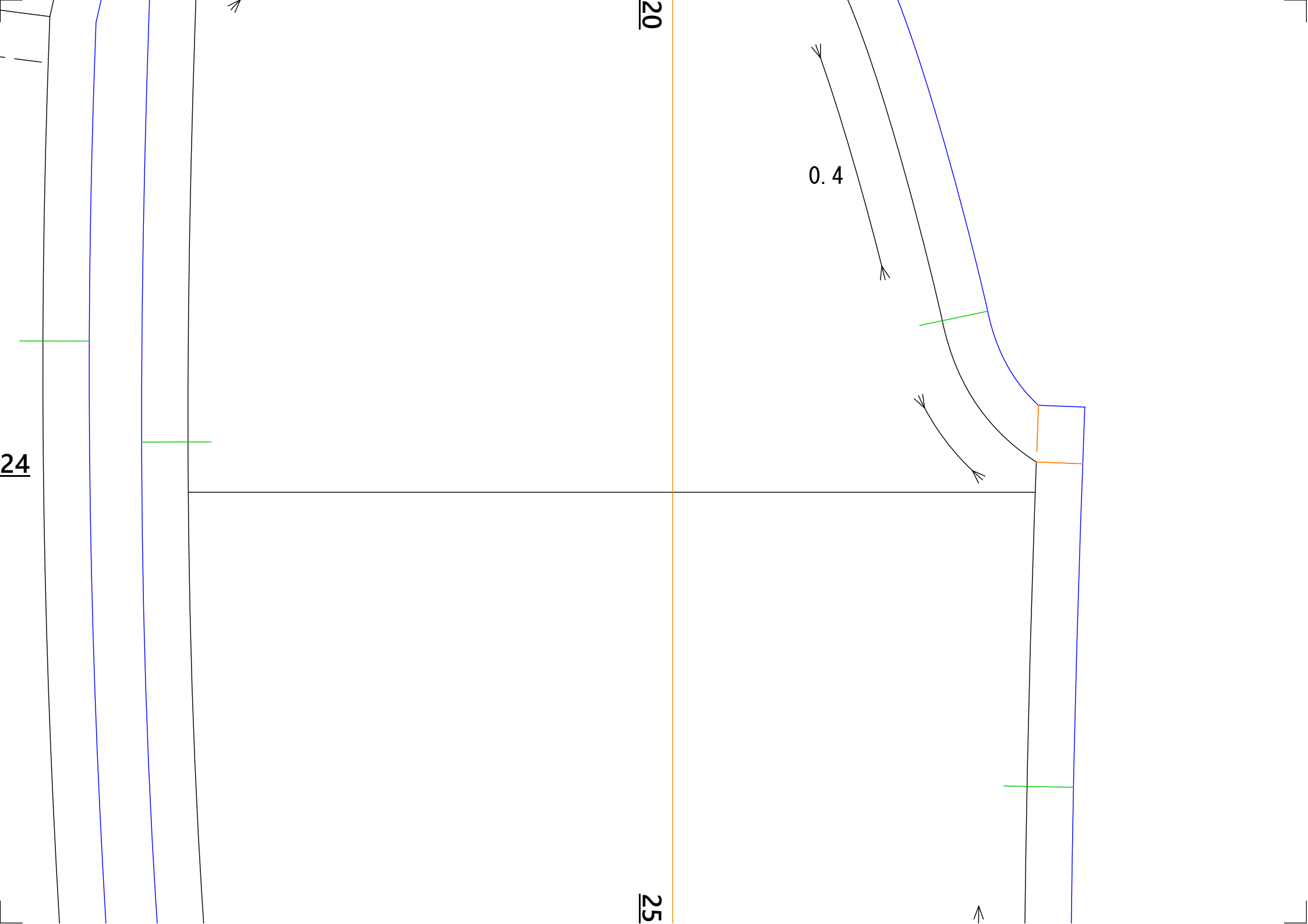
右高 / S. A to right

23

23



24



21

後高/ S. A to back

Jacket-for-women
身返し/ Front facing
表地/ Main fabric x2
芯地/ Interfacing x2

後高/ S. A to back

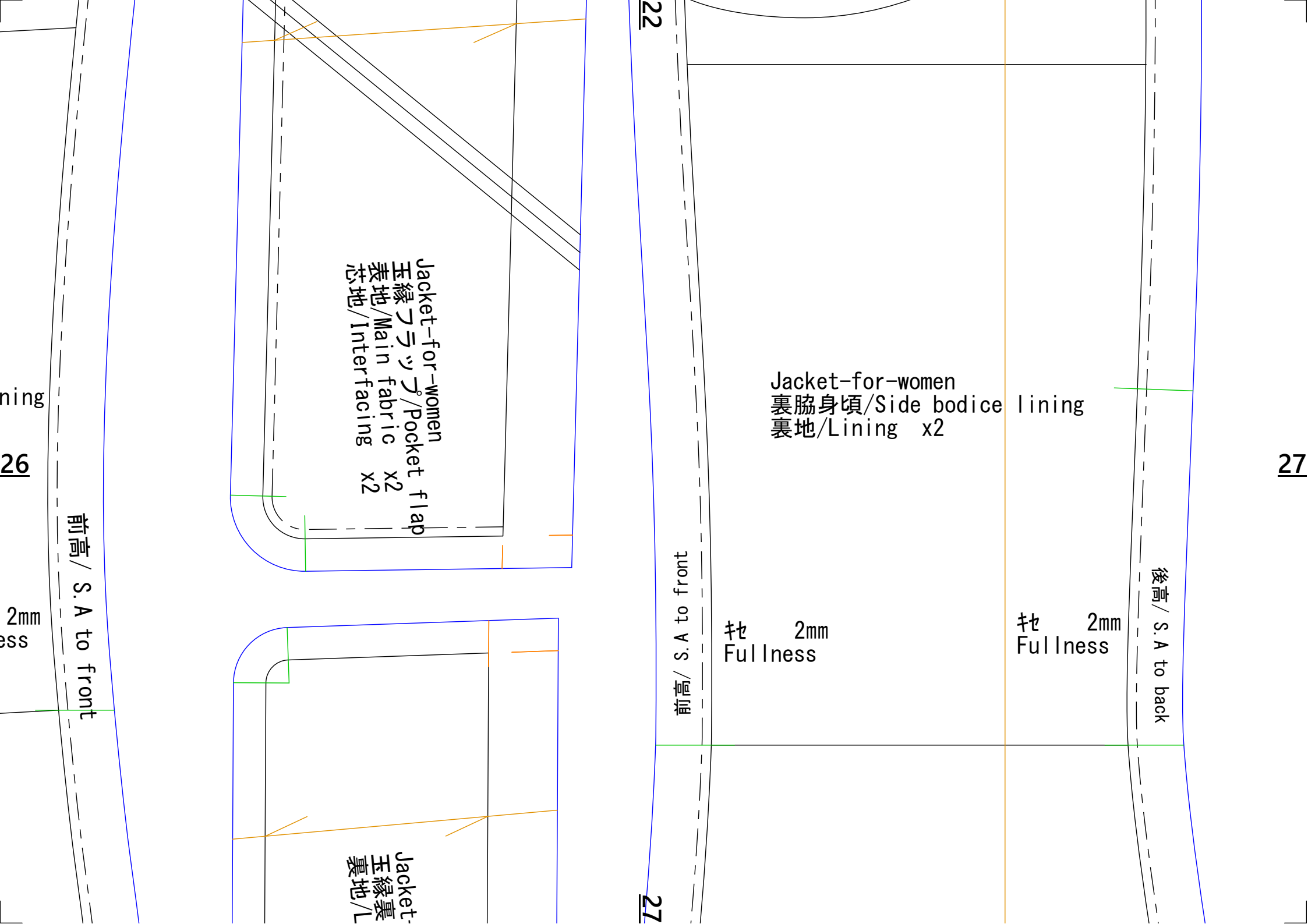
Jacket-for-women
裏前身頃/ Front bodice lining
裏地/ Lining x2

26

ダーツ 後倒し
Dart to back

生地
Full Ine

26



22

27

27

Jacket-for-women
裏脇身頃/Side bodice lining
裏地/Lining x2

Jacket-for-women
玉縁フラップ/Pocket flap
表地/Main fabric x2
芯地/Interfacing

Jacket-
玉縁裏
裏地/L

前高 / S. A to front

衽 2mm
Fullness

衽 2mm
Fullness

後高 / S. A to back

ning

26

2mm
ess

前高 / S. A to front

27

0.3

Jacket-for-women
裏右後身頃/Right back bodice lining
裏地/Lining x1

後高/ S. A to back

拵 2mm
Fullness

23

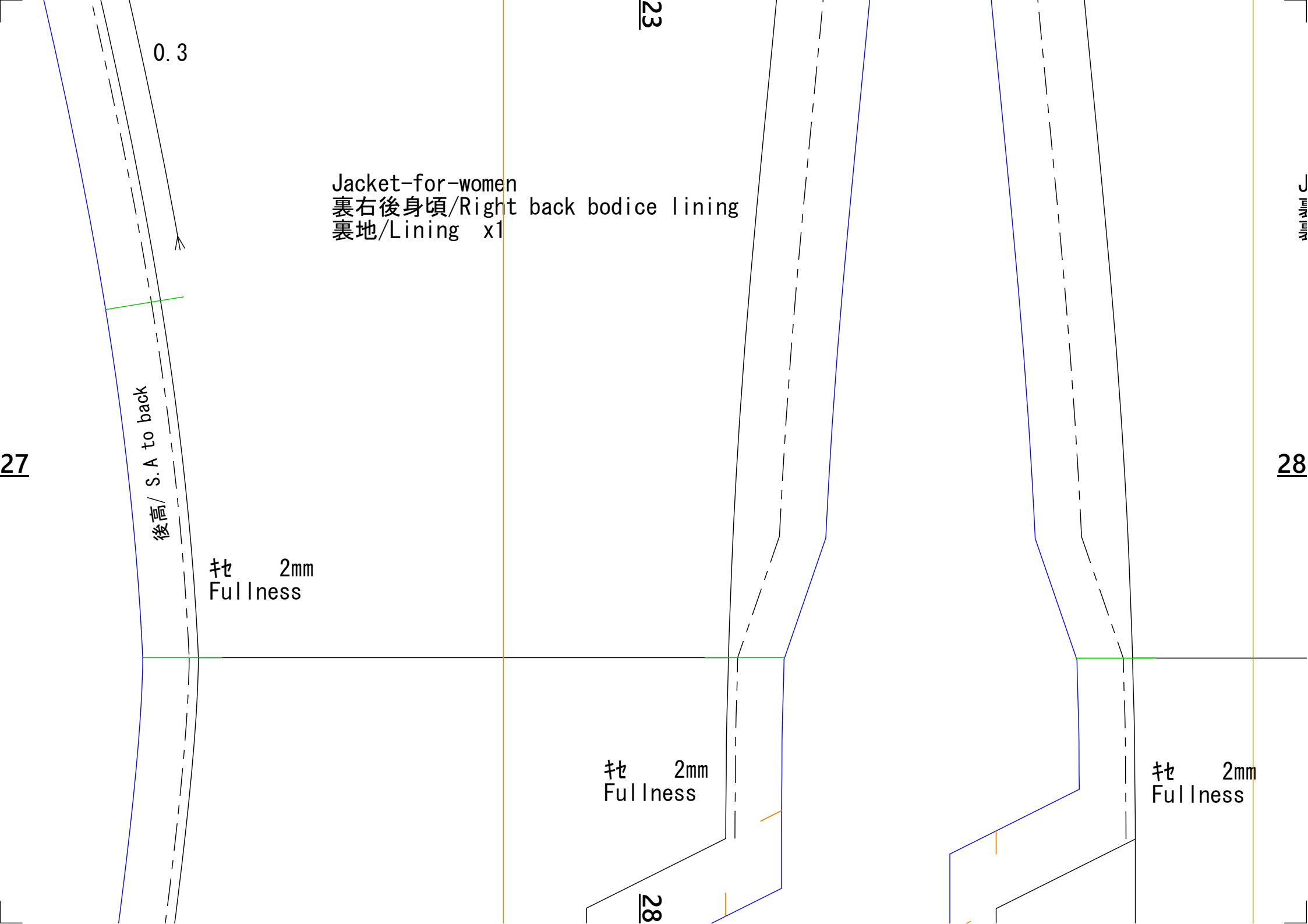
拵 2mm
Fullness

28

拵 2mm
Fullness

28

裏地/Lining x1



Jacket-for-women
裏左後身頃/Left back bodice lining
裏地/Lining x1

0.3

後高 / S. A to back

衽 2mm
Fullness

28

24

29

割り / Seam opening

Jacket-for-women
内袖/Under sleeve
表地/Main fabric x2

29

25

Jacket-for-women
外袖/Top sleeve
表地/Main fabric x2

30

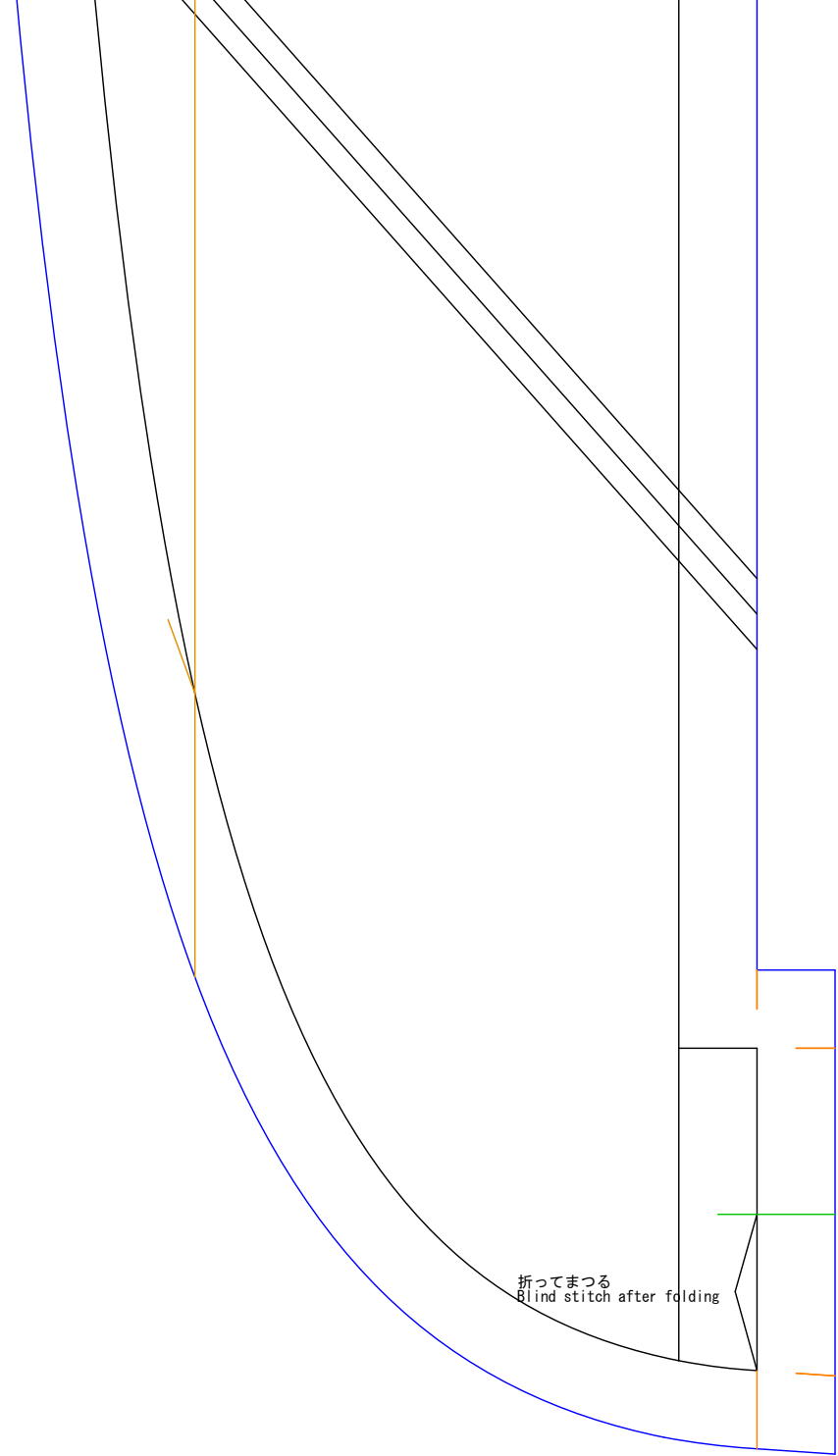
0.5

割り / Seam opening

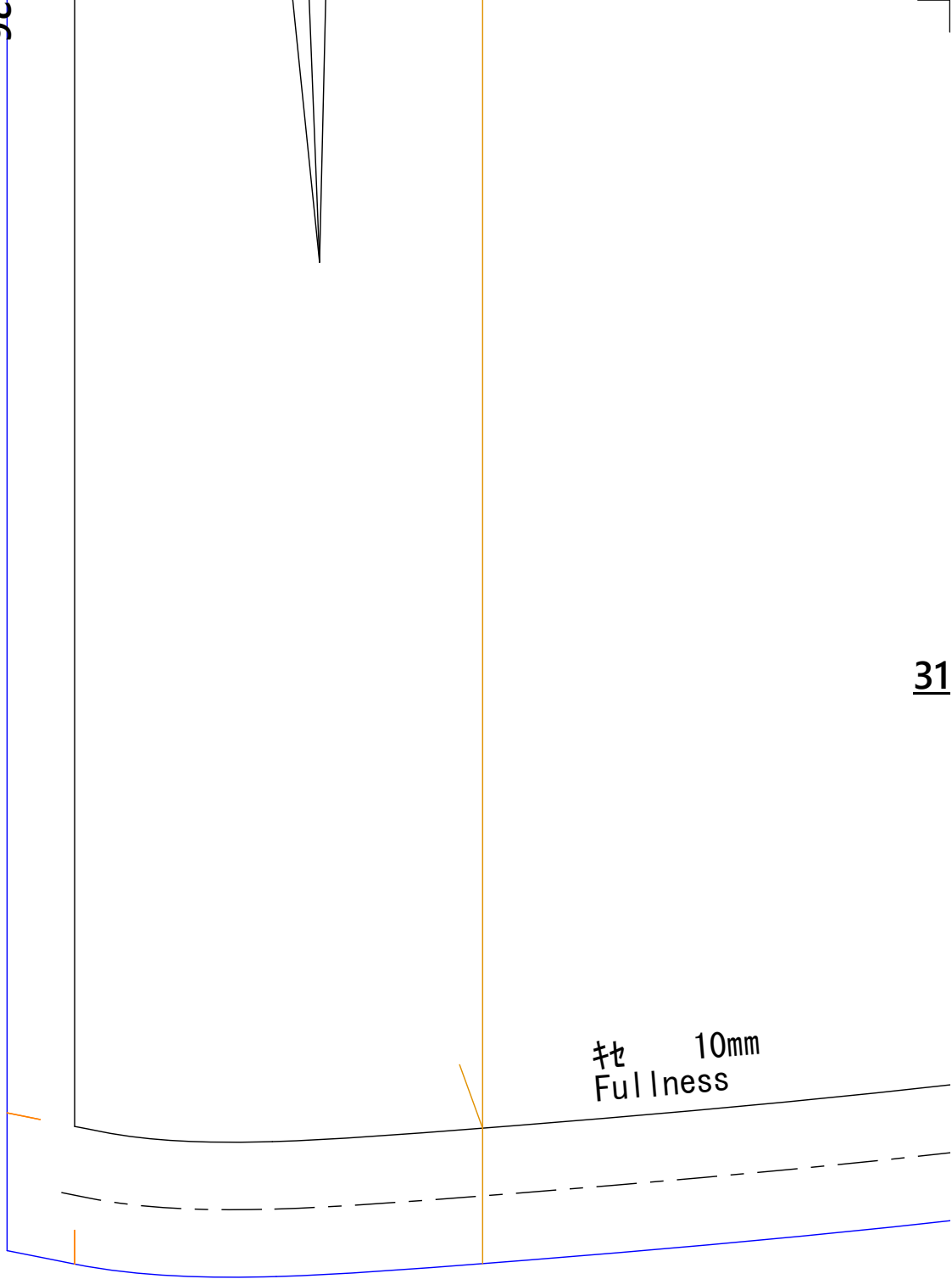
割り / Seam opening

割り / Seam opening

29

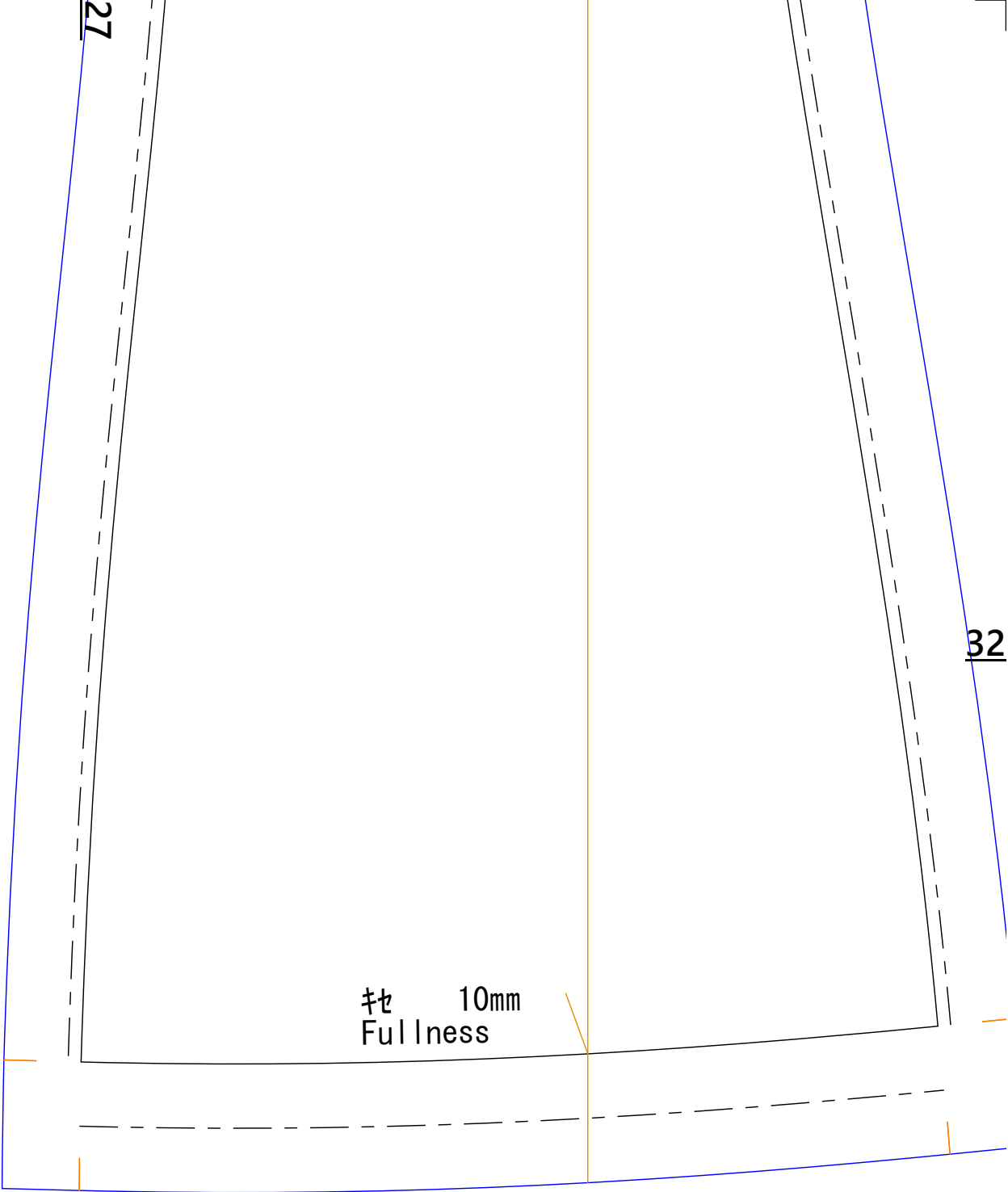


折ってまつる
Blind stitch after folding



きせ 10mm
Fullness

32

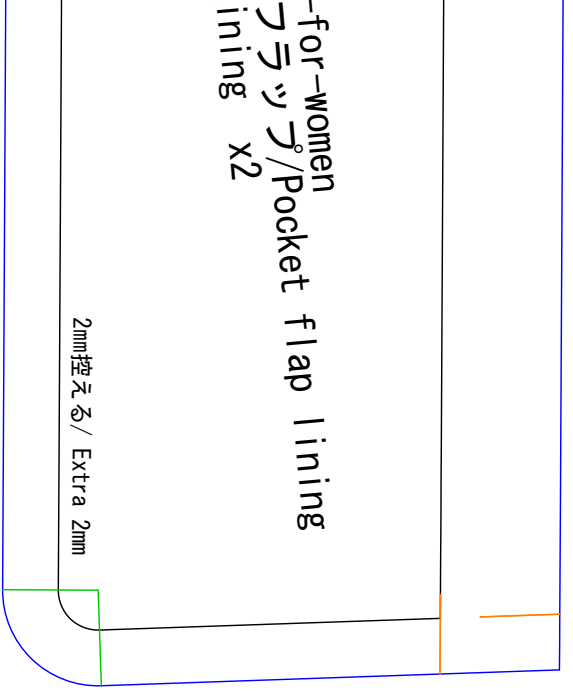


裄 10mm
Fullness

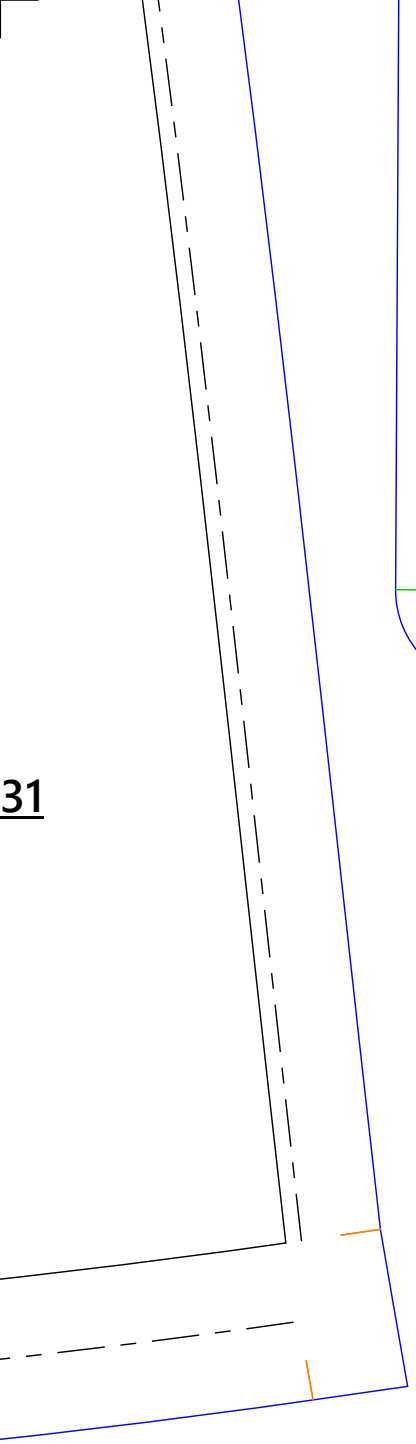
27

-for-women
クラッタ / Pocket flap lining
ining x2

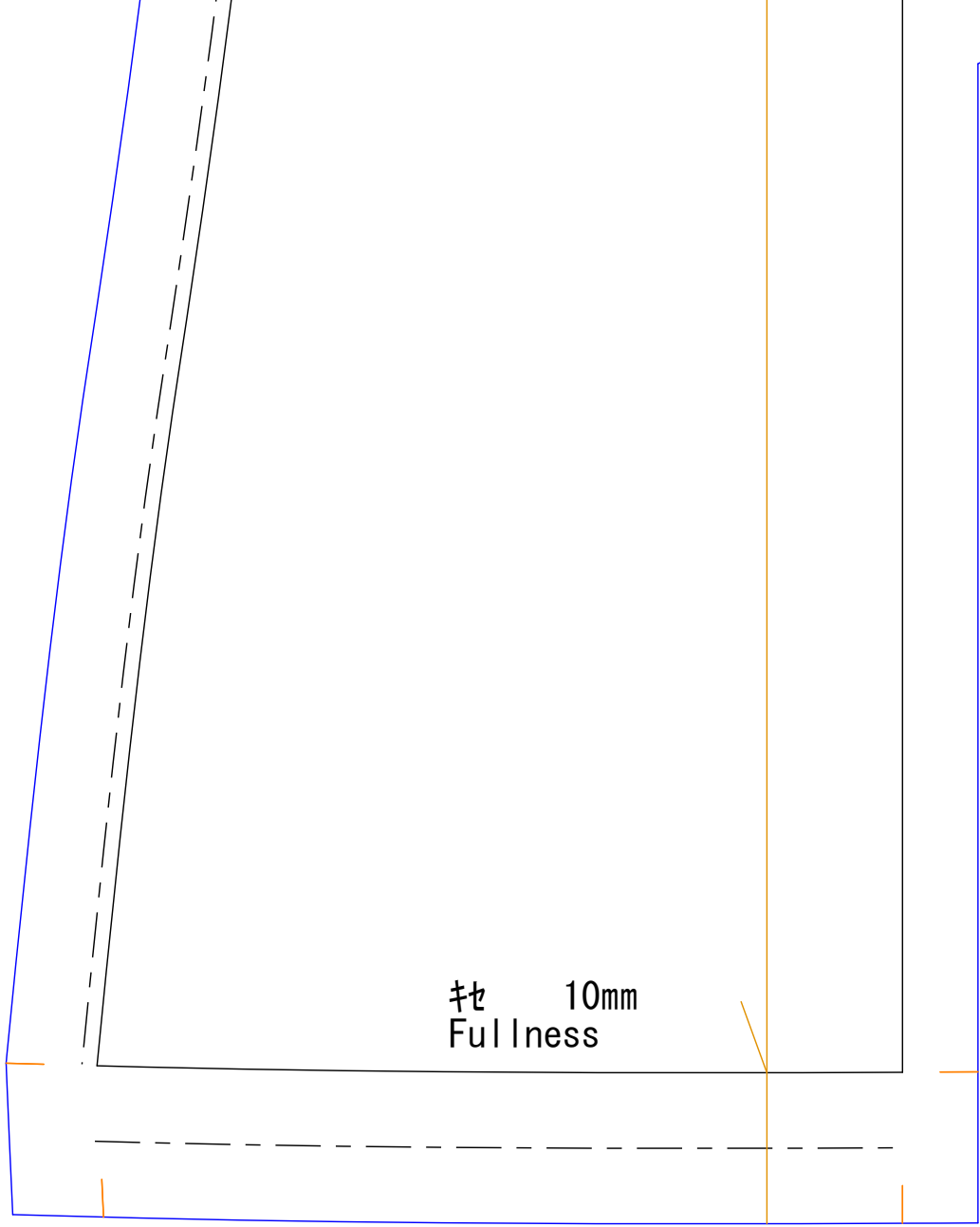
2mm控える / Extra 2mm



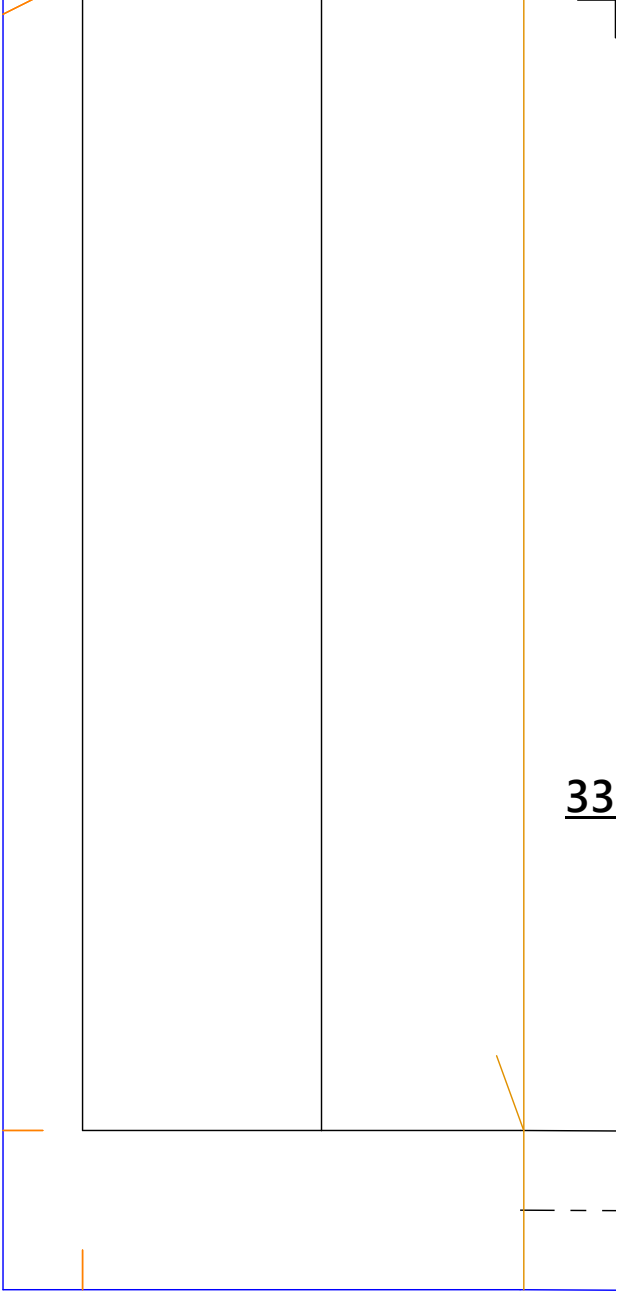
31



32

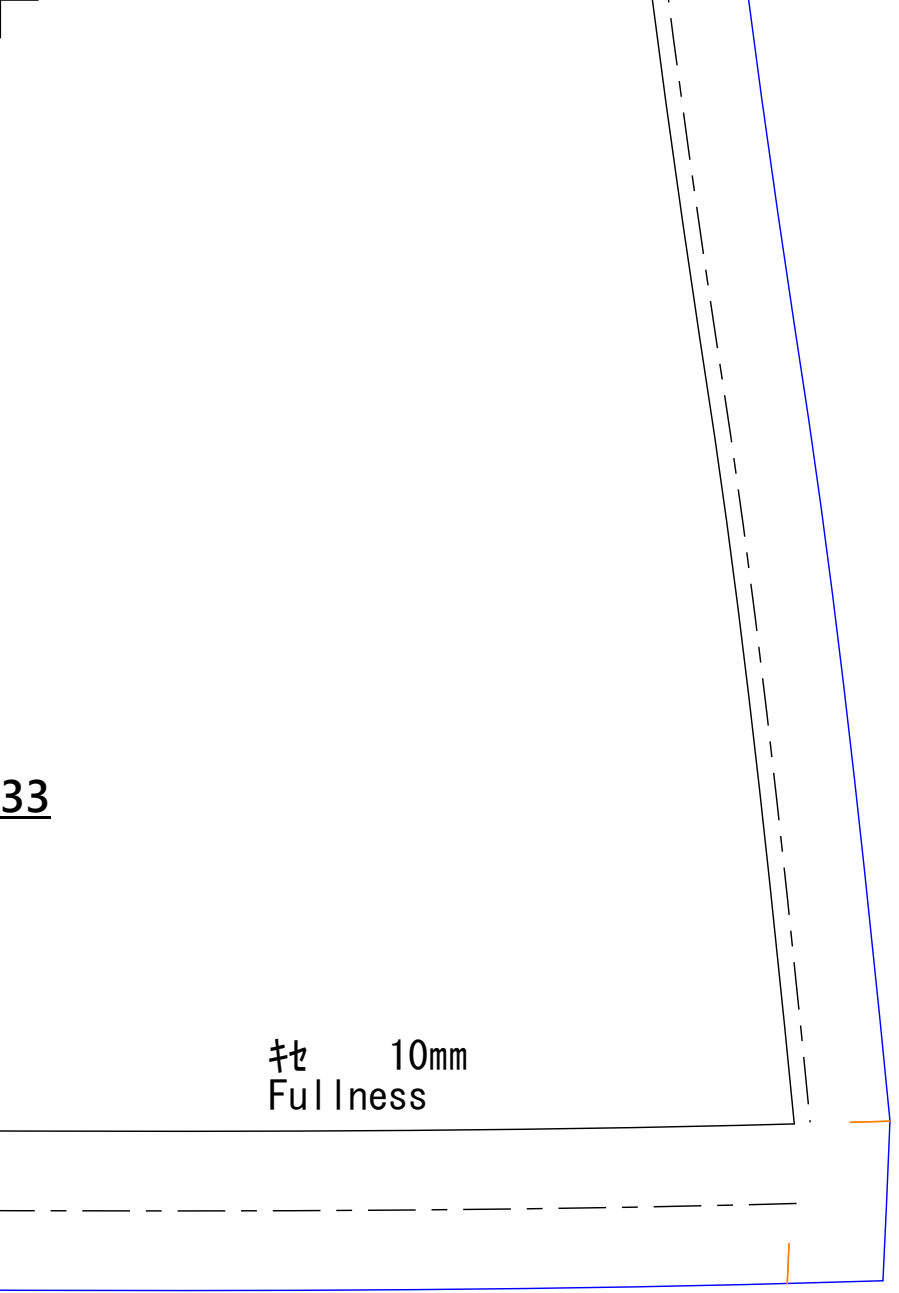


33



33

⌀ 10mm
Fullness

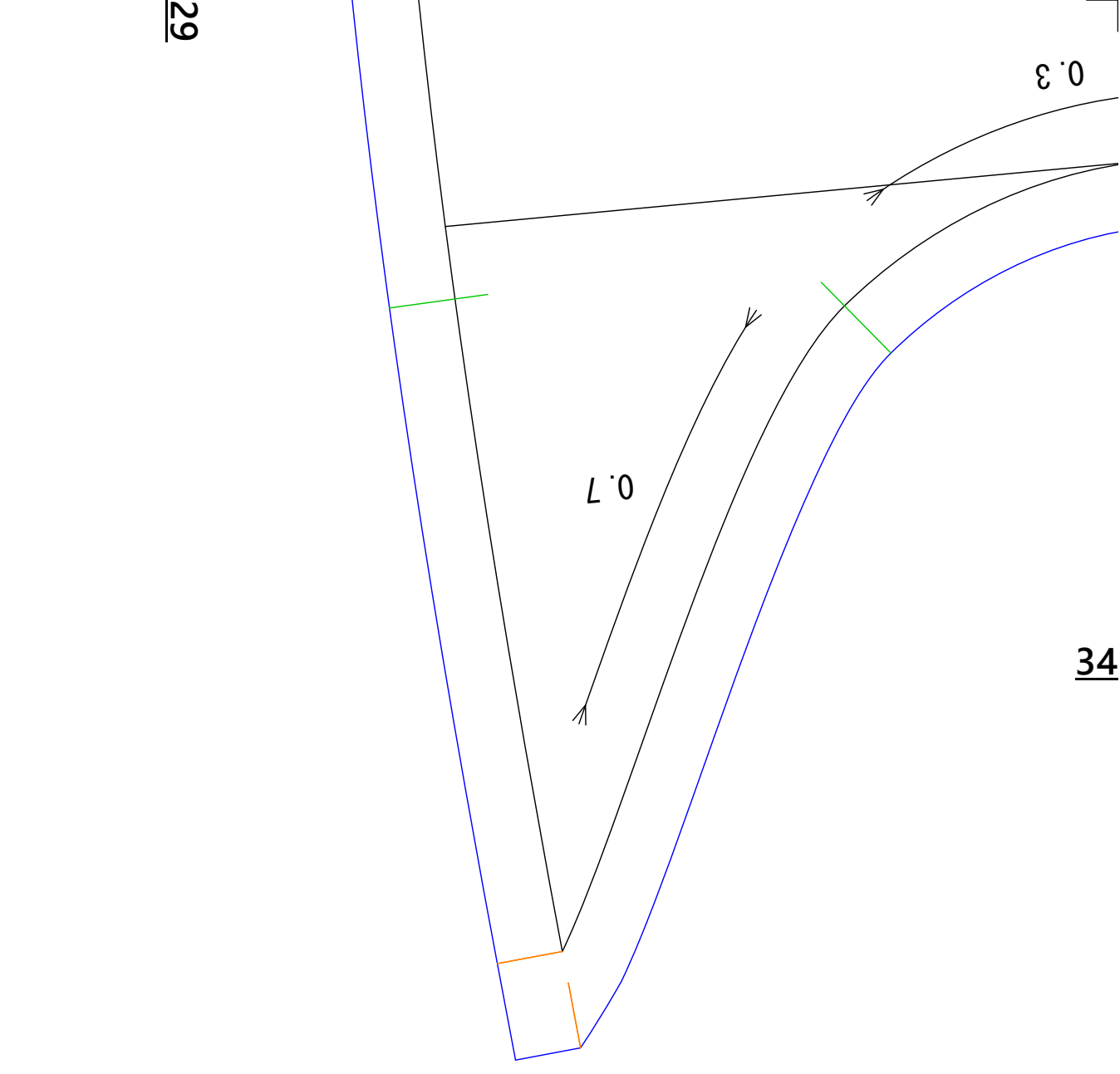


29

0.3

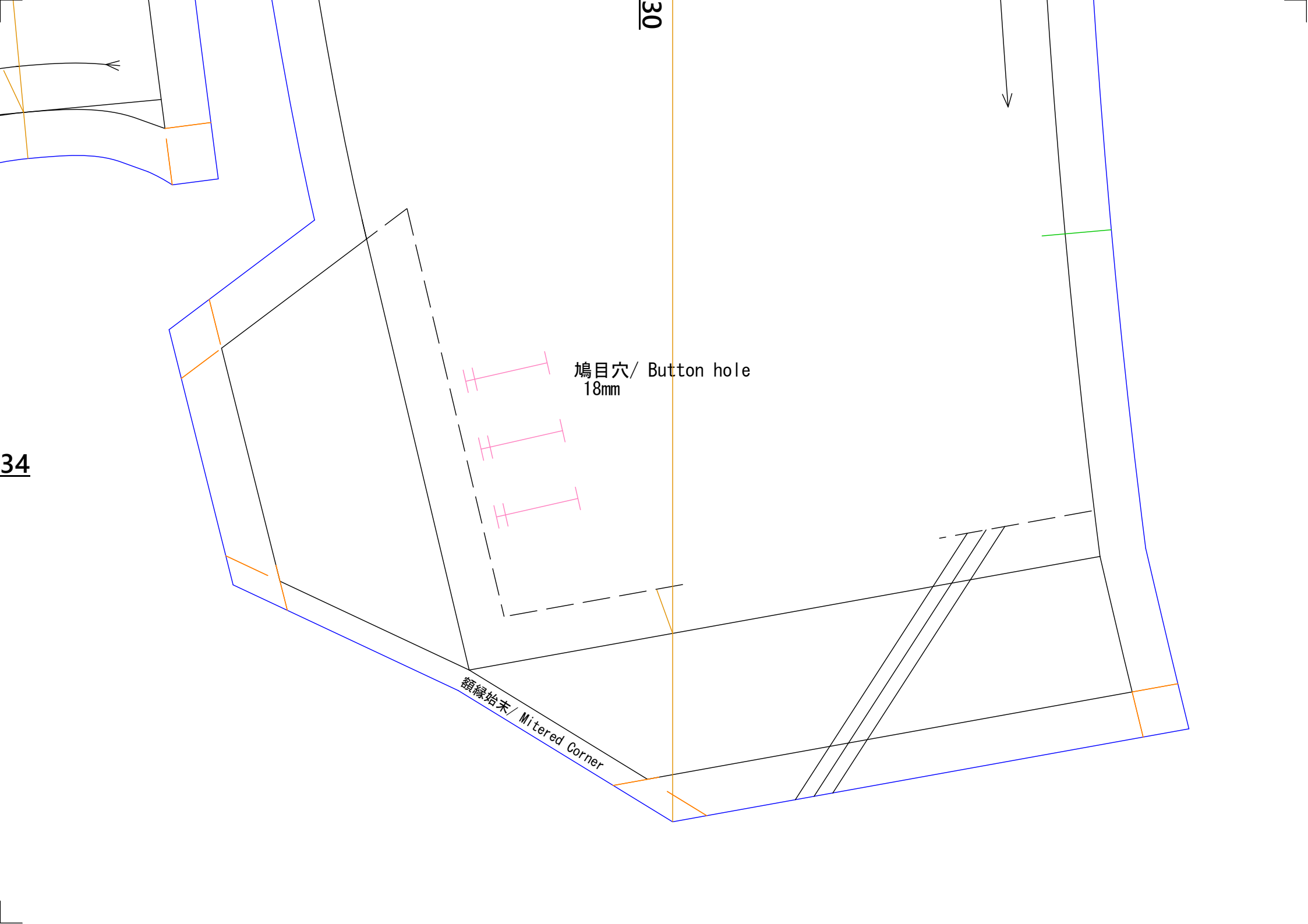
0.7

34



34

30



鳩目穴 / Button hole
18mm

額縁始末 / Mitered Corner